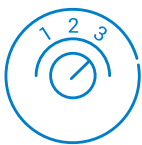


# Chilled Water Fan Coil Units Air Handling Units



# Advantage Range (Low Profile)

IMDL



3 Speed Fan Motor



Easy Clean Plastic Drain



Electric Heating



Opposite Hand

# Advantage Range (IMDL) Specifications



Model	IMDL 40	IMDL 60	IMDL 90	IMDL 130
Nominal Air Flow (l/s) *	200	330	480	650
Fan Type	Forward curved centrifugal double inlet double width			
No. of Fan Scrolls	1	2	2	3
Motor Type	Three speed, direct drive			
Power Source **	1 Phase 230 Volt AC 50 Hz			
No. of Motors	1	1	1	2
Motor Rating (W)	50	75	150	75 + 150
Full Load Amps (A) ***	0.6	0.7	1.4	0.7 + 1.4 (2.1)
Optional Electric Heating (kW)	1.5	2.0	3.0	4.0
Electric Heat Current (A)	6.6	8.8	13.2	17.6
Heat Exchanger Type	Aluminium corrugated plate fins to expanded rifled copper tube			
Cooling/Heating Medium	Chilled Water / Hot Water or Electric Heat			
Finish	Zinc galvanised steel			
Test Pressure	2100 kPa			
Connection Sizes Cooling Coil (mm)	Ø 20 (¾" BSP)	Ø 20 (¾" BSP)	Ø 25 (1" BSP)	Ø 25 (1" BSP)
Connection Sizes Heating Coil (mm)	Ø 15 (½" BSP)			
Air Filter Type	G2 / EU2 Washable			
No. of Air Filters	1	1	1	2
Air Filter Size (mm)	545 x 234 x 13	795 x 234 x 13	1045 x 243 x 13	725 x 243 x 13
Weight Incl. Water (kg)	25	34	46	67
Nett Dry Weight (kg)	24	32	42	62
Shipping Weight (kg)	25	34	45	65

\* with no filters fitted and with a dry coil surface

\*\* Voltage fluctuation limits 200-252V

\*\*\* Fan only, excluding Electric Heating

## Cooling and Heating Coil options:

4 Row Cooling only

3 Row Cooling + 1 Row Heating

4 Row Cooling plus Electric Heating

# IMDL 40H-4

				Low Air flow			Medium Air flow			Nominal Air flow		
4 row chilled water coil				100 L/s			150 L/s			200 L/s		
Air on DB/WB	W. flow L/s	P.D. kPa	Cooling kW	Entering water temp			Entering water temp			Entering water temp		
				6	7	8	6	7	8	6	7	8
23/17	0.15	6.7	total	2.6	2.4	2.2	3.6	3.3	3.0	3.9	3.6	3.3
			sensible	1.6	1.5	1.4	2.3	2.2	2.1	2.6	2.5	2.4
	0.25	16.7	total	2.9	2.6	2.4	4.1	3.8	3.5	4.6	4.2	3.9
			sensible	1.7	1.6	1.5	2.6	2.4	2.3	2.9	2.7	2.6
	0.35	30.5	total	3.0	2.7	2.5	4.4	4.1	3.7	4.9	4.6	4.2
			sensible	1.8	1.7	1.6	2.7	2.5	2.4	3.0	2.9	2.7
27/19	0.15	6.7	total	3.3	3.1	2.9	4.1	3.8	3.5	4.7	4.4	4.1
			sensible	2.0	1.9	1.8	2.6	2.5	2.4	3.2	3.1	2.9
	0.25	16.7	total	3.5	3.3	3.1	4.6	4.3	4.0	5.6	5.2	4.8
			sensible	2.1	2.0	1.9	2.9	2.7	2.6	3.5	3.4	3.2
	0.35	30.5	total	3.6	3.4	3.2	4.9	4.5	4.2	6.0	5.6	5.2
			sensible	2.2	2.1	2.0	3.0	2.8	2.7	3.7	3.5	3.4

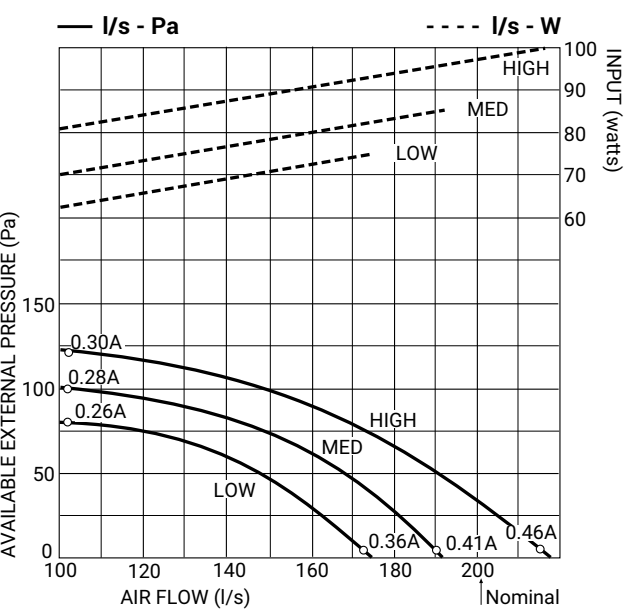
# IMDL 40H-3/1

3 row chilled water coil				100 L/s			150 L/s			200 L/s		
Air on DB/WB	W. flow L/s	P.D. kPa	Cooling kW	Entering water temp			Entering water temp			Entering water temp		
				6	7	8	6	7	8	6	7	8
23/17	0.1	5.4	total	2.1	2.0	1.8	2.5	2.3	2.1	2.8	2.5	2.3
			sensible	1.4	1.4	1.3	1.8	1.7	1.6	2.1	2.0	1.9
	0.2	18.8	total	2.5	2.3	2.1	3.1	2.9	2.6	3.6	3.3	3.0
			sensible	1.6	1.5	1.4	2.0	1.9	1.8	2.5	2.3	2.2
	0.25	27.9	total	2.6	2.4	2.1	3.3	3.0	2.7	3.8	3.5	3.2
			sensible	1.6	1.5	1.4	2.1	2.0	1.9	2.5	2.4	2.3
27/19	0.1	5.4	total	2.6	2.4	2.2	3.0	2.8	2.6	3.4	3.1	2.9
			sensible	1.8	1.7	1.6	2.2	2.1	2.0	2.7	2.6	2.5
	0.2	18.8	total	3.1	2.8	2.6	3.7	3.5	3.2	4.4	4.1	3.8
			sensible	2.0	1.9	1.8	2.5	2.4	2.3	3.1	2.9	2.8
	0.25	27.9	total	3.1	2.9	2.7	4.0	3.8	3.5	4.7	4.3	4.0
			sensible	2.0	1.9	1.8	2.6	2.5	2.4	3.1	3.0	2.9
1 row hot water coil												
Air on DB	W. flow L/s	P.D. kPa	Heating kW	Entering water temp			Entering water temp			Entering water temp		
				50	65	80	50	65	80	50	65	80
15	0.04	6.4	heat	1.8	2.6	3.4	2.1	3.0	3.9	2.3	3.4	4.4
	0.07	17.4	heat	2.0	2.9	3.8	2.4	3.5	4.5	2.7	3.9	5.0
	0.1	33	heat	2.1	3.1	4.0	2.6	3.7	4.8	2.9	4.1	5.4
21	0.04	6.4	heat	1.5	2.3	3.0	1.8	2.6	3.5	2.0	3.0	4.0
	0.07	17.4	heat	1.7	2.6	3.4	2.0	3.0	4.0	2.3	3.5	4.6
	0.1	33	heat	1.8	2.7	3.7	2.1	3.2	4.3	2.4	3.7	5.0

# Performance Data

# IMDL 40H

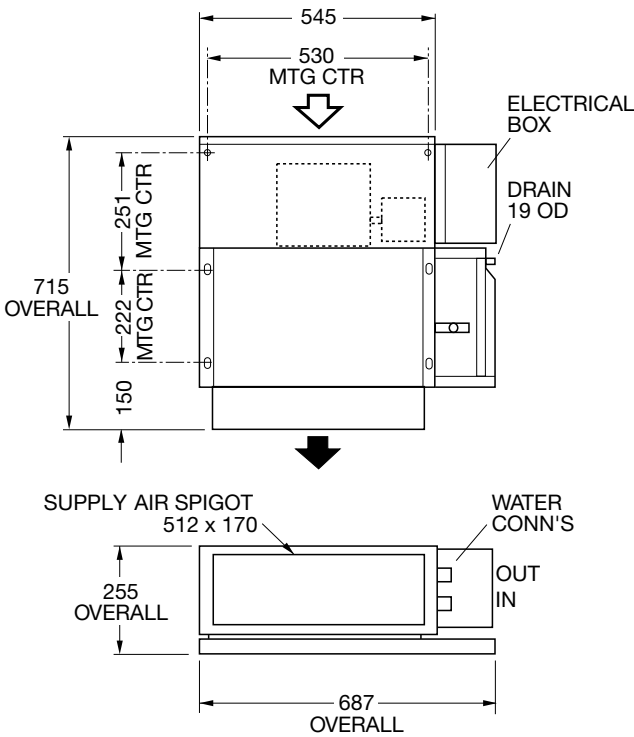
## Air Handling



**Note:**

- 1. Airflows given are for a standard unit with rectangular air spigot and no filter installed.
- 2. Airflows are for dry coil. Reduce airflow by 10% in high moisture removal conditions.
- 3. In a free blow application, beware of exceeding indoor fan motor's full load amp limit.
- 4. Refer to page 70 for filter pressure drop.

## Dimensions



## Sound Levels

### Supply Air Outlet

Fan Speed	Sound Pressure Levels (SPL) (dB)						
	dB(A)	Octave Band Centre Frequency (Hz)					
		125	250	500	1K	2K	4K
Low	40	51	45	35	26	20	13
Med	42	52	48	38	29	23	17
High	45	57	50	40	31	25	19

### Return Air Inlet + Case Breakout

	Sound Pressure Levels (SPL) (dB)						
	dB(A)	Octave Band Centre Frequency (Hz)					
		125	250	500	1K	2K	4K
	49	55	51	47	43	38	30
	51	54	54	50	46	41	34
	54	59	57	52	49	44	37

Sound levels are specified as in-situ conditions. For more information and adjustment factors for your specific installation please find supplementary booklets under the relevant units on our website [www.temperzone.com](http://www.temperzone.com)



# IMDL 60H-4

				Low Air flow			Medium Air flow			Nominal Air flow		
4 row chilled water coil				250 L/s			300 L/s			330 L/s		
Air on DB/WB	W. flow L/s	P.D. kPa	Cooling kW	Entering water temp			Entering water temp			Entering water temp		
				6	7	8	6	7	8	6	7	8
23/17	0.15	8.5	total	4.9	4.5	4.1	5.2	4.8	4.4	5.4	5.0	4.6
			sensible	3.3	3.1	3.0	3.6	3.5	3.3	3.9	3.7	3.5
	0.22	17.1	total	5.6	5.2	4.7	6.1	5.6	5.1	6.4	5.9	5.4
			sensible	3.6	3.4	3.2	4.0	3.8	3.6	4.2	4.0	3.8
	0.3	29.4	total	6.1	5.6	5.1	6.7	6.2	5.7	7.1	6.6	6.0
			sensible	3.8	3.6	3.4	4.2	4.0	3.8	4.5	4.3	4.1
27/19	0.15	8.5	total	6.0	5.6	5.2	6.4	6.0	5.6	6.6	6.2	5.7
			sensible	4.1	3.9	3.8	4.5	4.4	4.2	4.8	4.6	4.4
	0.22	17.1	total	6.9	6.4	6.0	7.5	7.0	6.5	7.8	7.3	6.8
			sensible	4.4	4.2	4.1	4.9	4.8	4.6	5.2	5.0	4.8
	0.3	29.4	total	7.5	7.0	6.5	8.3	7.7	7.2	8.7	8.1	7.5
			sensible	4.7	4.5	4.3	5.2	5.0	4.8	5.6	5.3	5.1

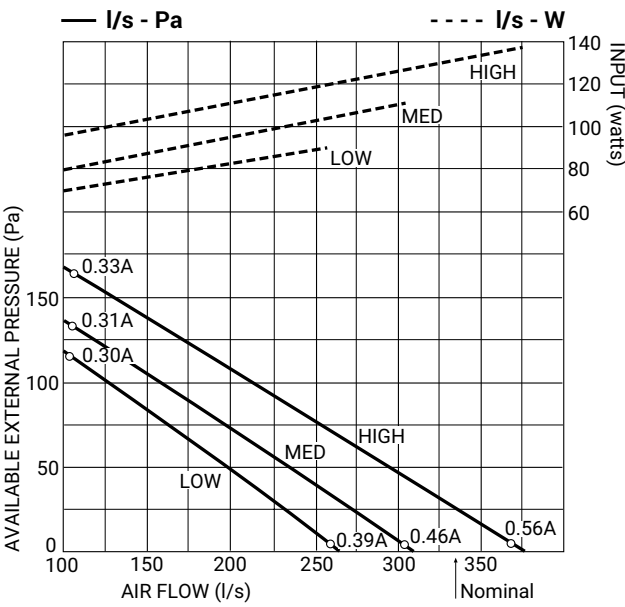
# IMDL 60H-3/1

3 row chilled water coil				250 L/s			300 L/s			330 L/s		
Air on DB/WB	W. flow L/s	P.D. kPa	Cooling kW	Entering water temp			Entering water temp			Entering water temp		
				6	7	8	6	7	8	6	7	8
23/17	0.11	8.2	total	3.7	3.4	3.1	3.9	3.6	3.2	4.0	3.7	3.3
			sensible	2.8	2.7	2.6	3.1	3.0	2.9	3.3	3.2	3.1
	0.17	18.1	total	4.5	4.0	3.7	4.8	4.4	4.0	5.0	4.6	4.1
			sensible	3.1	3.0	2.8	3.4	3.3	3.1	3.7	3.5	3.3
	0.23	30.6	total	4.9	4.5	4.1	5.3	4.9	4.4	5.6	5.1	4.6
			sensible	3.3	3.1	3.0	3.7	3.5	3.3	3.9	3.7	3.5
27/19	0.11	8.2	total	4.5	4.2	3.9	4.7	4.4	4.0	4.8	4.5	4.1
			sensible	3.5	3.4	3.3	3.9	3.8	3.6	4.1	4.0	3.9
	0.17	18.1	total	5.4	5.0	4.6	5.8	5.4	5.0	6.0	5.5	5.1
			sensible	3.9	3.7	3.6	4.3	4.1	4.0	4.5	4.4	4.2
	0.23	30.6	total	6.0	5.5	5.1	6.5	6.0	5.5	6.7	6.3	5.8
			sensible	4.1	3.9	3.8	4.5	4.4	4.2	4.8	4.6	4.4
1 row hot water coil												
Air on DB	W. flow L/s	P.D. kPa	Heating kW	Entering water temp			Entering water temp			Entering water temp		
				50	65	80	50	65	80	50	65	80
15	0.04	8.1	heat	3.0	4.3	5.5	3.2	4.6	6.0	3.3	4.7	6.2
	0.06	16.8	heat	3.4	4.9	6.4	3.6	5.2	6.8	3.8	5.4	7.0
	0.08	28.1	heat	3.7	5.3	6.9	3.9	5.7	7.3	4.1	5.8	7.6
21	0.04	8.1	heat	2.5	3.8	5.1	2.7	4.1	5.4	2.8	4.2	5.7
	0.06	16.8	heat	2.8	4.3	5.8	3.0	4.6	6.2	3.2	4.8	6.4
	0.08	28.1	heat	3.1	4.6	6.2	3.3	5.0	6.7	3.4	5.2	6.9

# Performance Data

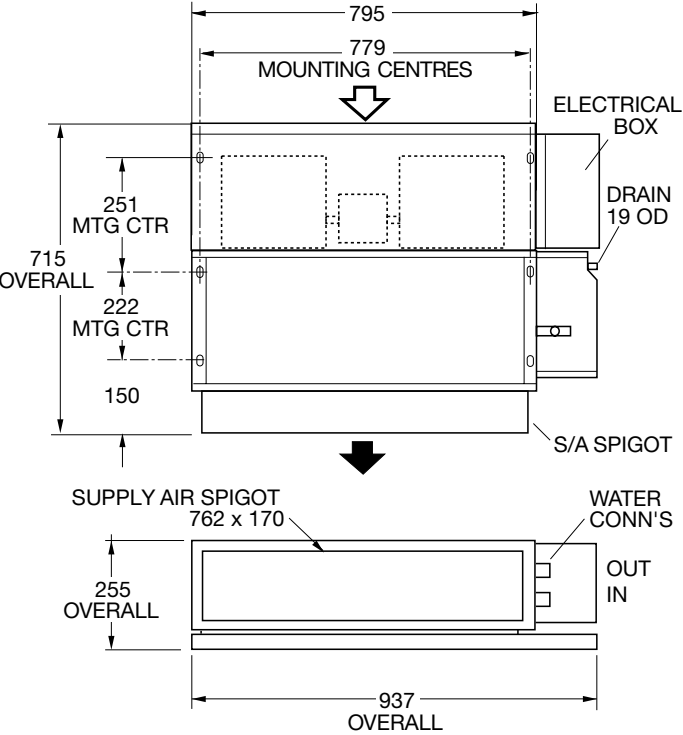
# IMDL 60H

## Air Handling



- Note:**
- 1. Airflows given are for a standard unit with rectangular air spigot and no filter installed.
  - 2. Airflows are for dry coil. Reduce airflow by 10% in high moisture removal conditions.
  - 3. In a free blow application, beware of exceeding indoor fan motor's full load amp limit.
  - 4. Refer to page 70 for filter pressure drop.

## Dimensions



## Sound Levels

### Supply Air Outlet

Fan Speed	Sound Pressure Levels (SPL) (dB)						
	dB(A)	Octave Band Centre Frequency (Hz)					
		125	250	500	1K	2K	4K
Low	43	50	48	42	31	25	16
Med	44	51	49	43	33	28	19
High	47	55	52	45	37	31	24

### Return Air Inlet + Case Breakout

	Sound Pressure Levels (SPL) (dB)						
	dB(A)	Octave Band Centre Frequency (Hz)					
		125	250	500	1K	2K	4K
	47	51	49	46	42	37	29
	50	52	52	49	45	41	33
	53	55	54	52	48	44	37

Sound levels are specified as in-situ conditions. For more information and adjustment factors for your specific installation please find supplementary booklets under the relevant units on our website [www.temperzone.com](http://www.temperzone.com)

# IMDL 90H-4

				Low Air flow			Medium Air flow			Nominal Air flow		
4 row chilled water coil				290 L/s			350 L/s			480 L/s		
Air on DB/WB	W. flow L/s	P.D. kPa	Cooling kW	Entering water temp			Entering water temp			Entering water temp		
				6	7	8	6	7	8	6	7	8
23/17	0.3	8.2	total	6.5	6.0	5.5	7.2	6.7	6.0	8.4	7.7	7.4
			sensible	4.6	4.3	4.1	5.2	5.0	4.7	6.4	6.1	6.0
	0.45	16.7	total	7.1	6.5	5.9	8.0	7.3	6.7	9.5	8.8	8.0
			sensible	4.8	4.6	4.3	5.5	5.2	5.0	6.9	6.6	6.2
	0.6	28.5	total	7.5	6.9	6.3	8.5	7.8	7.1	10.4	9.5	8.7
			sensible	5.0	4.7	4.4	5.8	5.4	5.1	7.2	6.9	6.5
27/19	0.3	8.2	total	8.0	7.4	6.9	8.8	8.2	7.6	10.2	9.5	8.8
			sensible	5.6	5.4	5.2	6.4	6.1	5.9	7.9	7.6	7.3
	0.45	16.7	total	8.7	8.1	7.5	9.8	9.1	8.5	11.7	10.9	10.1
			sensible	5.9	5.7	5.4	6.8	6.5	6.3	8.5	8.2	7.8
	0.6	28.5	total	9.1	8.5	7.9	10.4	9.7	9.0	12.7	11.8	10.9
			sensible	6.1	5.9	5.6	7.1	6.8	6.5	8.9	8.5	8.2

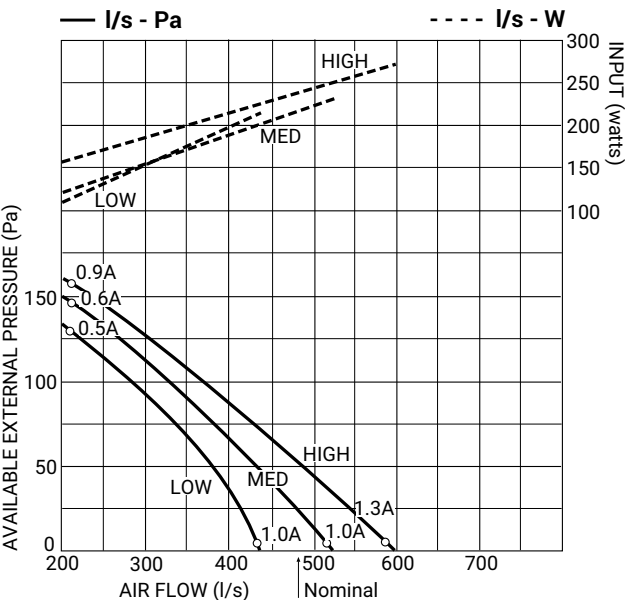
# IMDL 90H-3/1

3 row chilled water coil				290 L/s			350 L/s			480 L/s		
Air on DB/WB	W. flow L/s	P.D. kPa	Cooling kW	Entering water temp			Entering water temp			Entering water temp		
				6	7	8	6	7	8	6	7	8
23/17	0.25	9.9	total	5.6	5.1	4.7	6.1	5.6	5.1	7.0	6.4	5.9
			sensible	4.0	3.8	3.6	4.5	4.3	4.1	5.5	5.3	5.1
	0.35	18.1	total	6.1	5.6	5.1	6.8	6.3	5.6	7.9	7.3	6.6
			sensible	4.2	4.0	3.8	4.8	4.6	4.3	5.9	5.6	5.4
	0.45	28.1	total	6.5	5.9	5.4	7.3	6.7	6.0	8.6	7.9	7.2
			sensible	4.4	4.2	3.9	5.0	4.8	4.5	6.2	5.9	5.6
27/19	0.25	9.9	total	6.8	6.4	5.9	7.5	7.0	6.4	8.5	7.9	7.3
			sensible	4.9	4.8	4.6	5.6	5.4	5.2	6.8	6.6	6.4
	0.35	18.1	total	7.5	7.0	6.5	8.3	7.8	7.2	9.7	9.0	8.4
			sensible	5.2	5.0	4.8	5.9	5.7	5.5	7.3	7.0	6.8
	0.45	28.5	total	8.0	7.4	6.9	8.9	8.3	7.7	10.6	9.8	9.1
			sensible	5.4	5.2	5.0	6.2	5.9	5.7	7.6	7.3	7.0
1 row hot water coil												
Air on DB	W. flow L/s	P.D. kPa	Heating kW	Entering water temp			Entering water temp			Entering water temp		
				50	65	80	50	65	80	50	65	80
15	0.1	10.3	heat	5.2	7.5	9.8	5.8	8.2	10.7	6.6	9.4	12.3
	0.14	18.8	heat	5.6	8.0	10.5	6.2	8.8	11.5	7.3	10.4	13.5
	0.18	29.4	heat	5.9	8.4	11.0	6.5	9.3	12.2	7.8	11.1	14.4
21	0.1	10.3	heat	4.4	6.6	8.9	4.8	7.3	9.7	5.5	8.3	11.2
	0.14	18.8	heat	4.7	7.1	9.5	5.1	7.8	10.4	6.0	9.2	12.3
	0.18	29.4	heat	4.9	7.4	10.0	5.4	8.2	11.0	6.4	9.7	13.1



# Performance Data

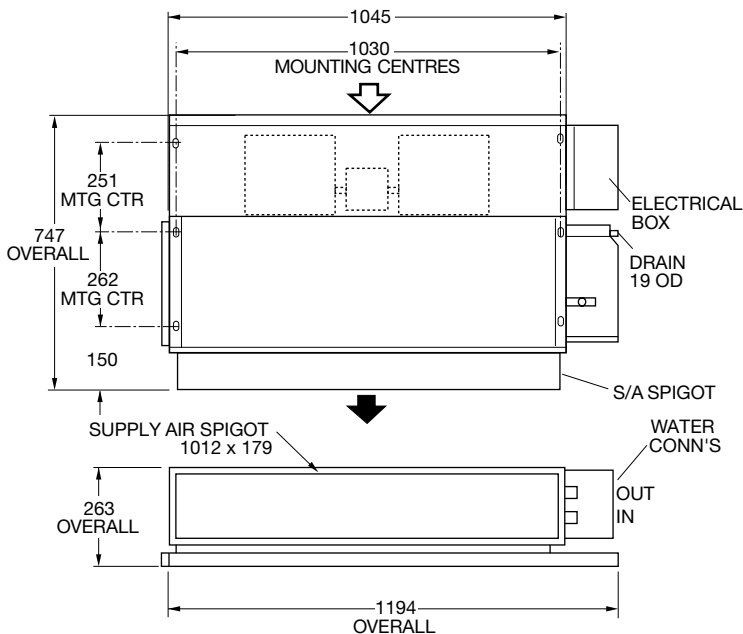
## Air Handling



**Note:**

1. Airflows given are for a standard unit with rectangular air spigot and no filter installed.
2. Airflows are for dry coil. Reduce airflow by 10% in high moisture removal conditions.
3. In a free blow application, beware of exceeding indoor fan motor's full load amp limit.
4. Refer to page 70 for filter pressure drop.

## Dimensions



## Sound Levels

### Supply Air Outlet

Fan Speed	Sound Pressure Levels (SPL) (dB)						
	dB(A)	Octave Band Centre Frequency (Hz)					
		125	250	500	1K	2K	4K
Low	44	53	48	42	35	30	22
Med	47	55	51	44	38	32	26
High	49	57	53	47	41	35	30

### Return Air Inlet + Case Breakout

	Sound Pressure Levels (SPL) (dB)						
	dB(A)	Octave Band Centre Frequency (Hz)					
		125	250	500	1K	2K	4K
	52	58	54	50	46	44	37
	55	60	56	53	49	46	40
	56	58	56	55	50	47	43

Sound levels are specified as in-situ conditions. For more information and adjustment factors for your specific installation please find supplementary booklets under the relevant units on our website [www.temperzone.com](http://www.temperzone.com)

# IMDL 130H-4

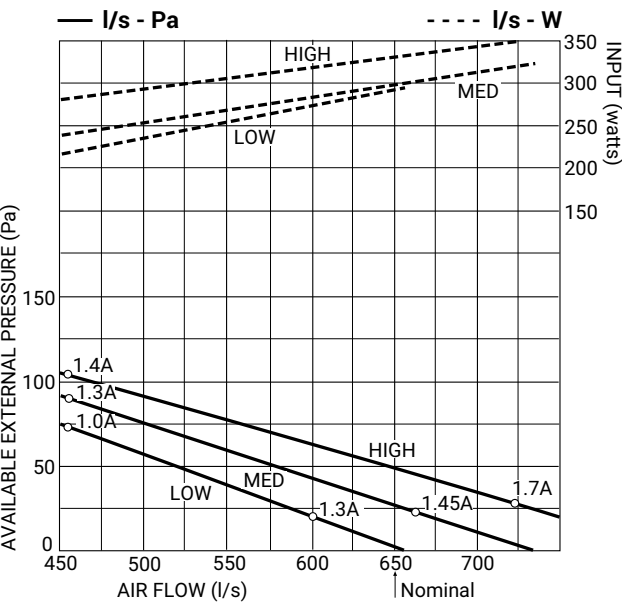
				Low Air flow			Medium Air flow			Nominal Air flow		
4 row chilled water coil				400 L/s			525 L/s			650 L/s		
Air on DB/WB	W. flow L/s	P.D. kPa	Cooling kW	Entering water temp			Entering water temp			Entering water temp		
				6	7	8	6	7	8	6	7	8
23/17	0.3	10.5	total	8.5	7.9	7.2	9.7	8.9	8.2	10.6	9.7	8.9
			sensible	6.1	5.8	5.5	7.3	7.0	6.7	8.3	8.0	7.6
	0.45	21.8	total	9.5	8.7	7.9	11.1	10.2	9.3	12.4	11.3	10.3
			sensible	6.5	6.1	5.8	7.9	7.5	7.1	9.1	8.6	8.2
	0.6	36.7	total	10.1	9.3	8.4	12.0	11.0	10.0	13.5	12.4	11.3
			sensible	6.8	6.4	6.0	8.3	7.8	7.4	9.6	9.1	8.6
27/19	0.3	10.5	total	10.5	9.8	9.1	11.9	11.0	10.3	12.9	12.0	11.1
			sensible	7.5	7.2	6.9	9.0	8.7	8.4	10.4	10.0	9.7
	0.45	21.8	total	11.7	10.9	10.1	13.6	12.7	11.8	15.2	14.1	13.1
			sensible	8.0	7.7	7.4	9.8	9.4	9.0	11.3	10.9	10.4
	0.6	36.7	total	12.4	11.6	10.7	14.7	13.7	12.7	16.6	15.5	14.3
			sensible	8.4	8.0	7.7	10.2	9.8	9.4	11.9	11.4	10.9

# IMDL 130H-3/1

3 row chilled water coil				400 L/s			525 L/s			650 L/s		
Air on DB/WB	W. flow L/s	P.D. kPa	Cooling kW	Entering water temp			Entering water temp			Entering water temp		
				6	7	8	6	7	8	6	7	8
23/17	0.2	8.5	total	6.7	6.2	5.6	7.4	6.8	6.2	7.9	7.2	6.7
			sensible	5.1	4.9	4.7	6.0	5.8	5.6	6.9	6.6	6.4
	0.3	17.6	total	7.7	7.1	6.4	8.7	8.0	7.3	9.5	8.8	8.0
			sensible	5.5	5.3	5.0	6.6	6.3	6.0	7.5	7.2	6.9
	0.4	29.5	total	8.4	7.7	7.0	9.7	8.9	8.1	10.7	9.9	9.0
			sensible	5.8	5.5	5.2	7.0	6.7	6.3	8.0	7.7	7.3
27/19	0.2	8.5	total	8.2	7.7	7.1	9.1	8.4	7.8	9.6	9.0	8.3
			sensible	6.3	6.1	5.9	7.5	7.2	7.0	8.5	8.3	8.1
	0.3	17.6	total	9.5	8.8	8.2	10.7	10.0	9.2	11.6	10.9	10.0
			sensible	6.8	6.6	6.3	8.2	7.9	7.6	9.3	9.0	8.7
	0.4	29.5	total	10.3	9.6	8.9	11.9	11.1	10.3	13.2	12.2	11.3
			sensible	7.2	6.9	6.6	8.6	8.3	8.0	9.9	9.5	9.2
1 row hot water coil												
Air on DB	W. flow L/s	P.D. kPa	Heating kW	Entering water temp			Entering water temp			Entering water temp		
				50	65	80	50	65	80	50	65	80
15	0.08	9.0	heat	6.4	9.2	11.9	7.1	10.1	13.1	7.6	10.8	14.1
	0.12	18.4	heat	7.2	10.3	13.3	8.2	11.7	15.2	8.9	12.7	16.5
	0.16	30.0	heat	7.7	11.0	14.3	8.9	12.7	16.5	9.6	14.0	18.2
21	0.08	9.0	heat	5.3	8.0	10.8	5.8	8.9	11.9	6.3	9.5	12.7
	0.12	18.4	heat	5.9	9.0	12.1	6.8	10.2	13.7	7.4	11.2	15.0
	0.16	30.8	heat	6.4	9.6	13.0	7.3	11.2	15.0	8.1	13.3	16.5

# Performance Data

## Air Handling



### Note:

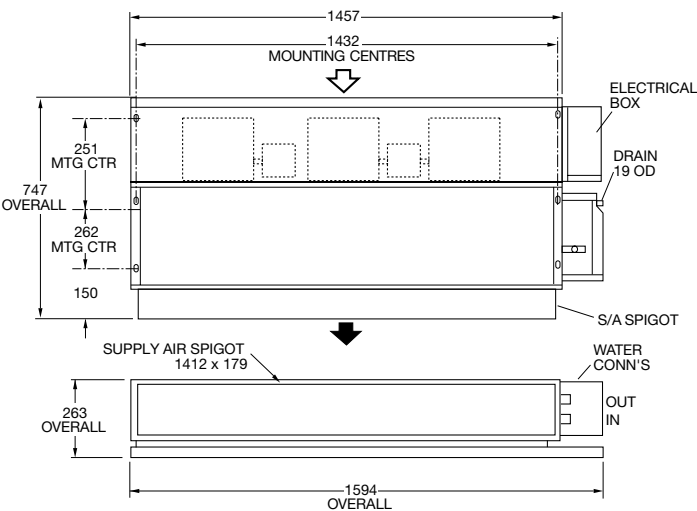
1. Airflows given are for a standard unit with rectangular air spigot and no filter installed.
2. Airflows are for dry coil. Reduce airflow by 10% in high moisture removal conditions.
3. In a free blow application, beware of exceeding indoor fan motor's full load amp limit.
4. Refer to page 70 for filter pressure drop.

## Sound Levels

### Supply Air Outlet

Fan Speed	Sound Pressure Levels (SPL) (dB)						
	dB(A)	Octave Band Centre Frequency (Hz)					
		125	250	500	1K	2K	4K
Low	46	55	50	44	37	31	23
Med	48	55	52	46	40	34	26
High	50	57	55	48	42	37	30

## Dimensions



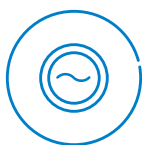
### Return Air Inlet + Case Breakout

Fan Speed	Sound Pressure Levels (SPL) (dB)						
	dB(A)	Octave Band Centre Frequency (Hz)					
		125	250	500	1K	2K	4K
Low	51	55	54	50	43	39	33
Med	53	57	55	52	47	41	36
High	55	59	58	54	48	44	39

Sound levels are specified as in-situ conditions. For more information and adjustment factors for your specific installation please find supplementary booklets under the relevant units on our website [www.temperzone.com](http://www.temperzone.com)

# Premium Range (Low Profile)

IMDL-Y



High Efficiency EC Motor



Easy Clean Plastic Drain



Opposite Hand

# Premium Range (IMDL-Y)

## Specifications



Model	IMDL 40Y	IMDL 60Y	IMDL 90Y	IMDL 130Y
Nominal Air Flow (l/s) *	200	330	400	650
Fan Type	Forward curved centrifugal double inlet double width			
No. of Fan Scrolls	1	2	2	3
Motor Type	Electronically Commutated (EC) DC Direct drive			
Power Source **	1 Phase 230 Volt AC 50 Hz			
No. of Motors	1	1	1	2
Motor Rating (W)	182	243	243	182 + 243
Full Load Amps (A)***	1.4	1.8	1.8	1.4 + 1.8 (3.2)
Electric Heating (kW)	1.5	2.0	3.0	4.0
Electric Heat Current (A)	6.6	8.8	13.2	17.6
Heat Exchanger Type	Aluminium corrugated plate fins to expanded rifled copper tube			
Cooling/Heating Medium	Chilled Water or Hot Water			
Finish	Zinc galvanised steel			
Test Pressure	2100 kPa			
Connection Sizes Cooling Coil (mm)	Ø 20 (¾" BSP)	Ø 20 (¾" BSP)	Ø 25 (1" BSP)	Ø 25 (1" BSP)
Connection Sizes Heating Coil (mm)	Ø 15 (1/2" BSP)			
Air Filter Type	Washable G2 / EU2 (Supplied Standard)			
No. of Air Filters	1	1	1	2
Air Filter Size (mm)	545 x 234 x 13	795 x 234 x 13	1045 x 243 x 13	725 x 243 x 13
Weight Incl. Water (kg)	25	34	46	67
Nett Dry Weight (kg)	24	32	42	62
Shipping Weight (kg)	25	34	45	65

\* with no filters fitted and with a dry coil surface

\*\* Voltage fluctuation limits 200-252V

\*\*\* Fan only, excluding Electric Heating

### Cooling and Heating Coil options:

4 Row Cooling only

3 Row Cooling + 1 Row Heating

4 Row Cooling plus Electric Heating

# IMDL 40Y-4

				Low Air flow			Medium Air flow			Nominal Air flow		
4 row chilled water coil				100 L/s			150 L/s			200 L/s		
Air on DB/WB	W. flow L/s	P.D. kPa	Cooling kW	Entering water temp			Entering water temp			Entering water temp		
				6	7	8	6	7	8	6	7	8
23/17	0.15	6.7	total	2.6	2.4	2.2	3.6	3.3	3.0	3.9	3.6	3.3
			sensible	1.6	1.5	1.4	2.3	2.2	2.1	2.6	2.5	2.4
	0.25	16.7	total	2.9	2.6	2.4	4.1	3.8	3.5	4.6	4.2	3.9
			sensible	1.7	1.6	1.5	2.6	2.4	2.3	2.9	2.7	2.6
	0.35	30.5	total	3.0	2.7	2.5	4.4	4.1	3.7	4.9	4.6	4.2
			sensible	1.8	1.7	1.6	2.7	2.5	2.4	3.0	2.9	2.7
27/19	0.15	6.7	total	3.3	3.1	2.9	4.1	3.8	3.5	4.7	4.4	4.1
			sensible	2.0	1.9	1.8	2.6	2.5	2.4	3.2	3.1	2.9
	0.25	16.7	total	3.5	3.3	3.1	4.6	4.3	4.0	5.6	5.2	4.8
			sensible	2.1	2.0	1.9	2.9	2.7	2.6	3.5	3.4	3.2
	0.35	30.5	total	3.6	3.4	3.2	4.9	4.5	4.2	6.0	5.6	5.2
			sensible	2.2	2.1	2.0	3.0	2.8	2.7	3.7	3.5	3.4

# IMDL 40Y-3/1

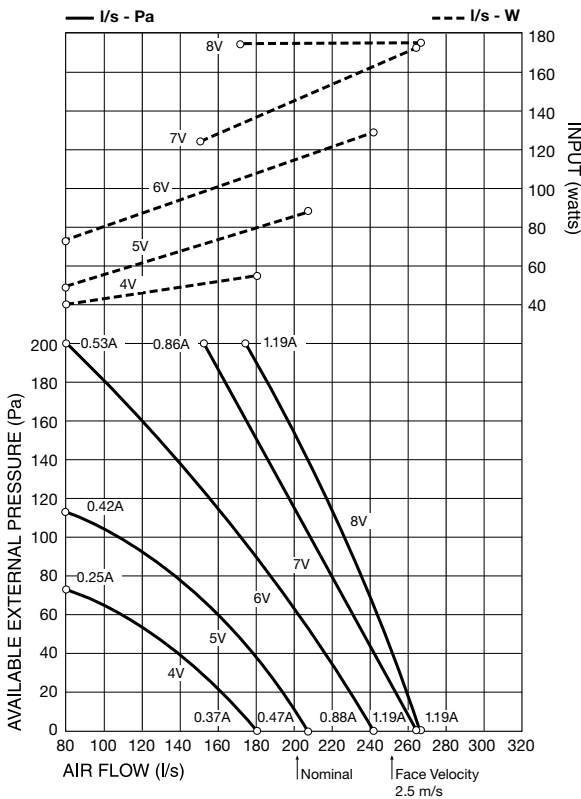
3 row chilled water coil				100 L/s			150 L/s			200 L/s		
Air on DB/WB	W. flow L/s	P.D. kPa	Cooling kW	Entering water temp			Entering water temp			Entering water temp		
				6	7	8	6	7	8	6	7	8
23/17	0.1	5.4	total	2.1	2.0	1.8	2.5	2.3	2.1	2.8	2.5	2.3
			sensible	1.4	1.4	1.3	1.8	1.7	1.6	2.1	2.0	1.9
	0.2	18.78	total	2.5	2.3	2.1	3.1	2.9	2.6	3.6	3.3	3.0
			sensible	1.6	1.5	1.4	2.0	1.9	1.8	2.5	2.3	2.2
	0.25	27.9	total	2.6	2.4	2.1	3.3	3.0	2.7	3.8	3.5	3.2
			sensible	1.6	1.5	1.4	2.1	2.0	1.9	2.5	2.4	2.3
27/19	0.1	5.4	total	2.6	2.4	2.2	3.0	2.8	2.6	3.4	3.1	2.9
			sensible	1.8	1.7	1.6	2.2	2.1	2.0	2.7	2.6	2.5
	0.2	18.8	total	3.1	2.8	2.6	3.7	3.5	3.2	4.4	4.1	3.8
			sensible	2.0	1.9	1.8	2.5	2.4	2.3	3.1	2.9	2.8
	0.25	27.9	total	3.1	2.9	2.7	4.0	3.8	3.5	4.7	4.3	4.0
			sensible	2.0	1.9	1.8	2.6	2.5	2.4	3.1	3.0	2.9
1 row hot water coil												
Air on DB	W. flow L/s	P.D. kPa	Heating kW	Entering water temp			Entering water temp			Entering water temp		
				50	65	80	50	65	80	50	65	80
15	0.04	6.4	heat	1.8	2.6	3.4	2.1	3.0	3.9	2.3	3.4	4.4
	0.07	17.4	heat	2.0	2.9	3.8	2.4	3.5	4.5	2.7	3.9	5.0
	0.1	33	heat	2.1	3.1	4.0	2.6	3.7	4.8	2.9	4.1	5.4
21	0.04	6.4	heat	1.5	2.3	3.0	1.8	2.6	3.5	2.0	3.0	4.0
	0.07	17.4	heat	1.7	2.6	3.4	2.0	3.0	4.0	2.3	3.5	4.6
	0.1	33	heat	1.8	2.7	3.7	2.1	3.2	4.3	2.4	3.7	5.0



# Performance Data

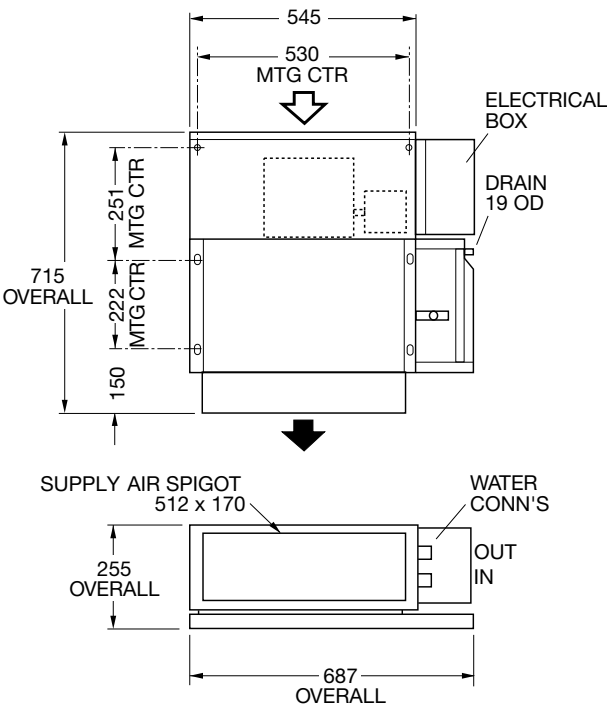
# IMDL 40Y

## Air Handling



**Note:** Airflows are for dry coil. Reduce airflow by 10% in high moisture removal conditions. **Air flows given are for IMDL-Y units without filter installed.** Refer to page 70 for filter pressure drop.

## Dimensions



## Sound Levels

Return Air Inlet + Case Breakout							
Vdc	Sound Pressure Levels (SPL) (dB)						
	dB(A)	Octave Band Centre Frequency (Hz)					
		125	250	500	1K	2K	4K
8	56	56	58	54	50	48	47
7	56	56	58	54	49	47	46
6	53	53	55	51	47	44	42
5	49	50	51	47	44	40	38
4	46	48	48	44	41	36	33
3	40	46	42	39	35	29	25
2	35	41	38	33	28	24	21

Supply Air Outlet							
Vdc	Sound Pressure Levels (SPL) (dB)						
	dB(A)	Octave Band Centre Frequency (Hz)					
		125	250	500	1K	2K	4K
8	50	61	55	45	37	35	29
7	48	59	54	44	37	34	28
6	46	57	51	41	35	31	24
5	42	53	47	37	32	27	20
4	39	49	45	34	28	23	16
3	34	45	40	29	22	15	7
2	33	46	38	24	14	7	0

Sound levels are specified as in-situ conditions. For more information and adjustment factors for your specific installation please find supplementary booklets under the relevant units on our website [www.temperzone.com](http://www.temperzone.com)

# IMDL 60Y-4

				Low Air flow			Medium Air flow			Nominal Air flow		
4 row chilled water coil				250 L/s			300 L/s			330 L/s		
Air on DB/WB	W. flow L/s	P.D. kPa	Cooling kW	Entering water temp			Entering water temp			Entering water temp		
				6	7	8	6	7	8	6	7	8
23/17	0.15	8.5	total	4.9	4.5	4.1	5.2	4.8	4.4	5.4	5.0	4.6
			sensible	3.3	3.1	3.0	3.6	3.5	3.3	3.9	3.7	3.5
	0.22	17.1	total	5.6	5.2	4.7	6.1	5.6	5.1	6.4	5.9	5.4
			sensible	3.6	3.4	3.2	4.0	3.8	3.6	4.2	4.0	3.8
	0.3	29.4	total	6.1	5.6	5.1	6.7	6.2	5.7	7.1	6.6	6.0
			sensible	3.8	3.6	3.4	4.2	4.0	3.8	4.5	4.3	4.1
27/19	0.15	8.5	total	6.0	5.6	5.2	6.4	6.0	5.6	6.6	6.2	5.7
			sensible	4.1	3.9	3.8	4.5	4.4	4.2	4.8	4.6	4.4
	0.22	17.1	total	6.9	6.4	6.0	7.5	7.0	6.5	7.8	7.3	6.8
			sensible	4.4	4.2	4.1	4.9	4.8	4.6	5.2	5.0	4.8
	0.3	29.4	total	7.5	7.0	6.5	8.3	7.7	7.2	8.7	8.1	7.5
			sensible	4.7	4.5	4.3	5.2	5.0	4.8	5.6	5.3	5.1

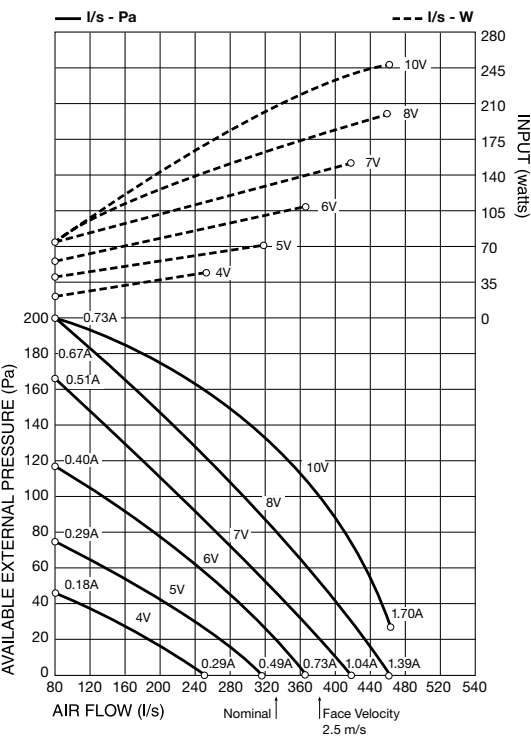
# IMDL 60Y-3/1

3 row chilled water coil				250 L/s			300 L/s			330 L/s		
Air on DB/WB	W. flow L/s	P.D. kPa	Cooling kW	Entering water temp			Entering water temp			Entering water temp		
				6	7	8	6	7	8	6	7	8
23/17	0.11	8.2	total	3.7	3.4	3.1	3.9	3.6	3.2	4.0	3.7	3.3
			sensible	2.8	2.7	2.6	3.1	3.0	2.9	3.3	3.2	3.1
	0.17	18.1	total	4.5	4.0	3.7	4.8	4.4	4.0	5.0	4.6	4.1
			sensible	3.1	3.0	2.8	3.4	3.3	3.1	3.7	3.5	3.3
	0.23	30.6	total	4.9	4.5	4.1	5.3	4.9	4.4	5.6	5.1	4.6
			sensible	3.3	3.1	3.0	3.7	3.5	3.3	3.9	3.7	3.5
27/19	0.11	8.2	total	4.5	4.2	3.9	4.7	4.4	4.0	4.8	4.5	4.1
			sensible	3.5	3.4	3.3	3.9	3.8	3.6	4.1	4.0	3.9
	0.17	18.1	total	5.4	5.0	4.6	5.8	5.4	5.0	6.0	5.5	5.1
			sensible	3.9	3.7	3.6	4.3	4.1	4.0	4.5	4.4	4.2
	0.23	30.6	total	6.0	5.5	5.1	6.5	6.0	5.5	6.7	6.3	5.8
			sensible	4.1	3.9	3.8	4.5	4.4	4.2	4.8	4.6	4.4
1 row hot water coil												
Air on DB	W. flow L/s	P.D. kPa	Heating kW	Entering water temp			Entering water temp			Entering water temp		
				50	65	80	50	65	80	50	65	80
15	0.04	8.1	heat	3.0	4.3	5.5	3.2	4.6	6.0	3.3	4.7	6.2
	0.06	16.8	heat	3.4	4.9	6.4	3.6	5.2	6.8	3.8	5.4	7.0
	0.08	28.1	heat	3.7	5.3	6.9	3.9	5.7	7.3	4.1	5.8	7.6
21	0.04	8.1	heat	2.5	3.8	5.1	2.7	4.1	5.4	2.8	4.2	5.7
	0.06	16.8	heat	2.8	4.3	5.8	3.0	4.6	6.2	3.2	4.8	6.4
	0.08	28.1	heat	3.1	4.6	6.2	3.3	5.0	6.7	3.4	5.2	6.9

# Performance Data

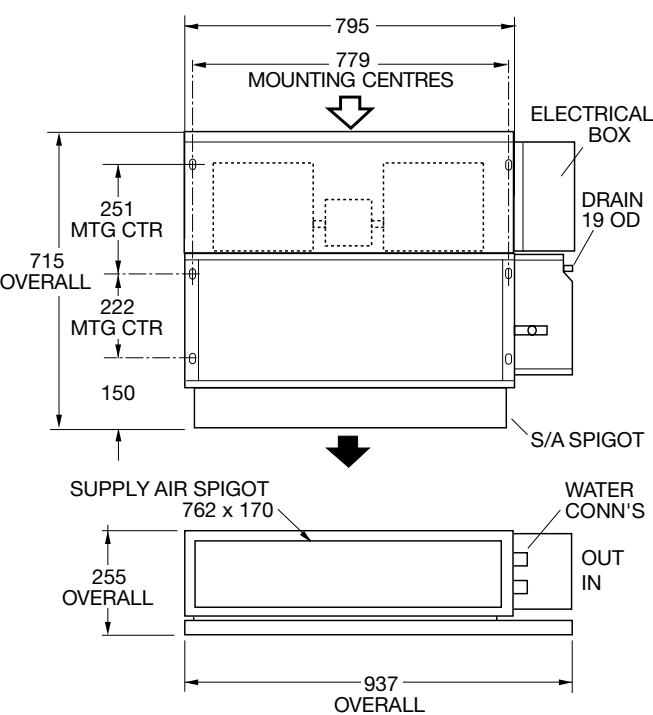
# IMDL 60Y

## Air Handling



**Note:** Airflows are for dry coil. Reduce airflow by 10% in high moisture removal conditions. **Air flows given are for IMDL-Y units without filter installed.** Refer to page 70 for filter pressure drop.

## Dimensions



## Sound Levels

Return Air Inlet + Case Breakout							
Vdc	Sound Pressure Levels (SPL) (dB)						
	dB(A)	Octave Band Centre Frequency (Hz)					
		125	250	500	1K	2K	4K
10	57	58	59	55	52	48	44
8	57	56	58	55	51	48	43
7	55	54	56	53	49	46	41
6	53	52	54	51	47	43	38
5	50	48	52	48	44	40	34
4	46	46	48	45	40	36	29
3	42	42	44	42	35	32	25
2	35	44	40	32	26	24	18

Supply Air Outlet							
Vdc	Sound Pressure Levels (SPL) (dB)						
	dB(A)	Octave Band Centre Frequency (Hz)					
		125	250	500	1K	2K	4K
10	50	59	55	48	40	35	30
8	47	57	52	45	37	32	27
7	46	56	51	43	35	30	24
6	43	52	48	40	33	26	20
5	39	50	44	37	28	22	15
4	37	47	42	34	24	18	10
3	33	43	40	29	17	10	5
2	33	46	39	25	11	7	4

Sound levels are specified as in-situ conditions. For more information and adjustment factors for your specific installation please find supplementary booklets under the relevant units on our website [www.temperzone.com](http://www.temperzone.com)

# IMDL 90Y-4

				Low Air flow			Medium Air flow			Nominal Air flow		
4 row chilled water coil				200 L/s			300 L/s			400 L/s		
Air on DB/WB	W. flow L/s	P.D. kPa	Cooling kW	Entering water temp			Entering water temp			Entering water temp		
				6	7	8	6	7	8	6	7	8
23/17	0.3	8.2	total	5.2	4.8	4.4	6.6	6.1	5.5	7.7	7.1	6.4
			sensible	3.5	3.3	3.1	4.7	4.4	4.2	5.7	5.4	5.1
	0.45	16.7	total	5.5	5.1	4.6	7.3	6.7	6.1	8.6	7.9	7.2
			sensible	3.6	3.4	3.2	4.9	4.7	4.1	6.1	5.8	5.5
	0.6	28.5	total	5.6	5.2	4.7	7.6	7.0	6.4	9.2	8.5	7.7
			sensible	3.7	3.5	3.3	5.1	4.8	4.5	6.3	6.0	5.7
27/19	0.3	8.2	total	6.4	6.0	5.5	8.2	7.6	7.1	9.4	8.8	8.1
			sensible	4.3	4.1	3.9	5.8	5.5	5.3	7.0	6.7	6.5
	0.45	16.7	total	6.7	6.3	5.8	8.9	8.3	7.7	10.6	9.9	9.2
			sensible	4.5	4.3	4.0	6.1	5.8	5.6	7.5	7.2	6.9
	0.6	28.5	total	6.9	6.5	6.0	9.4	8.8	8.1	11.3	10.6	9.8
			sensible	4.6	4.4	4.1	6.3	6.0	5.7	7.8	7.5	7.2

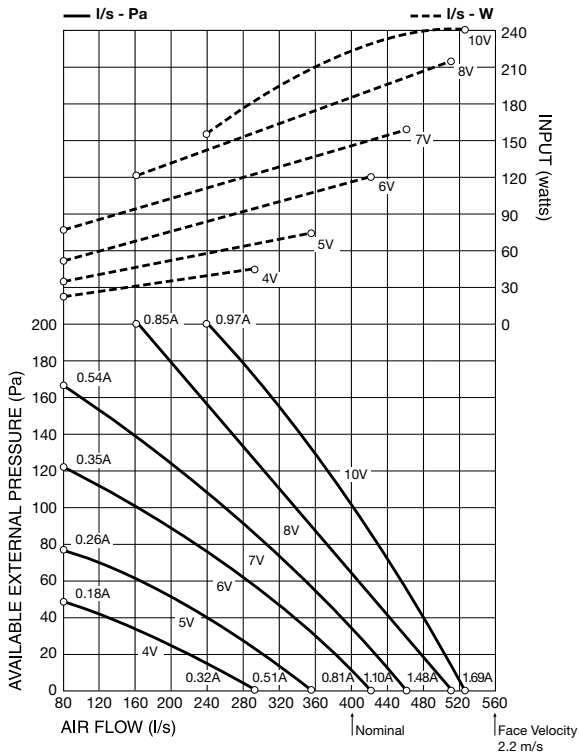
# IMDL 90Y-3/1

3 row chilled water coil				290 L/s			350 L/s			480 L/s		
Air on DB/WB	W. flow L/s	P.D. kPa	Cooling kW	Entering water temp			Entering water temp			Entering water temp		
				6	7	8	6	7	8	6	7	8
23/17	0.25	9.9	total	4.6	4.2	3.8	5.7	5.2	4.7	6.5	5.9	5.4
			sensible	3.1	3.0	2.8	4.1	3.9	3.7	4.9	4.7	4.5
	0.35	18.1	total	4.9	4.5	4.1	6.2	5.7	5.2	7.2	6.7	6.0
			sensible	3.2	3.1	2.9	4.3	4.1	3.9	5.2	5.0	4.7
	0.45	28.1	total	5.1	4.7	4.3	6.6	6.1	5.5	7.8	7.2	6.5
			sensible	3.3	3.2	3.0	4.5	4.3	4.0	5.5	5.2	4.9
27/19	0.25	9.9	total	5.6	5.3	4.9	7.0	6.5	6.0	7.9	7.4	6.8
			sensible	3.9	3.7	3.5	5.1	4.9	4.7	6.1	5.9	5.7
	0.35	18.1	total	6.0	5.6	5.2	7.7	7.1	6.6	8.9	8.3	7.7
			sensible	4.0	3.9	3.6	5.4	5.1	4.9	6.5	6.2	6.0
	0.45	28.5	total	6.2	5.8	5.4	8.1	7.6	7.0	9.6	8.9	8.3
			sensible	4.1	4.0	3.8	5.5	5.3	5.1	6.8	6.5	6.2
1 row hot water coil												
Air on DB	W. flow L/s	P.D. kPa	Heating kW	Entering water temp			Entering water temp			Entering water temp		
				50	65	80	50	65	80	50	65	80
15	0.1	10.3	heat	4.4	6.2	8.1	5.3	7.6	9.9	6.1	8.7	11.4
	0.14	18.8	heat	4.6	6.5	8.6	5.7	8.2	10.7	6.7	9.6	12.5
	0.18	29.4	heat	4.8	6.8	8.8	6.0	8.6	11.2	7.0	10.0	13.0
21	0.1	10.3	heat	3.6	5.4	7.3	4.4	6.7	9.0	5.0	7.7	10.3
	0.14	18.8	heat	3.8	5.7	7.7	4.7	7.2	9.6	5.5	8.4	11.2
	0.18	29.4	heat	3.9	5.9	8.0	5.0	7.5	10.1	5.8	8.8	11.8

# Performance Data

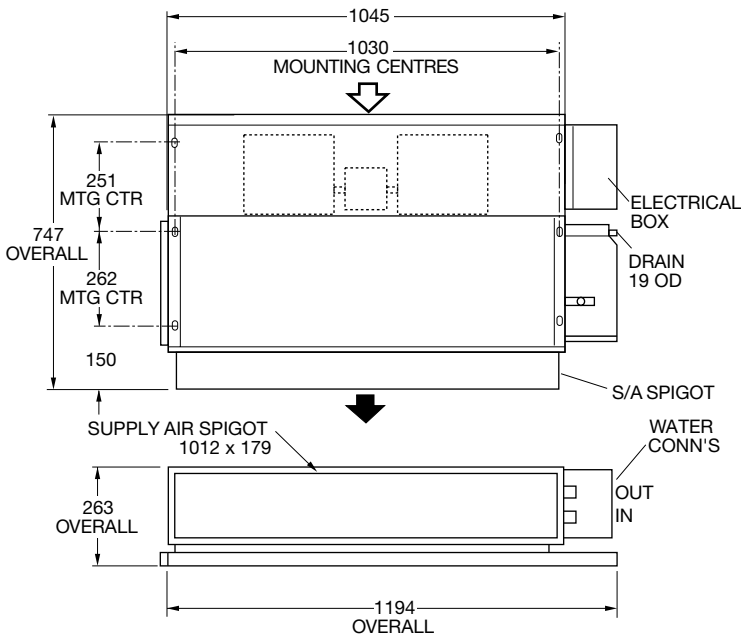
# IMDL 90Y

## Air Handling



**Note:** Airflows are for dry coil. Reduce airflow by 10% in high moisture removal conditions. **Air flows given are for IMDL-Y units without filter installed.** Refer to page 70 for filter pressure drop.

## Dimensions



## Sound Levels

Return Air Inlet + Case Breakout							
Vdc	Sound Pressure Levels (SPL) (dB)						
	dB(A)	Octave Band Centre Frequency (Hz)					
		125	250	500	1K	2K	4K
10	58	60	60	55	51	49	45
8	56	58	59	53	50	47	42
7	53	56	56	51	47	44	40
6	51	54	54	48	44	41	36
5	47	49	49	45	40	37	31
4	43	46	46	42	35	32	24
3	39	43	43	37	31	28	20
2	35	43	39	32	26	22	15

Supply Air Outlet							
Vdc	Sound Pressure Levels (SPL) (dB)						
	dB(A)	Octave Band Centre Frequency (Hz)					
		125	250	500	1K	2K	4K
10	51	60	55	49	43	37	33
8	49	59	53	46	41	34	30
7	47	57	51	43	38	32	27
6	44	54	48	41	34	29	24
5	41	51	45	38	32	25	19
4	37	47	40	35	26	21	12
3	33	42	40	28	19	13	4
2	31	45	35	24	15	9	2

Sound levels are specified as in-situ conditions. For more information and adjustment factors for your specific installation please find supplementary booklets under the relevant units on our website [www.temperzone.com](http://www.temperzone.com)

# IMDL 130Y-4

				Low Air flow			Medium Air flow			Nominal Air flow		
4 row chilled water coil				400 L/s			525 L/s			650 L/s		
Air on DB/WB	W. flow L/s	P.D. kPa	Cooling kW	Entering water temp			Entering water temp			Entering water temp		
				6	7	8	6	7	8	6	7	8
23/17	0.3	10.5	total	8.5	7.9	7.2	9.7	8.9	8.2	10.6	9.7	8.9
			sensible	6.1	5.8	5.5	7.3	7.0	6.7	8.3	8.0	7.6
	0.45	21.8	total	9.5	8.7	7.9	11.1	10.2	9.3	12.4	11.3	10.3
			sensible	6.5	6.1	5.8	7.9	7.5	7.1	9.1	8.6	8.2
	0.6	36.7	total	10.1	9.3	8.4	12.0	11.0	10.0	13.5	12.4	11.3
			sensible	6.8	6.4	6.0	8.3	7.8	7.4	9.6	9.1	8.6
27/19	0.3	10.5	total	10.5	9.8	9.1	11.9	11.0	10.3	12.9	12.0	11.1
			sensible	7.5	7.2	6.9	9.0	8.7	8.4	10.4	10.0	9.7
	0.45	21.8	total	11.7	10.9	10.1	13.6	12.7	11.8	15.2	14.1	13.1
			sensible	8.0	7.7	7.4	9.8	9.4	9.0	11.3	10.9	10.4
	0.6	36.7	total	12.4	11.6	10.7	14.7	13.7	12.7	16.6	15.5	14.3
			sensible	8.4	8.0	7.7	10.2	9.8	9.4	11.9	11.4	10.9

# IMDL 130Y-3/1

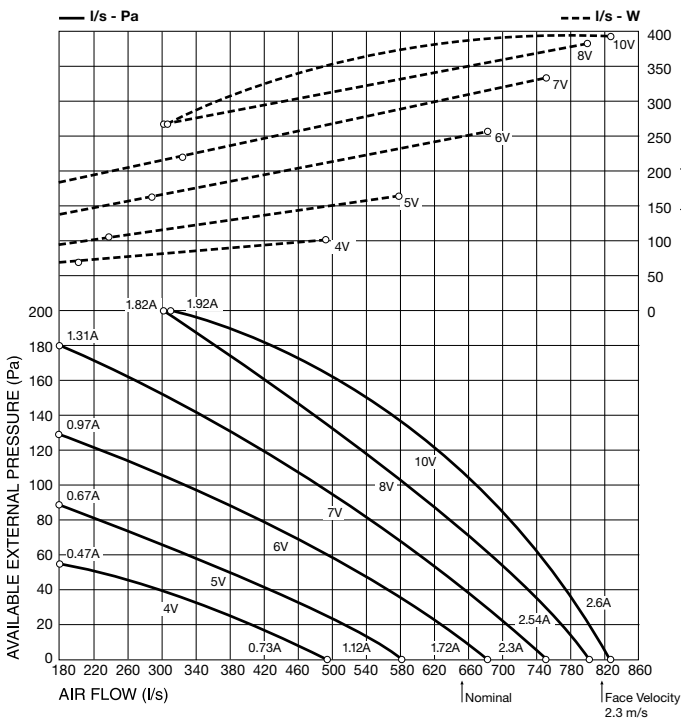
3 row chilled water coil				400 L/s			525 L/s			650 L/s		
Air on DB/WB	W. flow L/s	P.D. kPa	Cooling kW	Entering water temp			Entering water temp			Entering water temp		
				6	7	8	6	7	8	6	7	8
23/17	0.2	8.5	total	6.7	6.2	5.6	7.4	6.8	6.2	7.9	7.2	6.7
			sensible	5.1	4.9	4.7	6.0	5.8	5.6	6.9	6.6	6.4
	0.3	17.6	total	7.7	7.1	6.4	8.7	8.0	7.3	9.5	8.8	8.0
			sensible	5.5	5.3	5.0	6.6	6.3	6.0	7.5	7.2	6.9
	0.4	29.5	total	8.4	7.7	7.0	9.7	8.9	8.1	10.7	9.9	9.0
			sensible	5.8	5.5	5.2	7.0	6.7	6.3	8.0	7.7	7.3
27/19	0.2	8.5	total	8.2	7.7	7.1	9.1	8.4	7.8	9.6	9.0	8.3
			sensible	6.3	6.1	5.9	7.5	7.2	7.0	8.5	8.3	8.1
	0.3	17.6	total	9.5	8.8	8.2	10.7	10.0	9.2	11.6	10.9	10.0
			sensible	6.8	6.6	6.3	8.2	7.9	7.6	9.3	9.0	8.7
	0.4	29.5	total	10.3	9.6	8.9	11.9	11.1	10.3	13.2	12.2	11.3
			sensible	7.2	6.9	6.6	8.6	8.3	8.0	9.9	9.5	9.2
1 row hot water coil												
Air on DB	W. flow L/s	P.D. kPa	Heating kW	Entering water temp			Entering water temp			Entering water temp		
				50	65	80	50	65	80	50	65	80
15	0.08	9.0	heat	6.4	9.2	11.9	7.1	10.1	13.1	7.6	10.8	14.1
	0.12	18.4	heat	7.2	10.3	13.3	8.2	11.7	15.2	8.9	12.7	16.5
	0.16	30.0	heat	7.7	11.0	14.3	8.9	12.7	16.5	9.6	14.0	18.2
21	0.08	9.0	heat	5.3	8.0	10.8	5.8	8.9	11.9	6.3	9.5	12.7
	0.12	18.4	heat	5.9	9.0	12.1	6.8	10.2	13.7	7.4	11.2	15.0
	0.16	30.8	heat	6.4	9.6	13.0	7.3	11.2	15.0	8.1	13.3	16.5



# Performance Data

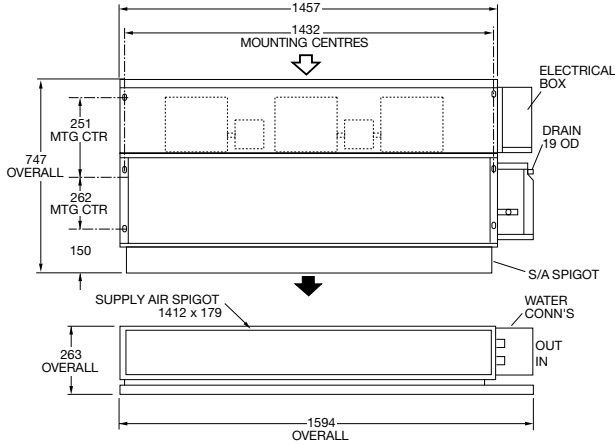
# IMDL 130Y

## Air Handling



**Note:** Airflows are for dry coil. Reduce airflow by 10% in high moisture removal conditions. **Air flows given are for IMDL-Y units without filter installed.** Refer to page 70 for filter pressure drop.

## Dimensions



## Sound Levels

Return Air Inlet + Case Breakout							
Vdc	Sound Pressure Levels (SPL) (dB)						
	dB(A)	Octave Band Centre Frequency (Hz)					
		125	250	500	1K	2K	4K
10	62	62	64	60	56	54	52
8	61	61	63	59	54	52	51
7	61	61	63	58	54	52	51
6	57	58	60	54	51	49	48
5	55	55	57	52	49	46	45
4	51	51	54	49	45	42	40
3	46	47	48	44	40	36	33
2	40	45	44	37	32	28	23

Supply Air Outlet							
Vdc	Sound Pressure Levels (SPL) (dB)						
	dB(A)	Octave Band Centre Frequency (Hz)					
		125	250	500	1K	2K	4K
10	56	63	61	53	49	46	40
8	56	63	59	53	48	45	39
7	55	62	59	52	47	45	39
6	52	59	56	48	45	42	36
5	49	56	53	46	42	39	32
4	46	53	50	42	38	35	28
3	42	53	46	36	32	29	20
2	36	46	42	32	25	20	12

Sound levels are specified as in-situ conditions. For more information and adjustment factors for your specific installation please find supplementary booklets under the relevant units on our website [www.temperzone.com](http://www.temperzone.com)

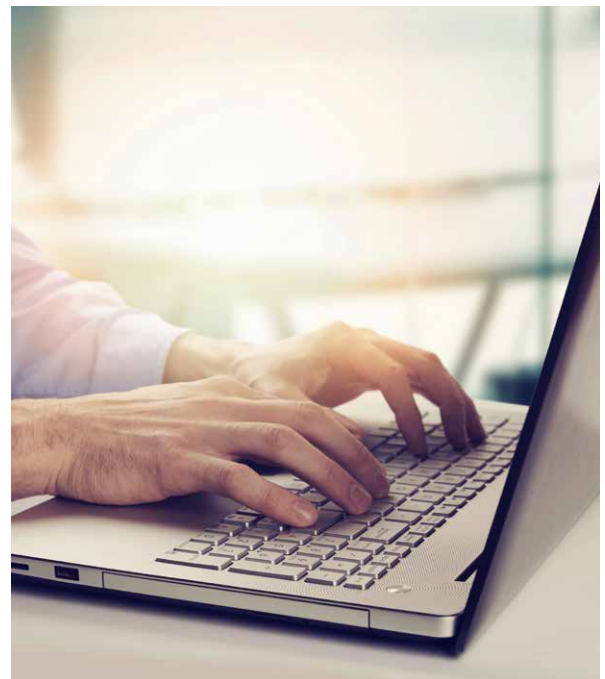


# Temperzone Fan Coil Selection Program

Temperzone offers a comprehensive web based Fan Coil Unit Selection Program. With the ability to set all relevant parameters, including water flow rate, you will instantly select the required fan coil units for your project.

The Fan Coil Selection program can be found at [www.temperzone.biz](http://www.temperzone.biz)

If you need assistance with your selections call your local temperzone office for help.





# Temperzone Customer Care

Temperzone Customer Care is designed to deliver the highest level of support and accessibility to all our customers. This program provides factory trained technicians with the ability to resolve issues on-site, significantly reducing guesswork from commissioning.

With Temperzone products continually evolving to provide higher levels of efficiency, control and protection we want our customers to have the comfort of knowledge that Temperzone will be there right along-side them for the entire product life cycle.

Temperzone offers a wide range of training courses in application, service and commissioning.



## Temperzone Australia Pty Ltd

### ENQUIRIES

Australia: [sales@temperzone.com.au](mailto:sales@temperzone.com.au)  
New Zealand: [nzsales@temperzone.com](mailto:nzsales@temperzone.com)  
Singapore: [sales@temperzone.com.sg](mailto:sales@temperzone.com.sg)

### AUSTRALIA

Sydney: (02) 8822 5700  
Adelaide: (08) 8115 2111  
Brisbane: (07) 3308 8333  
Melbourne: (03) 8769 7600

### DISTRIBUTORS

Newcastle: (02) 4962 1155  
Perth: (08) 6399 5900  
Launceston: (03) 6331 4209

### NEW ZEALAND

Auckland: (09) 279 5250  
Hamilton: (07) 839 2705  
Wellington: (04) 569 3262  
Christchurch: (03) 379 3216

### ASIA

Singapore: (65) 6733 4292  
Shanghai: (21) 5648 2078

**temperzone.com**  
**temperzone.biz**

