

SPECIFICATIONS



Indoor Unit	(845-171-001)	ISD 171LYX
Outdoor Unit	(846-171-003)	OSA 171RLTFH-S2 (3Ø)
Cooling capacity (net) *		14.5 kW
Cooling capacity range (gross)		8.6 ~ 18.5 kW
Heating capacity *		14.9 kW
Heating capacity range		7.0 ~ 18.3 kW
Electrical input - cooling		4.4 kW
Electrical input - heating		4.3 kW
EER / AEER (cooling) *		3.26 / 3.23
COP / ACOP (heating) *		3.42 / 3.39
Unit Controllers		UC8 / IUC
Refrigerant		R32
Refrigerant precharge for 15 m		4.1 kg
Minimum floor area (@2.4m below ceiling diffuser)		8.9 m ²
Additional charge req'd for over 15 m line length		60 g/m
Maximum extended line length		60 m
Max. charge / Min. floor area (below ceiling diffuser)		6.8 kg / 24.6 m ²
Separation limit: OSA above ISD		20 m
Separation limit: OSA below ISD		20 m
Suction line		19 mm OD
Liquid line		9.5 mm OD
Compressor oil type		POE-46 (NXG5020 or equivalent)
Additional oil charge over 40m line length		10 ml/m
Compressor type		inverter scroll
Power supply via OSA **		3 ph. 400 V ac 50 Hz + N + E
Compressor (3ph.) run amps at rating cond. *		6 A/ph.
Indoor fan motor size		600 W
Rated indoor fan speed		6 V
Indoor fan motor (1ph.) - full load		3.5 A
Outdoor fan motor (1ph.) - full load		1.3 A
Outdoor fan capacitor size		6 µfd
Control circuit breaker (internal)		10 A
Running amps (total system) *		9.0 / 6.5 / 6.5 A
Max. running amps (total system)		15 / 11 / 11 A
RCD type recommended		type B, 30mA, 3 pole
Net weight ISD / OSA		68 kg / 105 kg

Accessories:

ISD Spring mounting kit	307-161-101
ISD Spigot plate adaptor Ø400 x 2 (NZ Only)	525-271-705
ISD Filter box c/w EU2/G2 filter (NZ only)	493-000-004
ISD Replacement filter (NZ only)	119-000-082
ISD Supply air plenum Ø400 x 2 (NZ only)	492-000-004
ISD Return air plenum Ø400 x 2 (NZ only)	492-100-004
ISD Fresh air inlet spigot Ø150 (NZ only)	325-000-051
OSA Drain connection adaptor 25/13mm	060-000-039
OSA Anti-vibration mounts - rubber (x4)	060-000-170

Optional Controls:

SAT-3 Room temperature controller	201-000-146
Six Zone Control kit for SAT-3	201-000-073
TZT-100 Room temperature controller	201-000-350

Refer to temperzone for other options, eg remote sensors, connection wires.

* Tested in accordance with AS/NZS 3823

20005

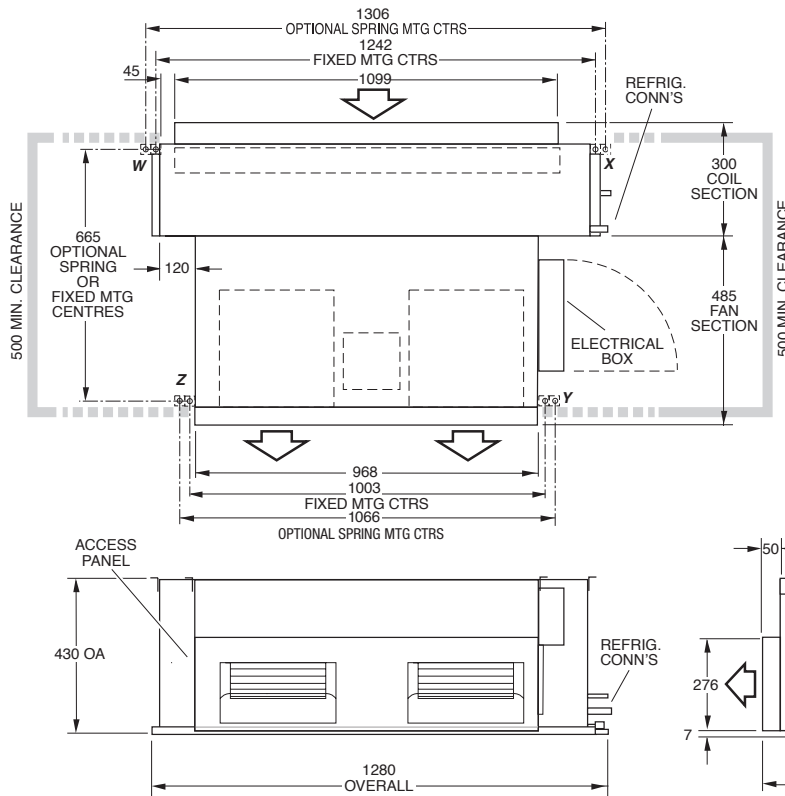
** Voltage range: 376–440V

DIMENSIONS (mm)



Not to Scale

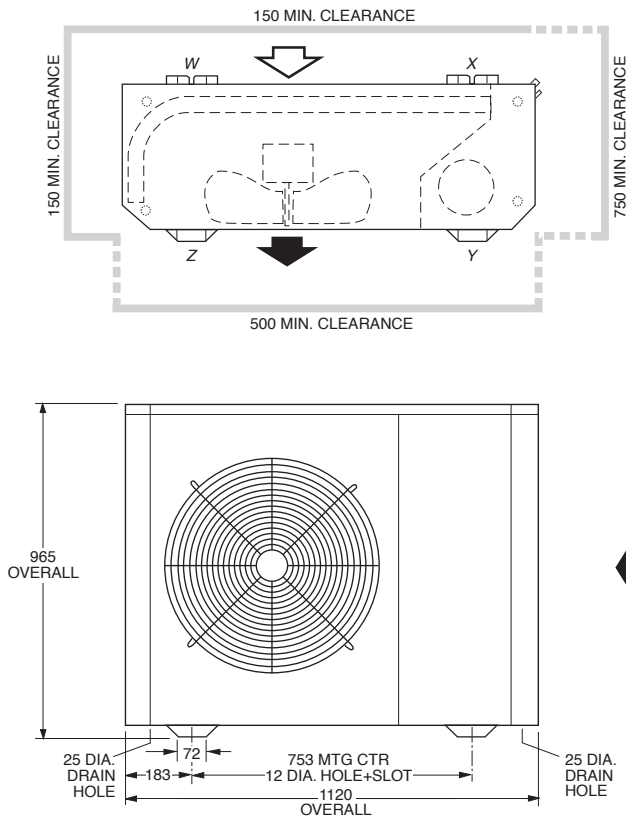
ISD 171LYX Indoor Unit



POINT LOADS (kg)			
W	X	Y	Z
22	13	24	9

Note: Fan motor can be accessed from panel above, below or sides; no more than two panels at once.

OSA 171RLTF Outdoor Unit

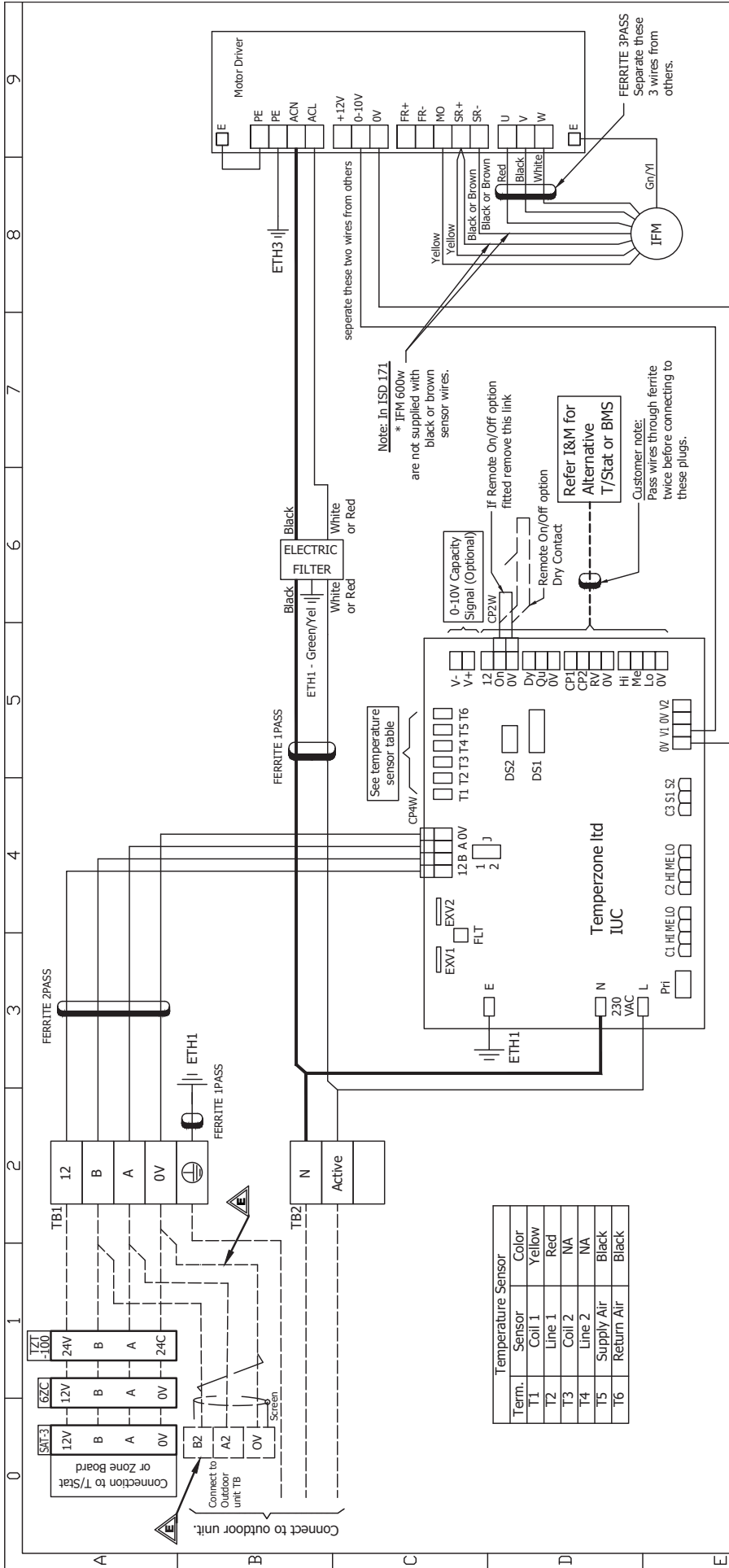


POINT LOADS (kg)			
W	X	Y	Z
22	25	42	16

Recommended Connecting Pipe Sizes
 Suction : 19 mm OD
 Liquid : 10 mm OD

NOTE

Specifications are subject to change without notice due to the manufacturer's ongoing research and development programme.



Term.	Sensor	Color
T1	Coil 1	Yellow
T2	Line 1	Red
T3	Coil 2	NA
T4	Line 2	NA
T5	Supply Air	Black
T6	Return Air	Black


UNIT	DS1 DIP switch selections				DS2 DIP switch selections			
	DIP 1	DIP 2	DIP 3	DIP 4	DIP 1	DIP 2	DIP 3	DIP 4
ISD171	On	On	Off	Off	On	Off	Off	Off
ISD211	On	On	Off	Off	On	Off	Off	Off
ISD251	On	On	Off	Off	On	Off	Off	Off

Step 1: Set Output Voltage for HIGH				Step 2: Set Voltage Range LOW-HIGH			
DIP 1	DIP 2	DIP 3	HIGH	DIP 4	DIP 5	RANGE	
Off	Off	Off	6.5	Off	Off	2	
On	Off	Off	7	On	Off	3	
Off	On	Off	7.5	Off	On	4.5	
On	On	Off	8	On	On	6	
Off	Off	On	8.5				
On	Off	On	9				
Off	On	On	9.5				
On	On	On	10				

6ZC	CP2W	CP4W	IFM	IUC	SAT-3	TB	TZT-100
6 Zone Controller	Connector Plug 2 Way	Connector Plug 4 Way	Indoor Fan Motor	Indoor Unit Controller	SAT-3 Controller	Terminal block	TZT-100 Controller

Position	Definition
1	Cable length > 10m and IUC is at terminating of cable.
2	Cable length < 10m and/or not at cable terminating end. (DEFAULT)

REV	MODIFICATION	DATE	REF	ENG
E	Added Terminal block & OV wire leading to outdoor unit TB.	05-04-23	ECN5094	G.S.S.
D	Updated DIP switch settings for ISD 211 and 251	24-03-22	ECN5027	R.K.
C	Temp. Sensor T2 color Red was Blue	30-12-20	N4345	R.P.B.
B	EMC compliance updates.	26-08-20	N4327	A.W.G.


temperzone Ltd 2019
 DO NOT SCALE - ASK

Client Wiring

Drawn: D.A.B. Date: 24-07-19 Title: ISD 171/211/251 LYX Wiring Schematic
 Approved: *A.V.*

Rev: E
 Drawing No: 291-003-099
 SHEET 1 OF 1

Notes:
To adjust indoor fan speed L/M/H settings, see section 5.2.6 of Installation & Maintenance document

