

<b>Indoor Unit</b>	(525-501-001 / 525-511-001)	<b>ISD 380KB(H/V)-P</b>
<b>Outdoor Unit</b>	(536-501-201)	<b>OSA 380RKTBGV (digital)</b>
Cooling capacity (net) to AS/NZS 3823 T1		35.8 kW
Heating capacity H1		35.7 kW
Electrical input - cooling		11.1 kW
Electrical input - heating		11.3 kW
EER / AEER (cooling)		3.22 / 3.20
COP / ACOP (heating)		3.17 / 3.16
Unit Controllers		UC6
Refrigerant		R410A
Refrigerant precharge for 10 m		6.55 kg/sys.
Additional charge req'd for over 10 m		100 g/m
Base refrigerant charge OSA		5.55 kg/sys.
Maximum line length		60 m
Separation limit: OSA above ISD		20 m
Separation limit: OSA below ISD		20 m
Suction line		22 mm OD (x2)
Liquid line		13 mm OD (x2)
Compressor oil type		POE 32-3MAF (or equivalent)
Additional oil charge over 40m line length		20 ml/m
Compressor type		digital scroll + fixed
Power supply via OSA		3 ph. 400V ac 50Hz + N + E
Compressor (3ph.) run amps at rating cond.		8 A (x2)
Compressor overload setting		11.5 A (x2)
Indoor fan motor size		EC plug 350 dia. 1.3kW (x2)
Nominal airflow at rating conditions		2100 l/s
Indoor fan motor (3ph.) - full load		2.1 A/ph. (x2)
Outdoor fan motor (1ph.) - full load		1.7 A (x4)
Outdoor fan capacitor size		8 $\mu$ fd (x4)
Control circuit breaker (internal)		2 A
Auxillary power outlet (1ph.)overload setting		10 A
Running amps (total system)		17 / 22 / 17 A
Max. running amps (total system)		22 / 27 / 22 A
RCD type recommended		type A, 30mA, 3 pole
Net weight ISD		169 kg
Net weight OSA		458 kg

**Accessories:**

Spring Mounting Kit	307-341-101
Filter Box c/w EU2/G2 rated filter <sup>(NZ Only)</sup>	525-501-605
ISD Replacement filter	119-000-032 (x3)
UC6 Service Interface tool	201-000-379

**Optional Controls:**

SAT-3 Room temperature controller	201-000-146
TZT-100 Room temperature controller	201-000-350

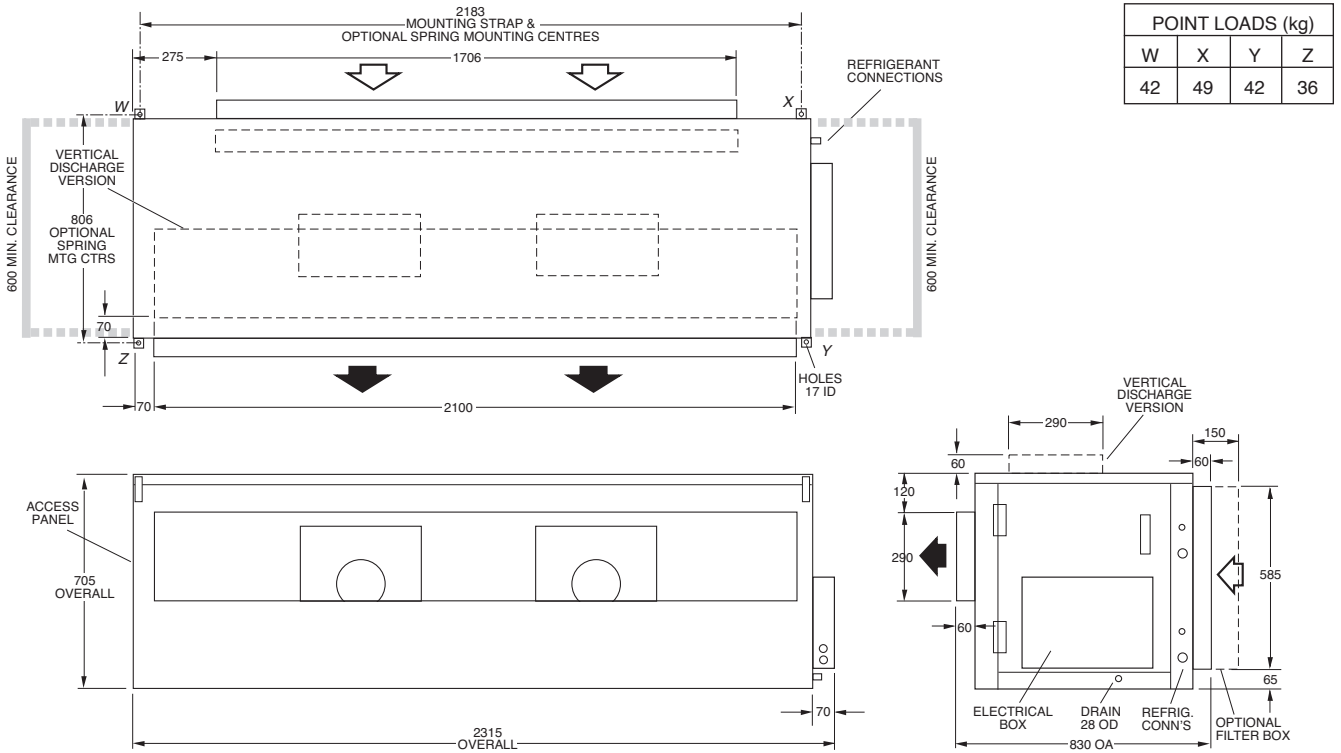
Refer to temperzone for other options, eg remote sensors, connection wires.

# DIMENSIONS (mm)

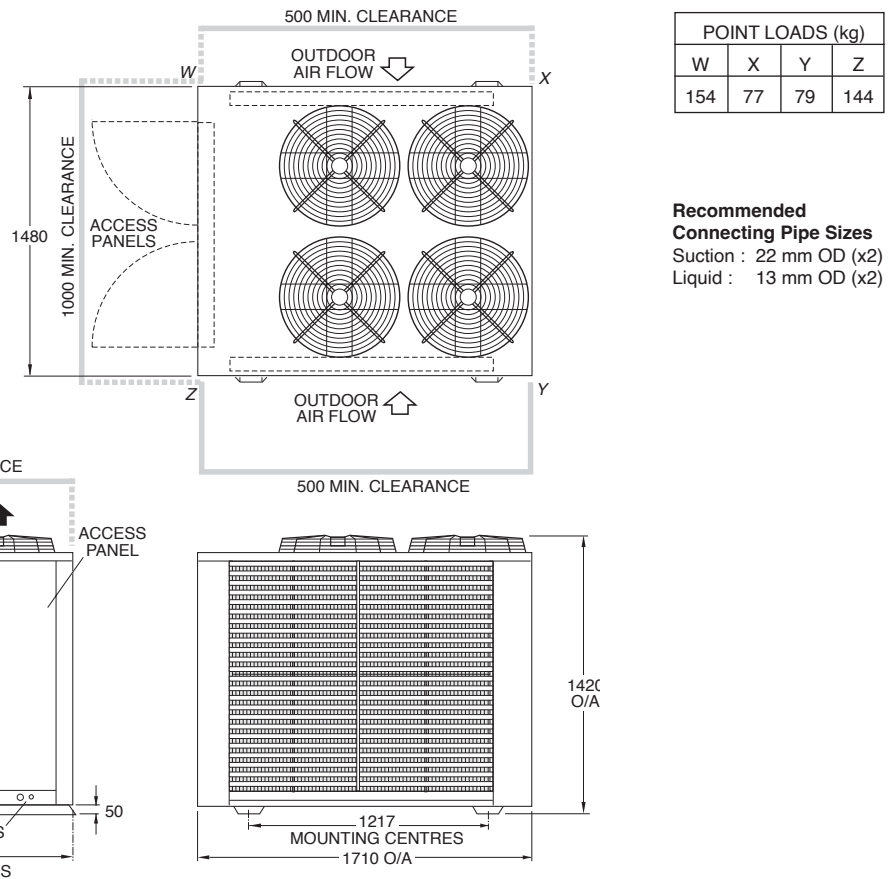


Not to Scale

## ISD 380KB(H/V)-P Indoor Unit



## OSA 380RKTBGV Outdoor Unit



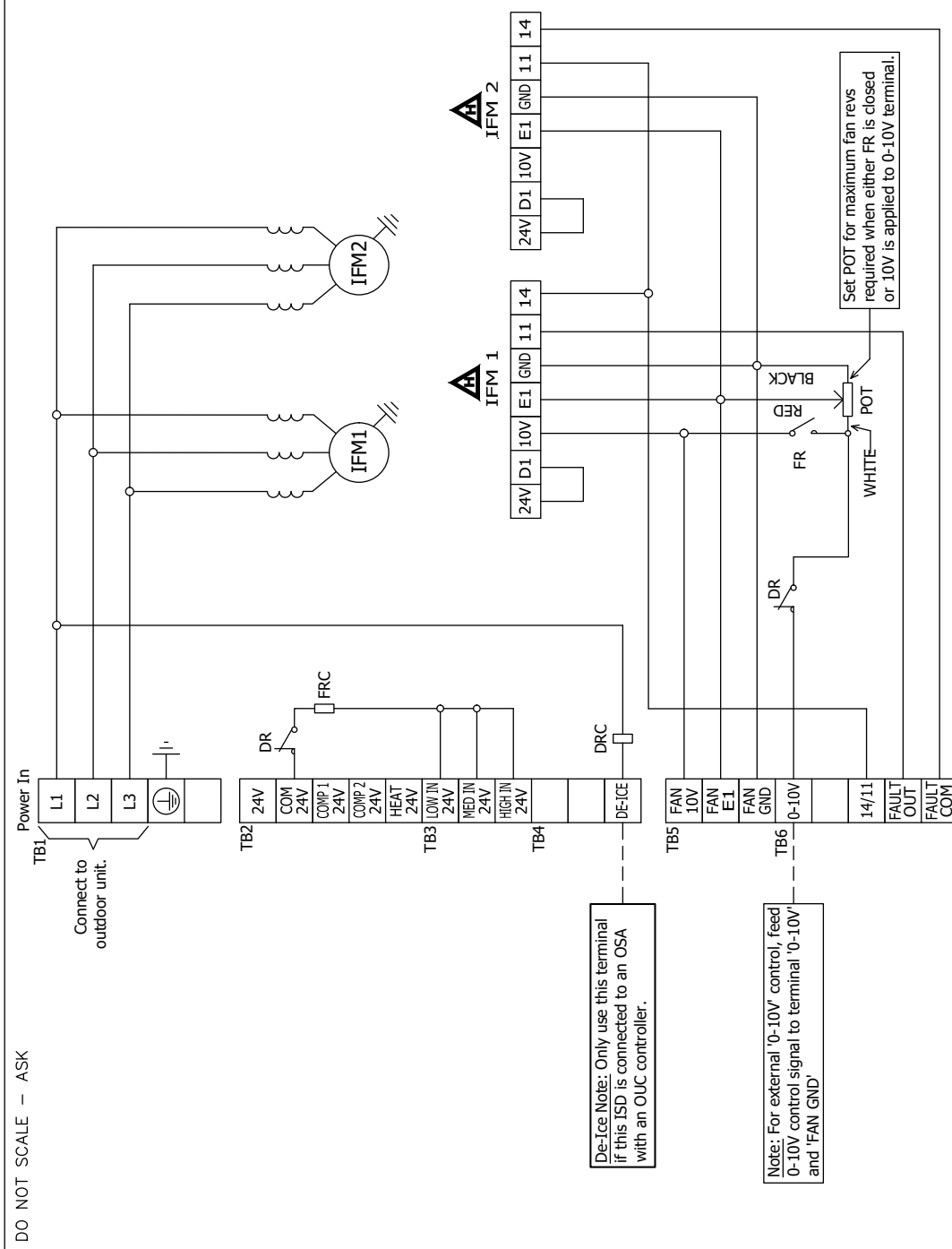
### NOTE

Specifications are subject to change without notice due to the manufacturer's ongoing research and development programme.

# INDOOR UNIT WIRING

Indoor-Outdoor Connection Wiring: refer 'Installation & Maintenance' pamphlet, page 6.

Model	ISD	310-P	380-P
Voltage In	V	400/415	400/415
IFM Full load AMPS	A	2.5 x 2	2.5 x 2
DR	De-ice Relay		
DRC	De-ice Relay Coil		
FR	Fan Relay		
FRC	Fan Relay Coil		
IFM	Indoor Fan Motor		
POT	Potentiometer (max speed)		



De-Ice Note: Only use this terminal if this ISD is connected to an OSA with an OUC controller.

Note: For external '0-10V' control, feed 0-10V control signal to terminal '0-10V' and 'FAN GND'

Client Wiring ---

Title		ISD 310 & 380KB-P <b>WIRING SCHEMATIC</b>	
Client Wiring ---			
Drawn	CMW	Date	27-01-11
Aprvd		Drawing No.	525-504-002
		Revision	H

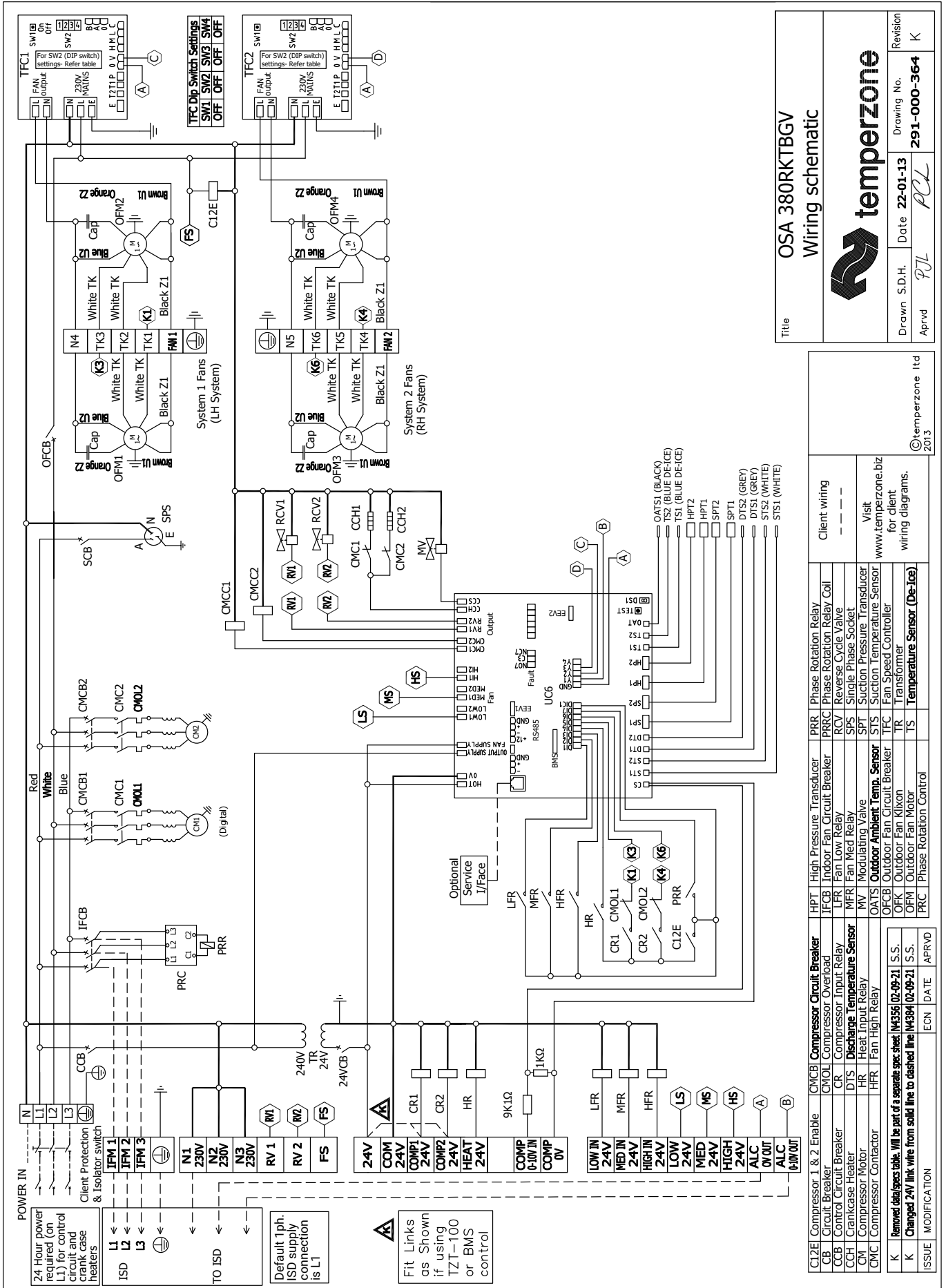
ISSUE	MODIFICATION	ECN	DATE	APRVD	DRG SIZE	No.	DESCRIPTION	Mat'l	FINISH	No.
H	Updated fan terminal connections for Zeilil	5125	26-10-23	R.K.						
G	Update fan terminal connections for Sanmu	N3669	18-01-23	A.G.V.						
F	"Fan Earth Symbol" Changed to "Fan E1"	N4056	24-01-18	M.A.K.						
E	Update earth symbols; 24V was HOT 24V, Designate TBs 1-6	N3994	03-10-17	L.O.L.						
D	IFM 2 10V Wire Removed	N3359	30-08-13	C.M.W.						
C	IFM Full load Amps corrected on 380-P	N3147	05-02-13	R.A.S						

Programmed by

©temperzone ltd 2009

# OUTDOOR UNIT WIRING

Indoor-Outdoor Connection Wiring: refer 'Installation & Maintenance' pamphlet, page 6.



Title  
OSA 380RKTBGV  
Wiring schematic



Revision No. **291-000-364**  
Drawing No. **291-000-364**  
Date **22-01-13**  
Aprvd **PJL**  
Drawn S.D.H.

Client wiring  
Visit [www.temperzone.biz](http://www.temperzone.biz) for client wiring diagrams.

HPT	High Pressure Transducer	PRR	Phase Rotation Relay
IFCB	Indoor Fan Circuit Breaker	PRRC	Phase Rotation Relay Coil
LFR	Fan Low Relay	RCV	Reverse Cycle Valve
MFR	Fan Med Relay	SPS	Single Phase Socket
MV	Modulating Valve	SPT	Suction Pressure Transducer
OATS	Outdoor Ambient Temp. Sensor	STS	Suction Temperature Sensor
OFBCB	Outdoor Fan Circuit Breaker	TFC	Fan Speed Controller
OFK	Outdoor Fan Klaxon	TR	Transformer
OFM	Outdoor Fan Motor	TS	Temperature Sensor (De-Ice)
PRC	Phase Rotation Control		

CMCB1	Compressor Circuit Breaker	CMCB2	Compressor Circuit Breaker
CO	Compressor Overload	CR	Compressor Input Relay
CCH	Crankcase Heater	DTS	Discharge Temperature Sensor
CM	Compressor Motor	HR	Heat Input Relay
CMC	Compressor Contactor	HFR	Fan High Relay
K Removed data/specs table. Will be part of a separate spec sheet 1/4/356 02-09-21 S.S.			
K Changed 24V link wire from solid line to dashed line 1/4/364 02-09-21 S.S.			
ISSUE	MODIFICATION	ECN	DATE
			APRVD

©temperzone ltd 2013