

SPECIFICATIONS



| | |
|--|------------------------------------|
| Model | OPA 970RLTB1FPQ-Z-S2 Econex |
| Configuration | Horizontal Supply Air |
| Item No. (Standard / Opposite Hand) | 867-097-701 / 867-097-710 |
| Configuration | Downward Supply Air |
| Item No. (Standard / Opposite Hand) | 867-097-723 / 867-097-732 |
| Cooling capacity (net) ¹ | 88.9 kW |
| Cooling capacity range (gross) | 15.4 ~ 99.2 kW |
| Heating capacity ¹ | 88.2 kW |
| Heating capacity range | 14.3 ~ 96.1 kW |
| Electrical input - cooling | 30.0 kW |
| Electrical input - heating | 26.3 kW |
| EER / AEER (cooling) ¹ | 2.97 / 2.96 |
| COP / ACOP (heating) ¹ | 3.35 / 3.34 |
| Operating Range (outdoor ambient) - cooling | -10°C ~ 50°C |
| Operating Range (outdoor ambient) - heating | -10°C ~ 25°C |
| Controller | UC8 (x2) |
| Refrigerant | R32 |
| Refrigerant Charge | 10.5 kg/sys. |
| Minimum floor area (@2.4m below ceiling diffuser) | 59 m ² |
| Compressor oil type | POE-46 (NXG5020 or equivalent) |
| Compressor type | inverter + fixed scroll |
| Power supply ² | 3 ph. 400 V ac 50 Hz + N + E |
| Compressor (3ph.) run amps at rating cond.(inv./fixed) | 19 A/ph.(x1) / 15.5 A/ph.(x1) |
| Compressor + VSD circuit breaker | 32 A (x2) |
| Indoor fan motor size | EC Plug 500 dia. 3.65kW (x2) |
| Nominal air flow at rating conditions | 4 800 l/s |
| Indoor fan motor (3ph.) - full load | 4.5 A/ph. (x2) |
| Outdoor fan motor (3ph.) - full load | 5.5 A/ph. (x2) |
| Outdoor fan - max. external static available@ 11 500 l/s | 125 Pa |
| Control circuit breaker (internal) | 2 A |
| Single phase socket circuit breaker | 10 A |
| Running amps (total system) ¹ | 46 / 43 / 46 A |
| Max. running amps (total system) | 64 / 63 / 64 A |
| RCD type recommended | type B, 30mA, 3 pole |
| Net weight (excl. cowl) | 1294 kg |
| Shipping weight (excl. cowl) | 1320 kg |
| Net Weight c/w Economiser | 1346 kg |

Accessories:

| | |
|--|--|
| Filters - rated EU4/G4 disposable | 019-400-004 500x500x50 (x9) ³ |
| Filters - rated EU4/G4 washable (NZ Only) | 019-000-033 500x500x50 (x9) ³ |
| Drain tundish (2 per set; 2 sets required) | 060-000-653 |

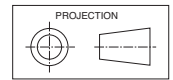
Refer to temperzone for other options.

¹ Tested in accordance with AS/NZS 3823

² Voltage range: 376-440V

³ Filter sizes are nominal; refer to Temperzone for actual measurements.

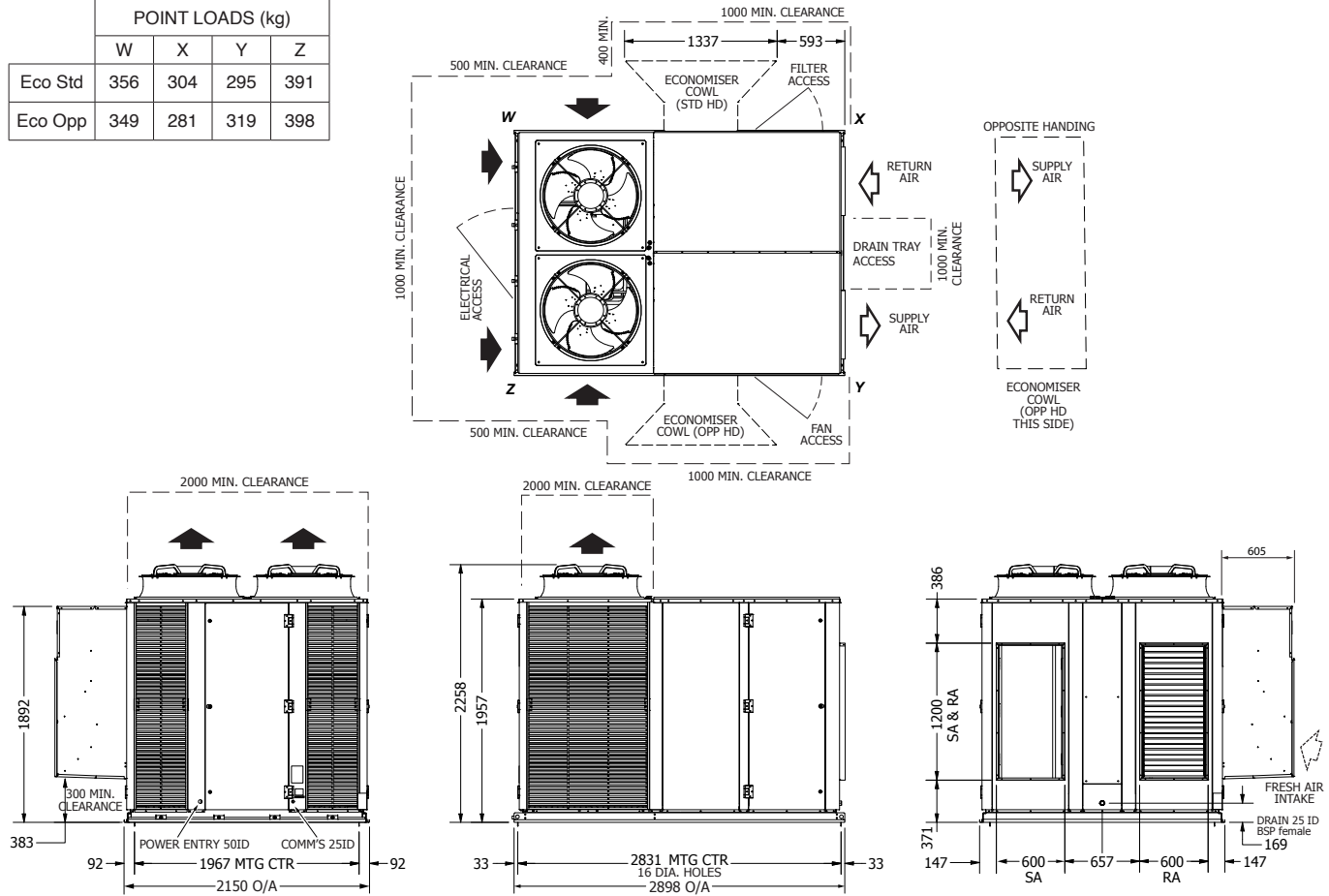
DIMENSIONS (mm)



OPA 970RLTBFPQ01-Z-S2 Standard Hand, Horizontal Supply

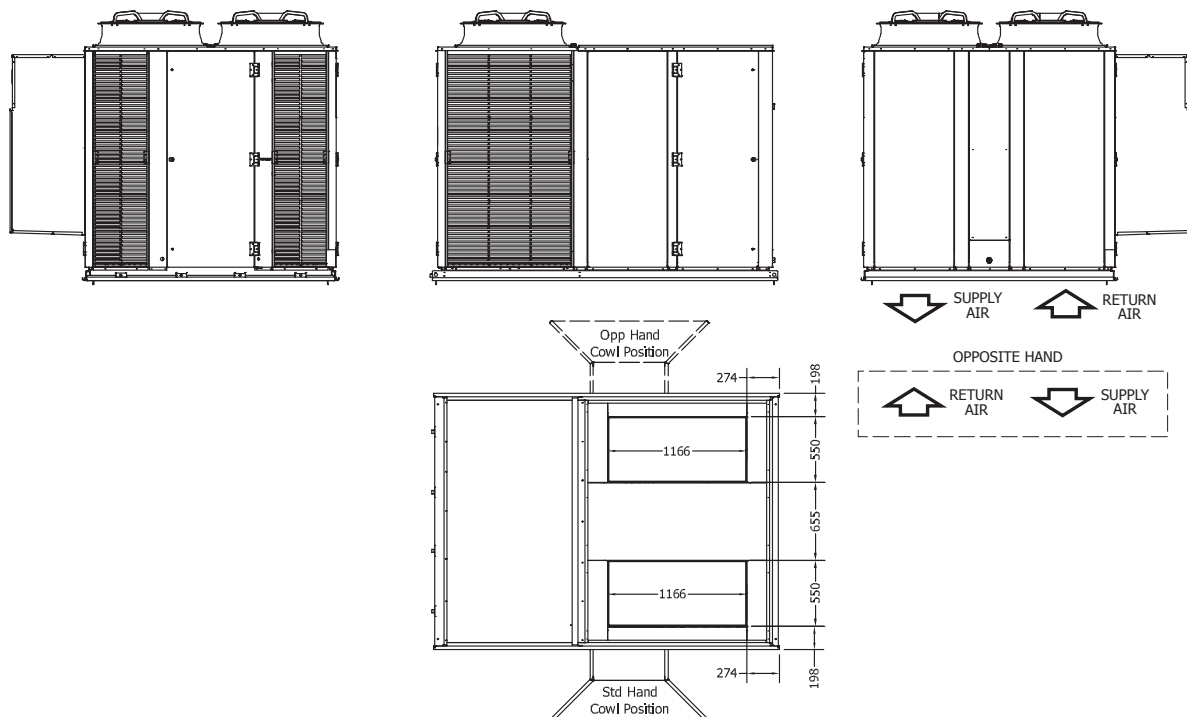
Not to Scale

| | POINT LOADS (kg) | | | |
|---------|------------------|-----|-----|-----|
| | W | X | Y | Z |
| Eco Std | 356 | 304 | 295 | 391 |
| Eco Opp | 349 | 281 | 319 | 398 |



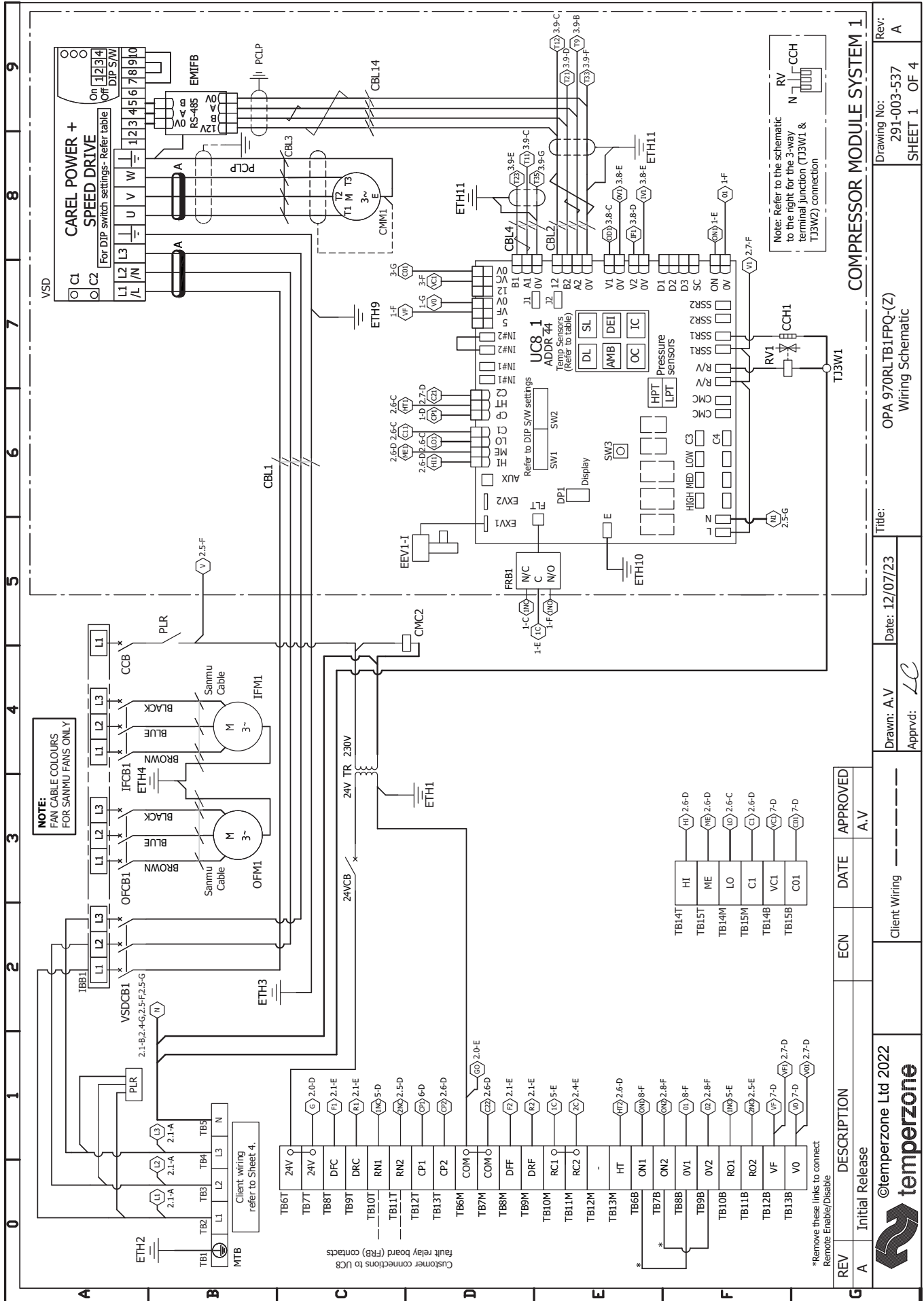
OPA 970RLTBFPQ23-Z-S2 Standard Hand, Downward Supply

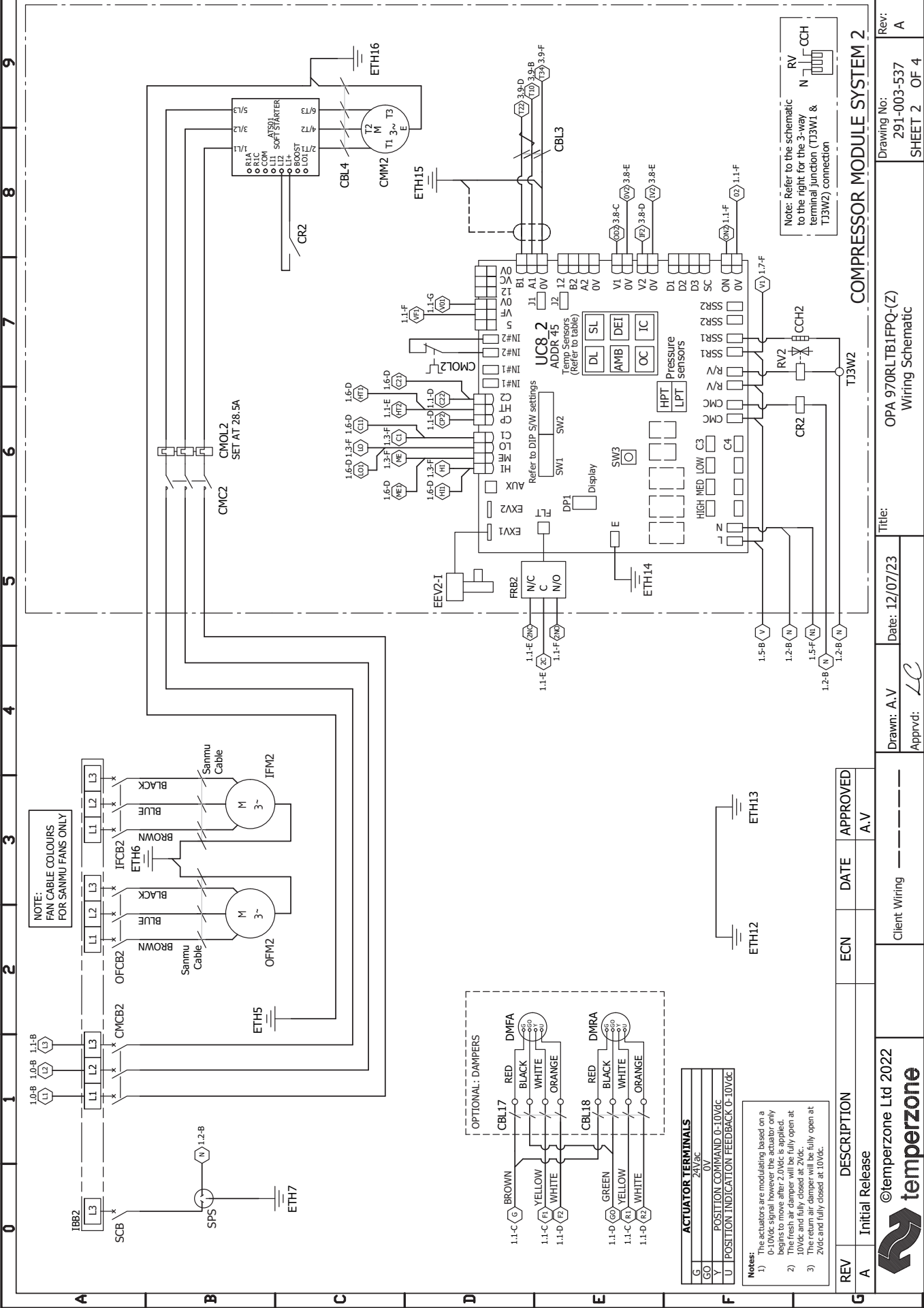
Clearances as above



NOTE

Specifications are subject to change without notice due to the manufacturer's ongoing research and development programme.





[illegible]