

SPECIFICATIONS



Model	CWP 90RELSFY-S2
Item No.	573-009-002
Cooling capacity (net) *	9.9 kW
Cooling capacity range (gross)	4.1 kW ~ 10 kW
Heating capacity *	8.9 kW
Heating capacity range	3.7 kW ~ 8.9 kW
Supplementary Electric Heat	3.0 kW
Electrical input - cooling	2.6 kW
Electrical input - heating (reverse cycle)	2.4 kW
EER / AEER (cooling) *	3.80 / 3.74
COP / ACOP (heating) *	3.69 / 3.63
Unit Controller	UC8
Refrigerant	R32
Refrigerant charge	0.9 kg
Minimum floor area (@2.4m below ceiling diffuser)	1.6 m ²
Compressor type	inverter scroll
Water connections	3/4" male BSP
Nominal EWT on cooling	30°C
Nominal EWT on heating	20°C
Nominal Water Flow @ EWT – LWT = 5k	0.6 l/s
Entering system pressure drop @ nominal flow	62 kPa (9 psi)
Min. water temp. Heat cycle at nominal flow	10°C
Min. water temp. Cool cycle at nominal flow	15°C
Min. water temp. Cool cycle with water regulating valve	5°C
Max. EWT Heat cycle at nominal flow	30°C
Max. EWT Cool cycle at nominal flow	50°C
Min. water flow @ nominal EWT	0.17 l/s
Max. water pressure – excluding hoses	3200 kPa (464 psi)
Power supply **	1ph. 230V ac 50Hz + N + E
Compressor run amps at rating cond.*	10.5 A
Indoor fan motor size	500 W (EC)
Nominal airflow at rating conditions	375 l/s
Indoor fan motor (1ph.) - full load	4 A
Control circuit breaker (internal)	10 A
Running amps (total system)	11 A
Max. running amps (total system, incl.elec heat)	15.5 A
RCD type recommended	type F, 30mA, 1 pole
Net weight (excl. water)	90 kg

Accessories:

Water hoses 600mm long, rated 1720 kPa (250psi)	3/4" female BSP, optional
Replacement filter - rated EU2/G2	119-000-087 387x405x13

Optional:

TZT-100 Room temperature controller	201-000-350
-------------------------------------	-------------

Refer to temperzone for other options, eg remote sensors

* Tested in accordance with AS/NZS 3823

** Voltage range: 216–253V

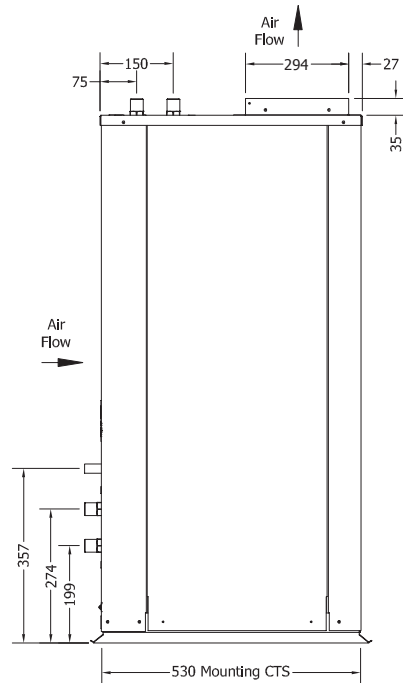
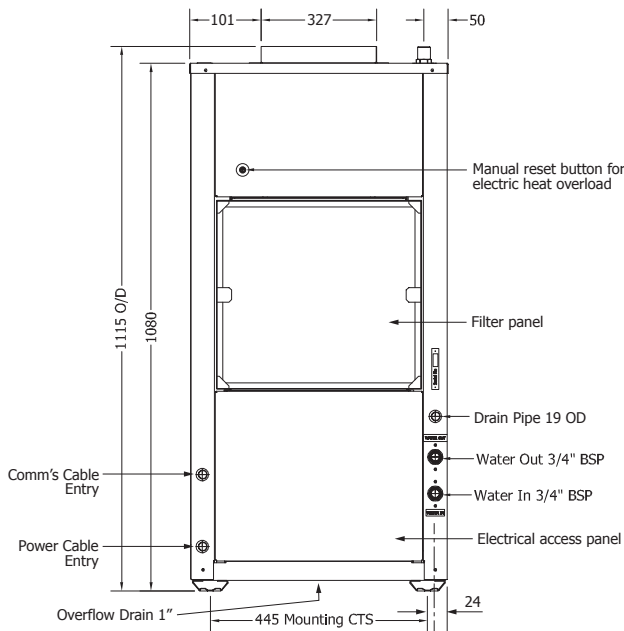
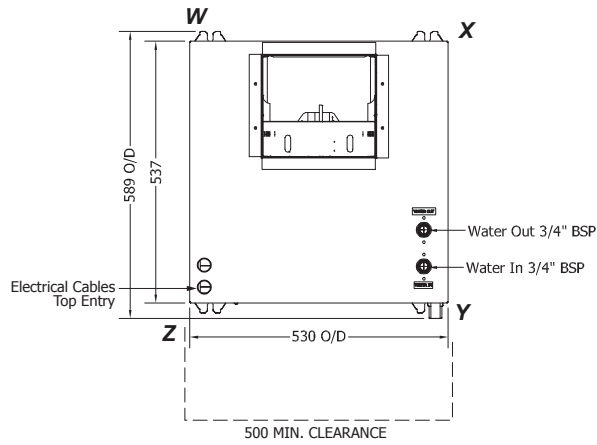


Not to Scale

CWP 90RELSFY-S2 Standard

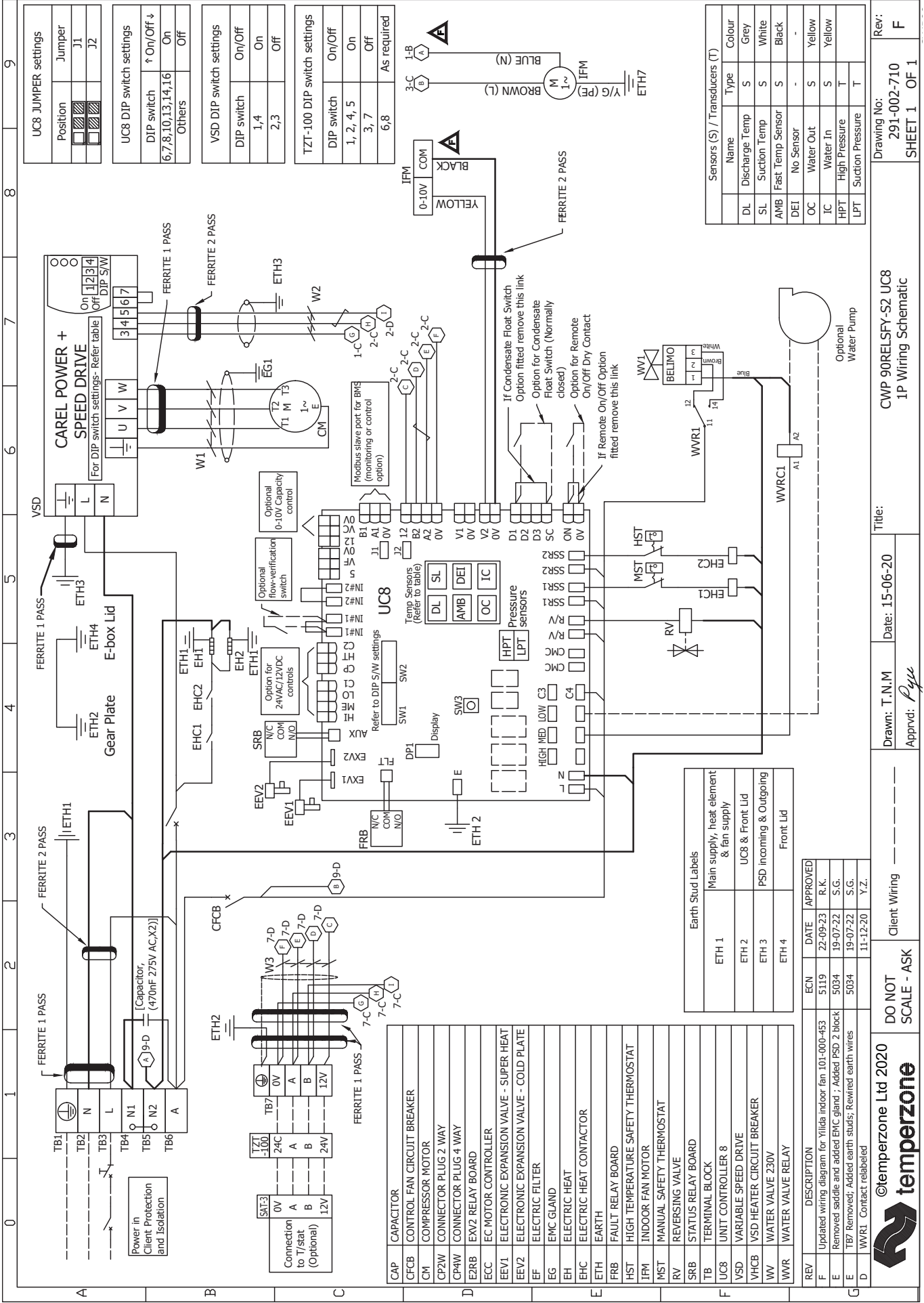
POINT LOADS (kg)			
W	X	Y	Z
28	18	24	20

Allow adequate clearance to access the front of the unit for future service and maintenance. Installed location must be ventilated at base level.



NOTE

Specifications are subject to change without notice due to the manufacturer's ongoing research and development programme.



Sensors (S) / Transducers (T)		
Name	Type	Colour
DL	Discharge Temp	Grey
SL	Suction Temp	White
AMB	Fast Temp Sensor	Black
DEI	No Sensor	-
OC	Water Out	Yellow
IC	Water In	Yellow
HPT	High Pressure	T
LPT	Suction Pressure	T

Rev: F
 Drawing No: 291-002-710
 SHEET 1 OF 1

CWP 90RELSFY-S2 UC8
 1P Wiring Schematic

Title: 15-06-20
 Drawn: T.N.M
 Date: 15-06-20
 Approved: *Pys*

DO NOT SCALE - ASK

Client Wiring
 ©temperzone Ltd 2020
temperzone

REV	DESCRIPTION	ECN	DATE	APPROVED
F	Updated wiring diagram for Yilida indoor fan 101-000-453 R.K.	5119	22-09-23	R.K.
E	Removed saddle and added EMC gland - Added PSD 2 block S.G.	5034	19-07-22	S.G.
E	TB7 Removed; Added earth studs; Rewired earth wires S.G.	5034	19-07-22	S.G.
D	WVR1 Contact relabeled		11-12-20	Y.Z.

Earth Stud Labels	Front Lid
ETH 1	Main supply, heat element & fan supply
ETH 2	UC8 & Front Lid
ETH 3	PSD incoming & Outgoing
ETH 4	Front Lid

CAP	DESCRIPTION
CFB	CONTROL FAN CIRCUIT BREAKER
CM	COMPRESSOR MOTOR
CP2W	CONNECTOR PLUG 2 WAY
CP4W	CONNECTOR PLUG 4 WAY
E2RB	EX2 RELAY BOARD
ECC	EC MOTOR CONTROLLER
EEV1	ELECTRONIC EXPANSION VALVE - SUPER HEAT
EEV2	ELECTRONIC EXPANSION VALVE - COLD PLATE
EF	ELECTRIC FILTER
EG	EMC GLAND
EH	ELECTRIC HEAT
EHC	ELECTRIC HEAT CONTACTOR
ETH	EARTH
FRB	FAULT RELAY BOARD
HST	HIGH TEMPERATURE SAFETY THERMOSTAT
IPM	INDOOR FAN MOTOR
MST	MANUAL SAFETY THERMOSTAT
RV	REVERSING VALVE
SRB	STATUS RELAY BOARD
TB	TERMINAL BLOCK
UC8	UNIT CONTROLLER 8
VSD	VARIABLE SPEED DRIVE
VHCB	VSD HEATER CIRCUIT BREAKER
WV	WATER VALVE 230V
WVR	WATER VALVE RELAY

