

| | |
|---|------------------------------------|
| Model | OPA 1710RLTM1FPQ(-Z) Econex |
| Configuration | Horizontal Supply Air |
| Item No. (Standard / Opposite Hand) | 866-171-701 / 866-171-710 |
| Unit c/w Economiser (Standard / Opposite Hand) | 867-171-701 / 867-171-710 |
| Configuration | Downward Supply Air |
| Item No. (Standard / Opposite Hand) | 866-171-723 / 866-171-732 |
| Unit c/w Economiser (Standard / Opposite Hand) | 867-171-723 / 867-171-732 |
| Cooling capacity (net) ¹ | 164.2 kW |
| Cooling capacity (gross) range | 13.9 ~ 177.2 kW |
| Heating capacity ¹ | 170.7 kW |
| Heating capacity (gross) range | 14.8 ~ 181.8 kW |
| Electrical input - cooling | 53.1 kW |
| Electrical input - heating | 50.7 kW |
| EER / AEER (cooling) ¹ | 3.09 / 3.08 |
| COP / ACOP (heating) ¹ | 3.36 / 3.35 |
| Operating Range (outdoor ambient) - cooling | -10°C ~ 50°C |
| Operating Range (outdoor ambient) - heating | -10°C ~ 25°C |
| Unit Controller | UC8 (x4) |
| Refrigerant | R32 |
| Refrigerant Charge | 7.6 kg/sys. |
| Minimum floor area (@5m below ceiling diffuser) | 7.1 m ² |
| Compressor oil type | POE-46 (NXG5020 or equivalent) |
| Compressor type | inverter (x1) + fixed scroll (x3) |
| Power supply ² | 3 ph. 400V ac 50Hz + N + E |
| Compressor (3ph.) run amps at rating cond.(inv./fixed) | 15.5 A/ph.(x1) / 18.5 A/ph.(x3) |
| Compressor circuit breaker | 32 A (x4) |
| Indoor fan motor size | EC Plug 500mm 3.58kW (x4) |
| Nominal air flow at rating conditions | 8 200 l/s (7.5V) |
| Indoor fan motor (3ph.) | 4.4 A/ph. (x4) |
| Outdoor fan motor (3ph.) - full load | 4.7 A/ph. (x4) |
| Outdoor fan motor – max. ext. static pressure available | 120 Pa (@19,600 l/s) |
| Control circuit breaker (internal) | 4 A |
| Auxiliary power outlet (1ph.) overload setting | 10 A |
| Running amps (total system) | 84 / 81 / 83 A |
| Max. running amps (total system) | 114 / 113 / 113 A |
| RCD type recommended | type B, 30mA, 3 pole |
| Net weight (excl. cowl) | 2 263 kg |
| Shipping weight (excl. cowl) | 2 323 kg |
| Net weight (c/w Economiser) | 2 353 kg |

Accessories:

| | |
|--|---|
| TZT-100 Room temperature controller ⁴ | 201-000-792 |
| Filters - rated EU4/G4 disposable | 019-400-005 600x500x50 (x12) ³ |
| Filters - rated EU4/G4 washable (NZ only) | 019-000-034 600x500x50 (x12) ³ |

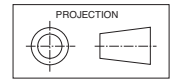
¹ Tested in accordance with AS/NZS 3823

² Voltage range: 380–440V

³ Filter sizes are nominal; refer to Temperzone for actual measurements.

⁴ Not suitable for controlling Economiser dampers

DIMENSIONS (mm)

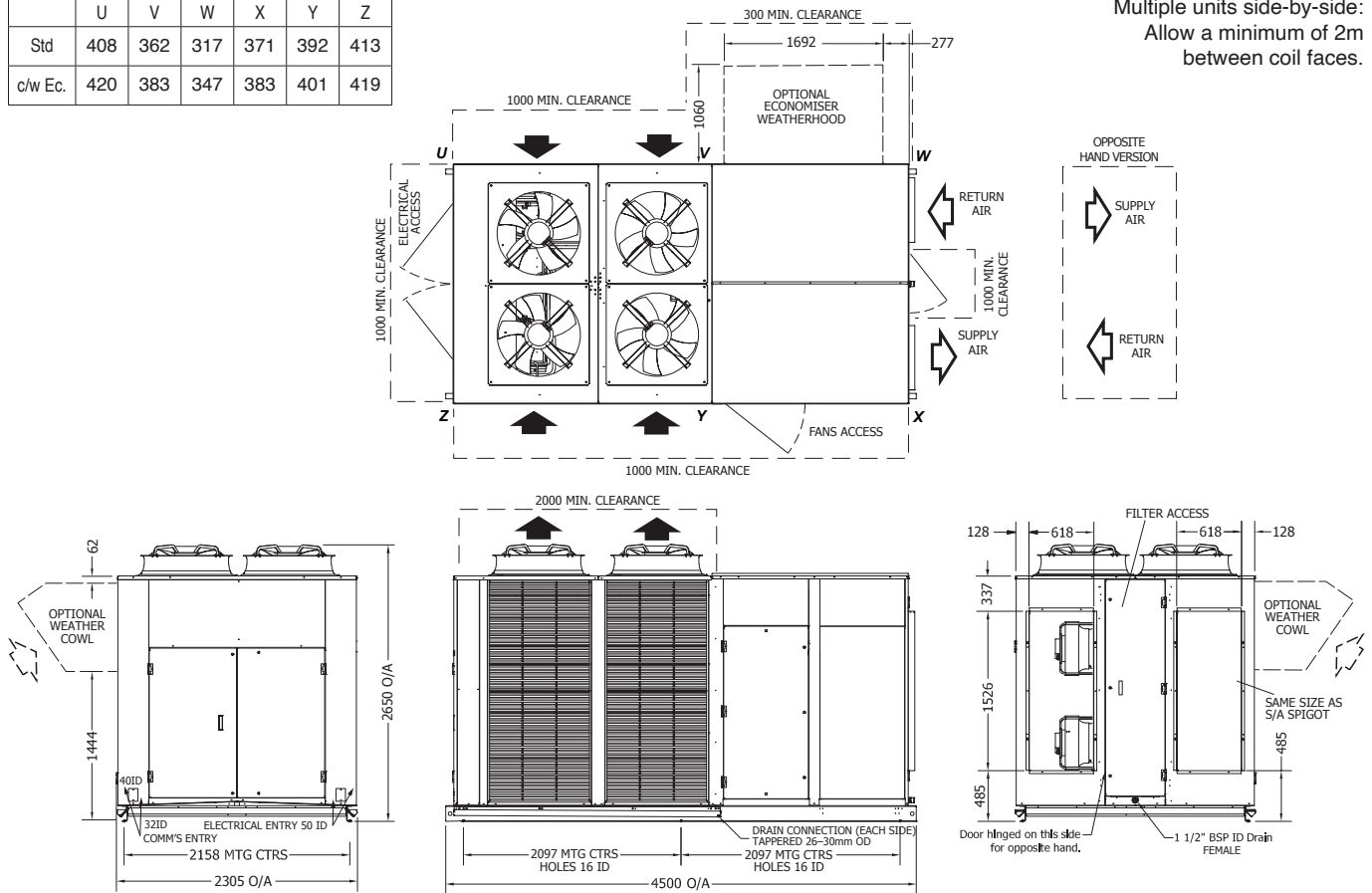


OPA 1710RLTM1FPQ01(-Z) Horizontal Supply / Standard Hand

| | POINT LOADS (kg) | | | | | |
|---------|------------------|-----|-----|-----|-----|-----|
| | U | V | W | X | Y | Z |
| Std | 408 | 362 | 317 | 371 | 392 | 413 |
| c/w Ec. | 420 | 383 | 347 | 383 | 401 | 419 |

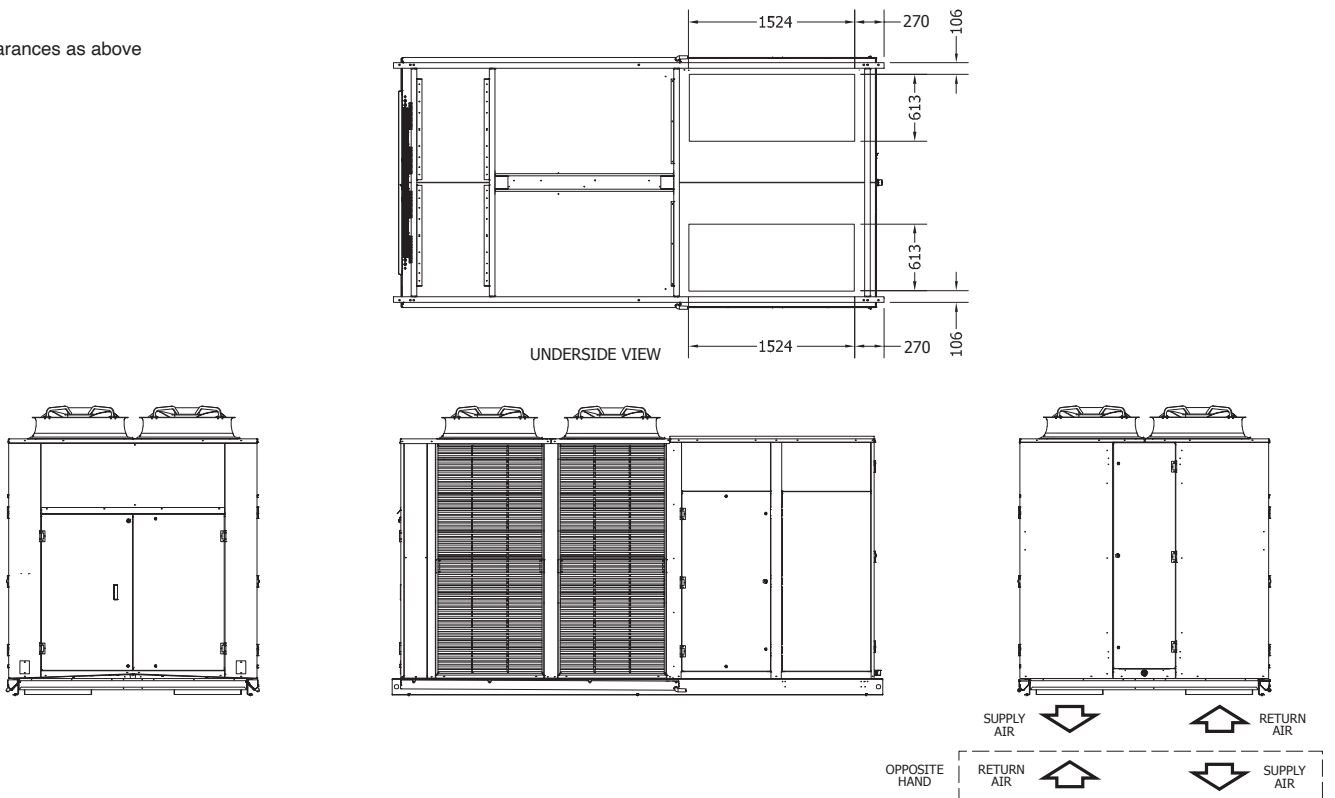
Not to Scale

Multiple units side-by-side:
Allow a minimum of 2m
between coil faces.



OPA 1710RLTM1FPQD23(-Z) Downward Supply / Standard Hand

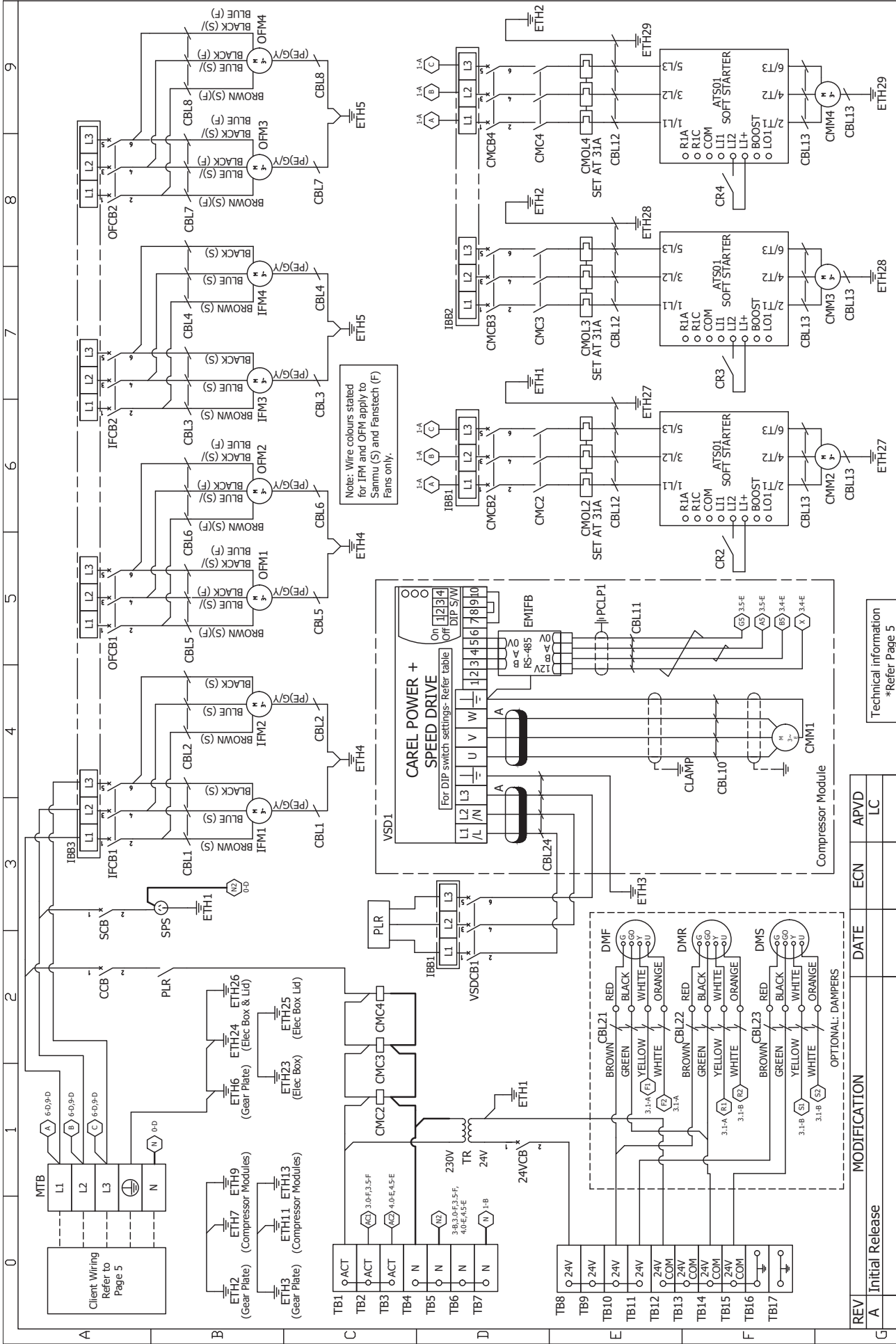
Clearances as above



NOTE

Specifications are subject to change without notice due to the manufacturer's ongoing research and development programme.

WIRING (1)



| REV | Initial Release | MODIFICATION | DATE | ECN | APVD | LC |
|-----|-----------------|--------------|------|-----|------|----|
| A | | | | | | |

Client Wiring

Technical information
*Refer Page 5

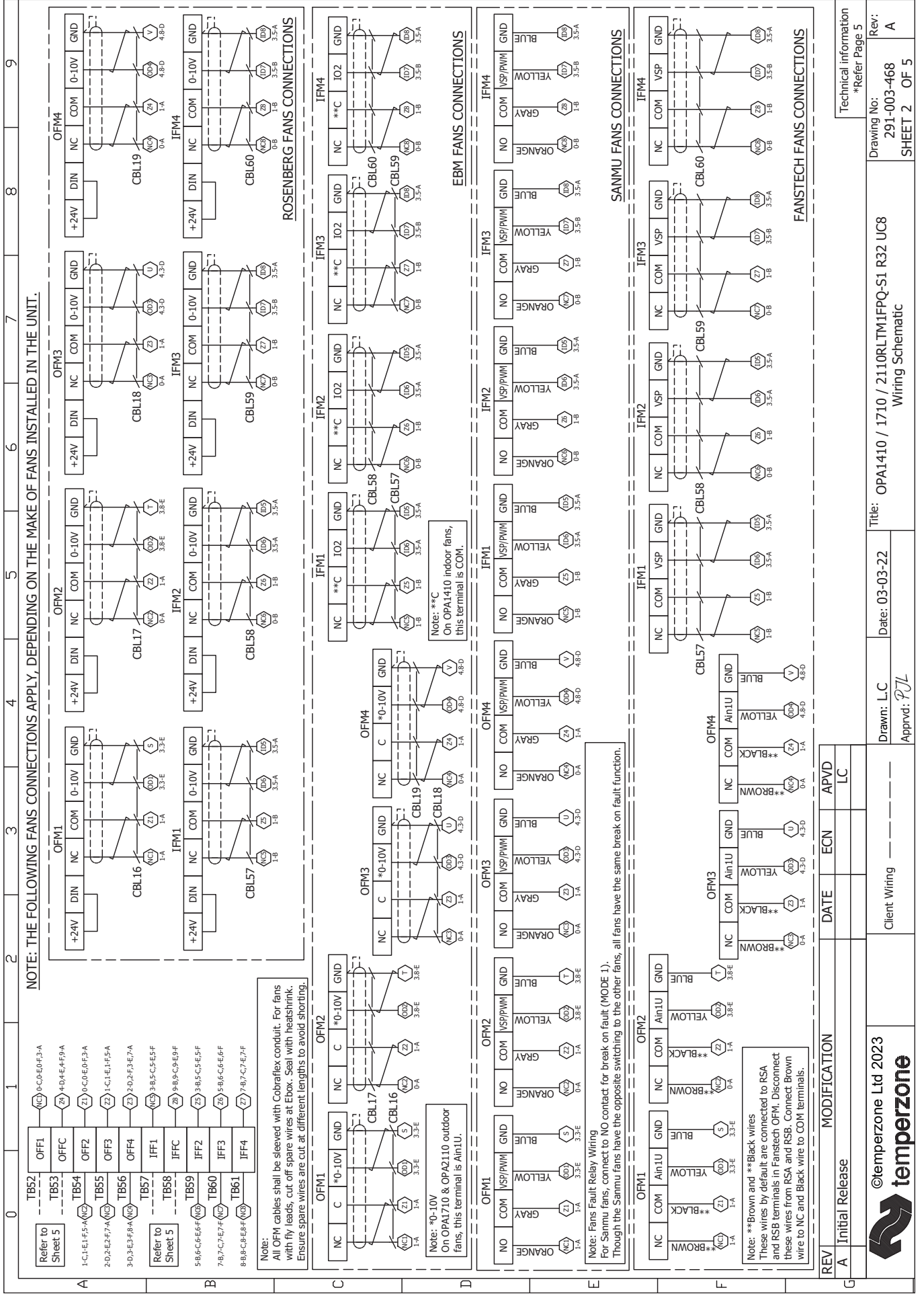
Drawn: L.C Date: 03-03-22

Approved: *PJL*

Title: OPA1410 / 1710 / 2110RLTM1FPQ-S1 R32 UC8
Wiring Schematic

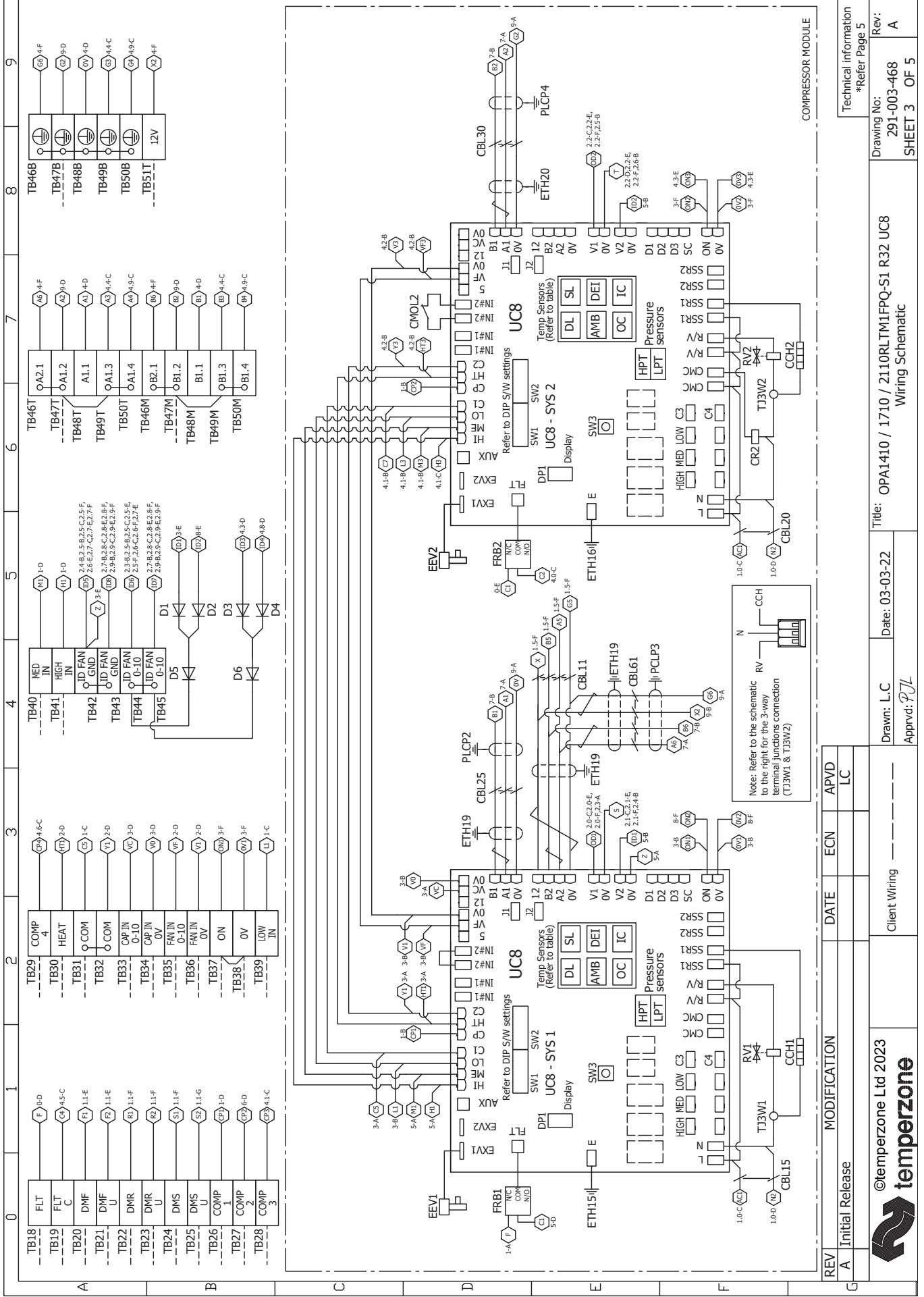
Drawing No: 291-003-468
SHEET 1 OF 5

Rev: A



©temperzone Ltd 2023

WIRING (3)



Technical information
*Refer Page 5

Rev: A

Drawing No: 291-003-468
SHEET 3 OF 5

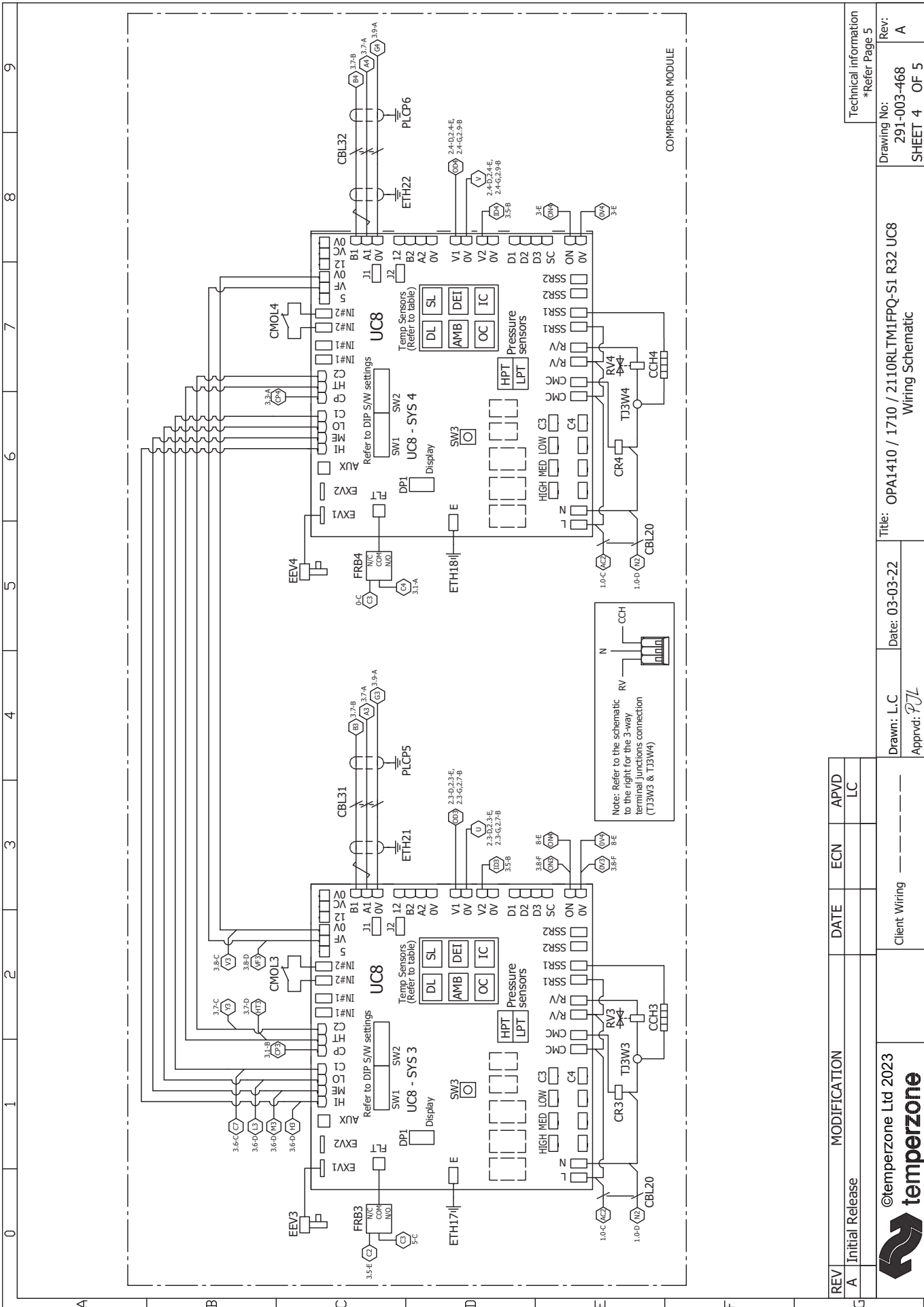
Title: OPA1410 / 1710 / 2110RLTM1FPQ-S1 R32 UC8
Wiring Schematic

Drawn: L.C
Date: 03-03-22
Apprvd: PZL

Client Wiring

©temperzone Ltd 2023





0 1 2 3 4 5 6 7 8 9

| REV | MODIFICATION | DATE | ECN | APVD |
|-----|-----------------|------|-----|------|
| A | Initial Release | | | LC |

| | | | |
|----------------------|----------------|---|--|
| ©temperzone Ltd 2023 | Client: Wiring | Title: OPA1410 / 1710 / 2110RLTM1FPQ-S1 R32 UC8 | Technical information *Refer Page 5 |
| | | Wiring Schematic | |
| | | Date: 03-03-22 | |
| | | Drawn: L.C | |
| | | Apprvd: <i>PJL</i> | |
| | | Drawing No: 291-003-468 | Rev: A |
| | | SHEET 4 | OF 5 |

