

HITACHI

—  
**air365** Max Pro  
**air365** Max

VARIABLE REFRIGERANT FLOW SYSTEM

HEAT PUMP TYPE (COMBINED WITH HEAT RECOVERY APPLICATION)

Cooling & Heating



# End-to-end solution

For HVAC professionals, architects & building owners looking for a modern HVAC solution that is cost efficient and adaptable, **air365 Max** is an end-to-end solution that's easy to work from design to installation, operation and maintenance, offering incredible energy efficiency and seamless comfort for users



## SmoothDrive technology

### airCloud Tap + NFC technology

- Gas-injection, Scroll Compressor
- Smart Defrost
- Oil-return technology
- Patented Sigma-shape with patented path structure



1

## Best-in-class efficiency

Offers significant improvements in energy consumption thanks to the higher EER & SmoothDrive technology which helps to reduce running costs during part-load operation.

This can lead to reduced CO<sub>2</sub> emissions for customers as well.

### 6 key claims

- ✓ All-new heat exchanger and gas injection scroll compressor enables best-in-class VRF energy efficiency : Cooling AEER up to 4.63 /Heating ACOP up to 4.43 (air365 Max Pro)
- ✓ **(Original)** SmoothDrive 2.0 confirmed for 39% less energy-consumption at 33% part load operation
- ✓ Uses 10% less refrigerant in average
- ✓ Demand Response Enabling Device (DRED) support through both remote controller & centralised controller
- ✓ Reduce energy consumption and carbon footprint by 47%
- ✓ Additional energy savings by transferring excess heated or cooled air to zones needing extra cooling or heating

2

## Easy to work with

A complete solution that saves time and money at every stage of your project, from Design to Maintenance.

Our complete ecosystem of indoor and outdoor units, smart apps and hardware features work together as a complete solution.

### 6 key claims

- ✓ [Design] User fewer ODUs with single unit capacity up to 24HP (air365 Max) and 200% IDU connection capacity
- ✓ [Deliver] Load up to 11% more AC capacity in a single vehicle
- ✓ [Install] **(Original)** Up to 4X faster configuration of units with airCloud Tap
- ✓ [Commission] Quicker & easier commissioning with Service Checker - get instant reports and visualize detailed operational data
- ✓ [Operate] Easy monitoring by airCloud Pro anytime anywhere
- ✓ [Maintain] **(Original)** Fast access to error data by using airCloud Tap

3

## Seamless comfort

Seamless comfort for building occupants, anywhere, anytime.

Solves common problems of HVAC solutions including unstable temperatures, cold or hot drafts, direct air, hot and cold rooms during season changes, and more.

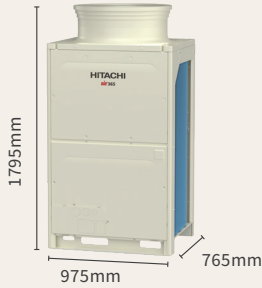
### 5 key claims

- ✓ **(Original)** Constant indoor temperature even during part-load operation with SmoothDrive 2.0
- ✓ Original & leading-edge technology including GentleCool and CrowdSense, for enhanced occupant comfort
- ✓ Neighbourhood-friendly outdoor unit with 4dB(A) lower noise output in average by Night Shift Mode in average (air365 Max Pro)
- ✓ Purifying your indoor air with our affordable IAQ solutions including ViroSense filters and the AqtiV-Ion ionizer kit
- ✓ Heat recovery systems offer simultaneous cooling and heating to meet individual needs

# Outdoor unit lineup overview

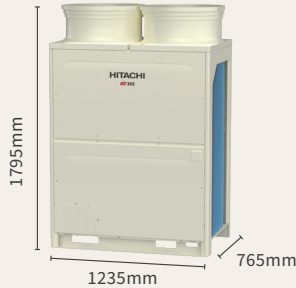
## air365 Max Pro : Cooling AEEER up to 4.63 /Heating ACOP up to 4.43

(HP Class/Cooling Capacity/Heating Capacity/Net Weight/Operating Sound SPL (Full-anechoic) dB(A) in cooling mode)



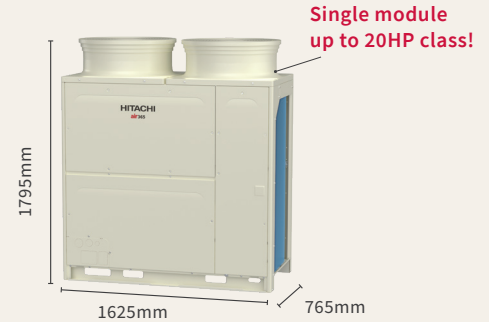
**Footprint 0.75m<sup>2</sup>**

8HP class/22.4kW/25.0kW/217kg/52dB(A)  
10HP class/28.0kW/31.5kW/217kg/55dB(A)



**Footprint 0.94m<sup>2</sup>**

12HP class/33.5kW/37.5kW/272kg/59dB(A)  
14HP class/40.0kW/45.0kW/307kg/61dB(A)  
16HP class/45.0kW/47.5kW/307kg/61dB(A)



**Footprint 1.24m<sup>2</sup>**

18HP class/50.4kW/56.0kW/350kg/62dB(A)  
20HP class/56.0kW/63.0kW/374kg/62dB(A)



**Footprint 1.71m<sup>2</sup>**

22HP class/61.5kW/69.0kW/489kg/61dB(A)



**Footprint 1.90m<sup>2</sup>**

24HP class/67.0kW/77.5kW/544kg/62dB(A)  
26HP class/73.5kW/82.5kW/579kg/63dB(A)  
28HP class/80.0kW/90.0kW/614kg/64dB(A)  
30HP class/85.0kW/92.5kW/614kg/64dB(A)  
32HP class/90.0kW/95.0kW/614kg/64dB(A)



**Footprint 2.20m<sup>2</sup>**

34HP class/95.4kW/103.5kW/657kg/65dB(A)



**Footprint 2.50m<sup>2</sup>**

36HP class/100.8kW/112.0kW/700kg/65dB(A)  
38HP class/106.4kW/119.0kW/724kg/65dB(A)  
40HP class/112.0kW/126.0kW/748kg/65dB(A)



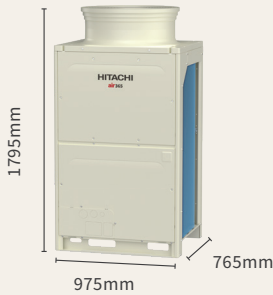
**Footprint 2.86m<sup>2</sup>**

42HP class/120.0kW/135.0kW/921kg/66dB(A)  
44HP class/125.0kW/137.5kW/921kg/66dB(A)  
46HP class/130.0kW/140.0kW/921kg/66dB(A)  
48HP class/135.0kW/142.5kW/921kg/66dB(A)

# air365 Max : Cooling AEER up to 4.53 / Heating ACOP up to 4.33

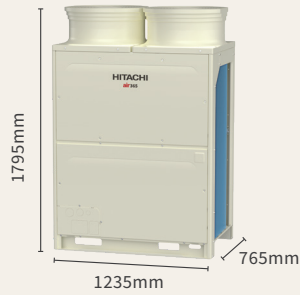
(HP Class/Cooling Capacity/Heating Capacity/Net Weight/Operating Sound SPL (Full-anechoic) dB(A) in cooling mode)

Single module up to 24HP class!



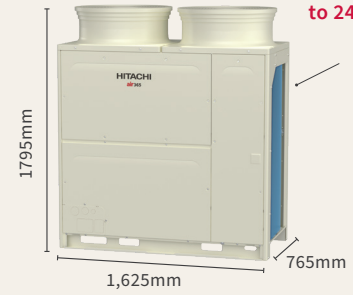
**Footprint 0.75m<sup>2</sup>**

8HP class/22.4kW/25.0kW/197kg/52dB(A)  
10HP class/28.0kW/31.5kW/203kg/55dB(A)  
12HP class/33.5kW/37.5kW/217kg/57dB(A)



**Footprint 0.94m<sup>2</sup>**

14HP class/40.0kW/45.0kW/271kg/59dB(A)  
16HP class/45.0kW/50.0kW/272kg/61dB(A)  
18HP class/50.4kW/56.0kW/272kg/61dB(A)



**Footprint 1.24m<sup>2</sup>**

20HP class/56.0kW/63.0kW/350kg/59dB(A)  
22HP class/61.5kW/69.0kW/350kg/59dB(A)  
24HP class/67.0kW/77.5kW/375kg/61dB(A)



**Footprint 1.71m<sup>2</sup>**

26HP class/73.5kW/82.5kW/488kg/61dB(A)  
28HP class/78.5kW/87.5kW/489kg/63dB(A)  
30HP class/83.9kW/93.5kW/489kg/63dB(A)



**Footprint 1.90m<sup>2</sup>**

32HP class/90.4kW/101.0kW/543kg/63dB(A)  
34HP class/95.4kW/106.0kW/544kg/64dB(A)  
36HP class/100.8kW/112.0kW/544kg/64dB(A)



**Footprint 2.20m<sup>2</sup>**

38HP class/106.5kW/119.0kW/622kg/63dB(A)  
40HP class/111.9kW/125.0kW/622kg/63dB(A)  
42HP class/117.4kW/133.5kW/647kg/64dB(A)



**Footprint 2.50m<sup>2</sup>**

44HP class/123.0kW/138.0kW/700kg/62dB(A)  
46HP class/128.5kW/146.5kW/725kg/63dB(A)  
48HP class/134.0kW/155.0kW/750kg/64dB(A)



**Footprint 2.86m<sup>2</sup>**

50HP class/140.8kW/157.0kW/815kg/65dB(A)  
52HP class/145.8kW/162.0kW/816kg/66dB(A)  
54HP class/151.2kW/168.0kW/816kg/66dB(A)

Maximum combination up to 64HP class



**Footprint 3.16m<sup>2</sup>**

56HP class/156.9kW/175.0kW/894kg/65dB(A)  
58HP class/162.3kW/181.0kW/894kg/65dB(A)  
60HP class/167.8kW/189.5kW/919kg/66dB(A)



**Footprint 3.46m<sup>2</sup>**

62HP class/173.4kW/194.0kW/972kg/65dB(A)  
64HP class/178.9kW/202.5kW/997kg/65dB(A)

# SmoothDrive™ 2.0

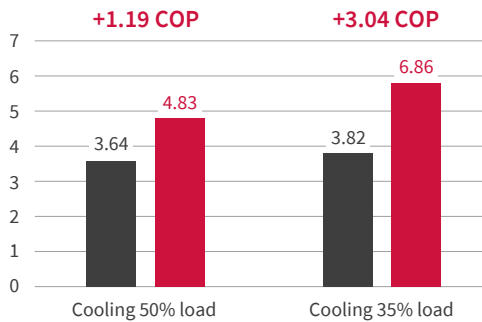
Part-load conditions cause real-world performance to deviate significantly from official published energy efficiency data. Which is why Hitachi's patented direct capacity control SmoothDrive technology delivers.



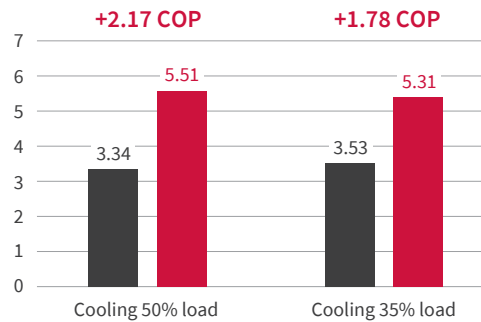
## Real-world energy efficiency\*\*

Improved energy efficiency under part-load operation, which regulatory energy efficiency ratings do not account for

### COP in Cooling mode



### COP in Heating mode



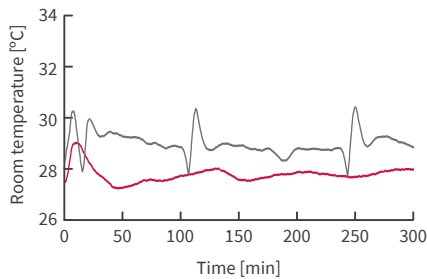
without SmoothDrive  
 with SmoothDrive  
 \* Averaged power/load are calculated for 5 hours from start  
 \* COP = Averaged load / Averaged power



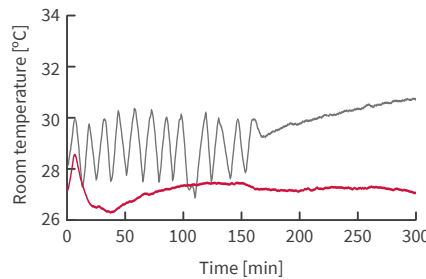
## Temperature stability\*\*

With continuous monitoring and adjustment of the capacity based on compressor speed, indoor temperatures can be maintained more accurately

### Cooling 50% Load



### Cooling 35% Load



Set temp: 27°C  
 Initial IDU temp: 27°C / 19°C  
 Air Inlet temperature of IDUs (without SmoothDrive)  
 Air Inlet temperature of IDUs (with SmoothDrive)

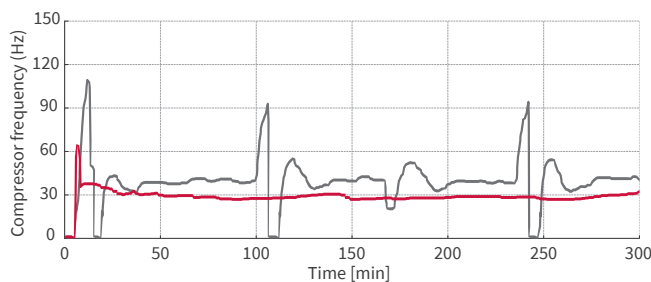


## Smoother compressor operation\*\*

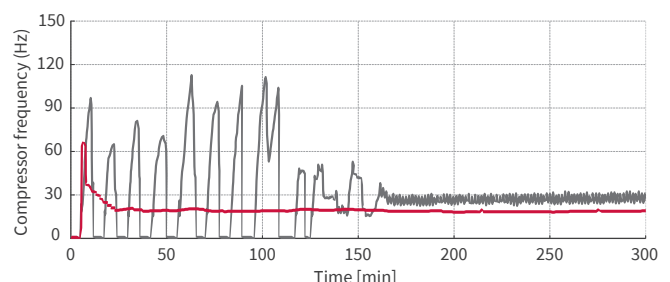
Compressor rotation frequency is more precise and stable.

On/Off cycles are reduced, while peaks and drops are diminished, reducing wear on the compressor.

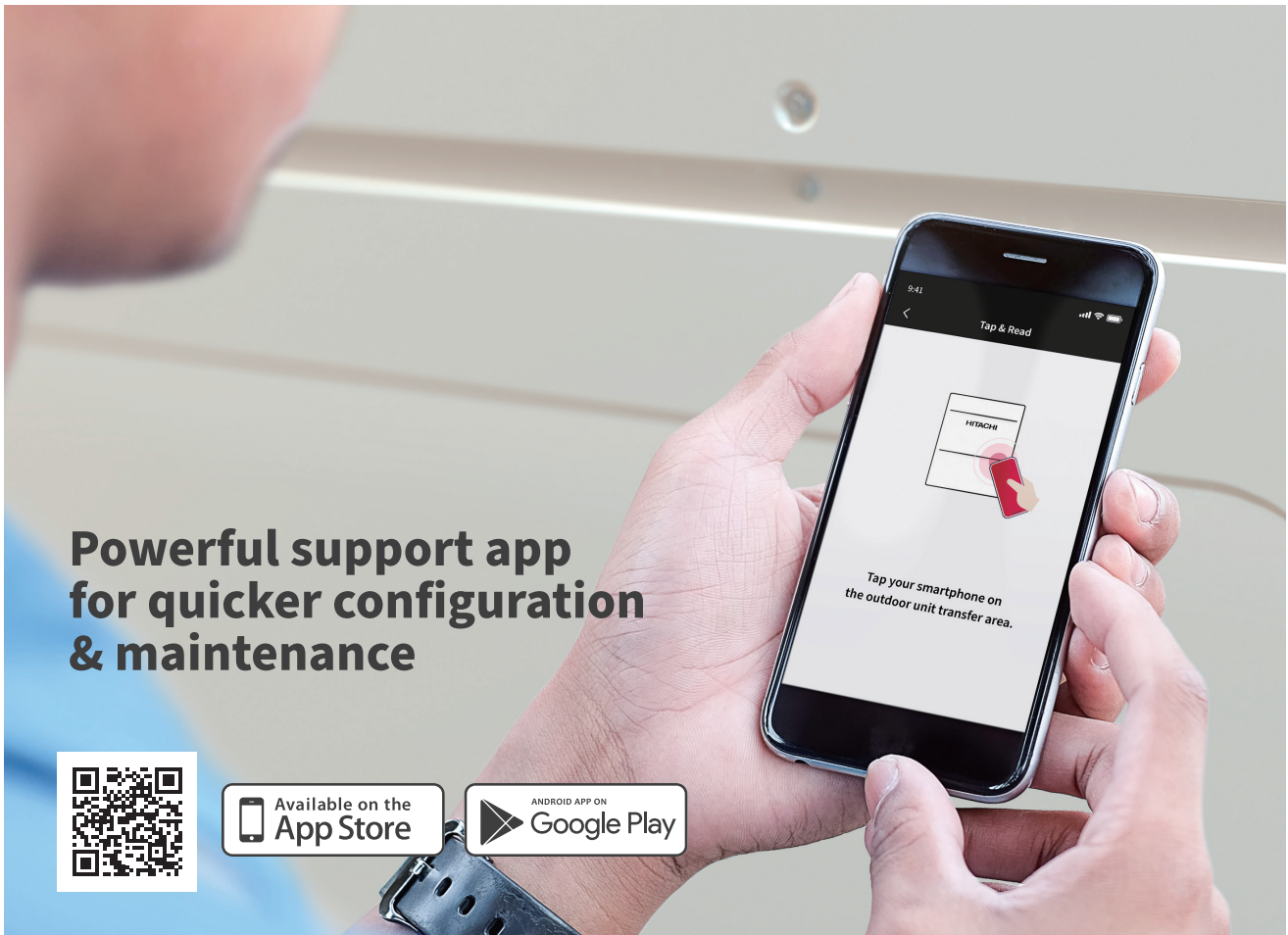
### Cooling 50% Load



### Cooling 35% Load



\*\* Outdoor Unit; 10HP class. Indoor Unit: 5HP Class 4-way cassette unit \* 2 pcs. In our own company's fixed-load testing facility(Dimension of the room per one indoor unit :5.6m×2.5m×3.1m). Outdoor temp (DB / WB): 29°C / 19°C. Load per room (Sensible / Latent): 4.9kW / 0.0kW. Set temperature: 27°C. Initial Indoor unit temperature (DB / WB) : 27°C / 19°C. Indoor unit fan airflow rate: Hi-mode.



**Powerful support app for quicker configuration & maintenance**



06

Eliminates multiple manual programming options. airCloud Tap offers an intuitive interface, enabling easy to read & modify settings with your phone.

**CONTACTLESS & QUICK**

Replaces manual configurations through your smart phone, simply tap your smart phone over the Hitachi Air Conditioner equipment to access system settings.

**FREE FOR ALL HVAC PROFESSIONALS**

The app can be downloaded through the iOS app store for iPhones or Google Play for android devices.

**HITACHI VRF UNITS: EMBEDDED WITH NFC CHIP**

Access settings and program air conditioning equipment by Near Field Communication (NFC) technology. No need to add extra accessory, your Hitachi equipment is ready for airCloud Tap.



air365 Max series  
Top-flow outdoor units



Advanced Colour controller  
PC-ARFG



Eco-Compact controller  
PC-ARCA

OUTDOOR UNITS

# Indoor unit lineup overview

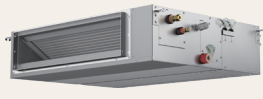
Over 18 types available!

## DUCTED | The ultimate invisibility.

**HIGH ESP (DC)**  
RPI-FSR



**MEDIUM ESP (DC)**  
RPI-M-FSR



**HIGH ESP (AC)**  
RPIH-HNAUN1Q



**HIGH ESP (DC)**  
RPIH-HNDUSQ



**COMPACT (AC)**  
RPIZ-HNATN1Q

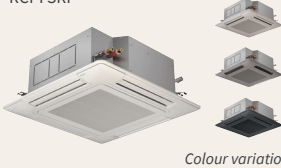


**COMPACT (DC)**  
RPIZ-HNDTS1Q



## CASSETTE | Consistent air reaching every corner of a room.

**4-WAY CASSETTE (DC)**  
RCI-FSRP



Colour variation

**4-WAY CASSETTE (DC)**  
RCI-FSKDN1Q



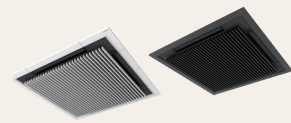
**TWIN-SENSE SYSTEM**

RCI-FSRP+ P-AP160NAE2  
RCI-FSKDN1Q+ P-AP160NAE2+OPT-EZJ01



**Silent-Ionic™  
Design Panel**

P-GP160NAP, P-GP160NAPU, P-GP160KAP



**4-WAY COMPACT  
CASSETTE (DC)**  
RCIM-FSRE



**2-WAY CASSETTE (DC)**  
RCD-FSR



**1-WAY CASSETTE (DC)**  
RCS-FSR



## OTHERS | Minimal installation or retrofit works.

**WALL MOUNTED (DC)**  
RPK-FSRM, RPK-FSRHM



**FLOOR/CEILING CONVERTIBLE (AC)**  
RPFC-FSNQ



**CEILING SUSPENDED (DC)**  
RPC-FSR



**FLOOR EXPOSED (AC)**  
RPF-FSN2E



**FLOOR CONCEALED (AC)**  
RPFI-FSN2E





# Ducted unit

## AIR CONDITIONING TURNED INVISIBLE!

Our 6 types of ducted units offer variety of ESP level, to facilitate integration into your project.



### HIGH ESP (DC) RPI-FSR

- High ESP: Up to 200Pa (2.0-6.0HP) or 230Pa (8.0HP/10HP)
- Flexible choice of air suction connection, rear or bottom
- GentleCool available, to prevent cold draft when cooling starts
- Hotel Setback available



### MEDIUM ESP (DC) RPIM-FSR

- 3 levels of ESP available: 50/100/150Pa
- Flexible choice of air suction connection, rear or bottom
- GentleCool available, to prevent cold draft when cooling starts
- Hotel Setback available.



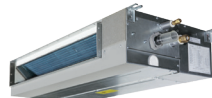
### HIGH ESP (AC) RPIH-HNAUN1Q

- High ESP (90/120/180Pa)
- Slim & space saving design thanks to a height of 300mm only
- Compatible with AQtiv-Ion Kit (Optional accessory)



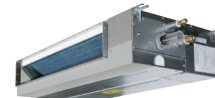
### HIGH ESP (DC) RPIH-HNDUSQ

- Single- Phase DC motor unit
- Adjustable external pressure up to 150pa
- Compatible with AQtiv-Ion Kit (Optional accessory)



### COMPACT (AC) RPIZ-HNATN1Q

- 192mm height is ideal for installations above closets or windows
- Drain-pump with 900mm lift as standard optional part
- Quiet noise level down to 20dB(A)
- Compatible with AQtiv-Ion Kit (Optional accessory)



### COMPACT (DC) RPIZ-HNDTS1Q

- 192mm height is ideal for installations above closets or windows.
- Drain-pump with 900mm lift as standard optional part
- Quiet noise level down to 20dB(A)
- Fan speed: 6 taps available
- Compatible with AQtiv-Ion Kit (Optional accessory)

## FROM 2.2KW TO 28KW

Ducted indoor units	Cooling (kW)	2.2	2.8	3.6	4.0	4.3	5.0	5.6	6.3	7.1	8.0	8.4	9.0	11.2	14.0	14.2	16.0	18.0	22.4	28.0
<b>HIGH ESP (DC)</b> RPI-FSR								●		●	●			●	●		●		●	●
<b>MEDIUM ESP (DC)</b> RPIM-FSR		●	●		●			●		●	●			●	●		●			
<b>HIGH ESP (AC)</b> RPIH-HNAUN1Q												●	●	●		●	●		●	●
<b>HIGH ESP (DC)</b> RPIH-HNDUSQ																			●	●
<b>COMPACT (AC)</b> RPIZ-HNATN1Q		●	●	●	●		●	●	●	●										
<b>COMPACT (DC)</b> RPIZ-HNDTS1Q		●	●	●	●		●	●	●	●										

# Ceiling cassettes

## PREMIUM DESIGN & INNOVATIVE FEATURES

Hitachi commercial Cassette systems provide optimal cooling performance, equipped with intelligent features like temperature control, energy-saving modes, and quiet operation.



Twin-Sense panel  
P-AP160NAE2

### 4-WAY CASSETTE (DC)

RCI-FSRP

with Twin-Sense panel (P-AP160NAE2)

- Greater performance & Greater comfort can be achieved

with Silent-Iconic Design Panel (P-GP160NAP)

- Award-winning Silent-Iconic™ to fit your indoor aesthetics
- Black Silent-Iconic™ & Gray/Beige standard panel available

with Silent Iconic elevation grille P-GP160NAPU

- Optimise your service & maintenance time with the auto elevation grille
- Compatible with ViroSense Z2 filter
- ViroSense S filter as standard

Silent-Iconic™



P-GP160NAP,  
P-GP160KAP

Colour variation (RCI-FSRP)



Silent-Iconic™ with elevation grille



P-GP160NAPU



Twin-Sense panel  
P-AP160NAE2

### 4-WAY CASSETTE (DC)

RCI-FSKDN1Q

- With area of air distribution with 7 directions of louvres (distribution with distance available with optional parts (duct flange))
- Individual 4-way louvres provide greater comfort for individual users
- Ideal for a higher ceiling location for installation (up to 5.5m in cooling mode)
- Setback temperature control available, leading to better operation.
- GentleCool control to ensure you are not bothered by cold draft
- Compatible with ViroSense Z2 filter
- ViroSense S filter as standard



### 4-WAY COMPACT CASSETTE (DC)

RCIM-FSRE

- Provides greater design flexibility as the dimensions fit 600mm×600mm architectural module ceiling specifications
- Quiet operation level (as low as 24.5dB(A))
- Wide range of air flow rate ideal for high ceiling installation with 4.6m air blow down in cooling mode
- Setback temperature control available, leading to better operation.
- Motion sensor available for better energy saving operation
- GentleCool control to ensure you are not bothered by cold draft



### 2-WAY CASSETTE (DC)

RCD-FSR

- Motion sensor available for better energy saving operation
- Ideal for a higher ceiling location for installation (up to 4.6m in cooling mode)
- Individually operated louvres give room occupants more comfort
- Quiet operation level (as low as 27dB(A))
- Setback temperature control available, leading to better operation.
- GentleCool control to ensure you are not bothered by cold draft
- ViroSense S filter



### 1-WAY CASSETTE (DC)

RCS-FSR

- Motion sensor available for better energy saving operation
- Optimum air flow conditions are created by either downward air discharge or frontal air discharge (via optional grille) or a combination of both
- Quiet operation level (as low as 27dB(A))
- Setback temperature control available, leading to better operation
- GentleCool control to ensure you are not bothered by cold draft
- ViroSense S filter

## FROM 1.6KW TO 16KW

Ceiling Cassettes	Cooling (kW)	1.6	2.2	2.8	4.0	5.6	6.3	7.1	8.0	11.2	14.0	16.0
<b>4-WAY CASSETTE (DC)</b> RCI-FSRP				●	●	●		●	●	●	●	●
<b>4-WAY CASSETTE (DC)</b> RCI-FSKDN1Q				●	●	●	●	●	●	●	●	●
<b>4-WAY COMPACT CASSETTE (DC)</b> RCIM-FSRE		●	●	●	●	●		●				
<b>2-WAY CASSETTE (DC)</b> RCD-FSR			●	●	●	●		●	●	●	●	●
<b>1-WAY CASSETTE (DC)</b> RCS-FSR			●	●	●	●		●	●			

# Concealed & Exposed indoor unit

## WIDE RANGE OF MODELS FOR MINIMAL INSTALLATION WORKS

Hitachi VRF range offers our widest choice of indoor units to give you the versatility to complement any interior.



**WALL MOUNTED (DC)**  
RPK-FSRM, PRK-FSRHM

- Simple installation procedure
- Flexible discreet design suitable for any interior
- Setback temperature control available, leading to better operation
- GentleCool control to ensure you are not bothered by cold draft



**FLOOR/CEILING CONVERTIBLE (AC)**  
RPFC-FSNQ

- Can be floor mounted or ceiling suspended
- Easy installation
- Fresh air-intake design



**CEILING SUSPENDED (DC)**  
RPC-FSR

- Ideal for a higher ceiling (up to 5.6m in cooling)
- Better power-saving with optional Motion Sensor
- Quiet operation level (as low as 28dB(A))
- Setback temperature control available, leading to better operation
- GentleCool control to ensure you are not bothered by cold draft
- ViroSense S filter



**FLOOR EXPOSED (AC)**  
RPF-FSN2E

- Easy installation
- Space saving slim unit (220mm depth)
- 630mm height only, ideal for under-the-window installation



**FLOOR CONCEALED (AC)**  
RPFI-FSN2E

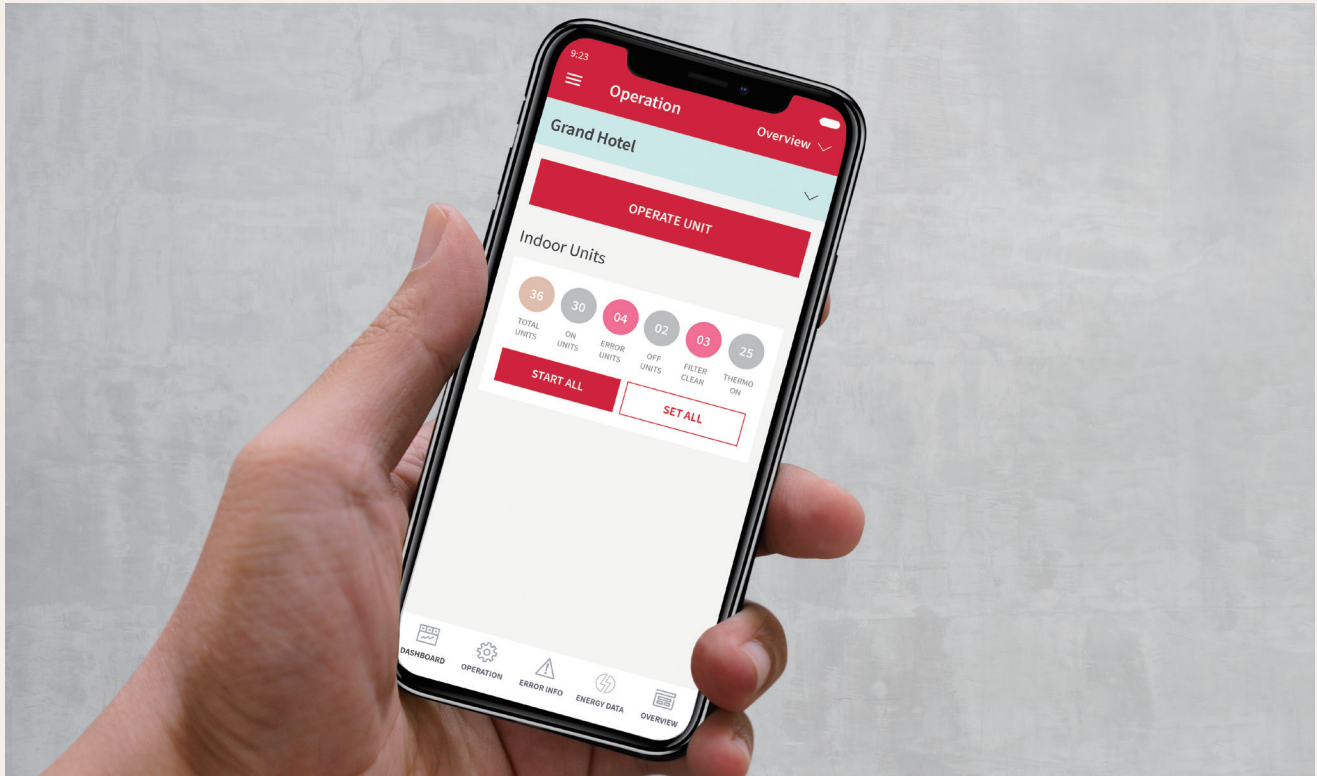
- Ideal for spaces without ceiling plenum, can be visually hidden in floor cavities & along the walls
- Space saving slim unit (only 202/220mm deep)
- Only 620mm high, ideal for under-the-window installation

## FROM 1.7KW TO 16KW

Concealed & Exposed Indoor Units		Cooling (kW)	1.7	2.2	2.8	3.6	4.0	4.3	5.0	5.6	6.3	7.1	8.0	8.4	9.0	11.2	14.0	14.2	16.0
<b>WALL MOUNTED (DC)</b> RPK-FSRM, RPK-FSRHM			•	•	•		•			•		•	•			•			
<b>FLOOR / CEILING CONVERTIBLE (AC)</b> RPFC-FSNQ									•	•	•	•		•	•	•		•	
<b>CEILING SUSPENDED (DC)</b> RPC-FSR							•			•		•	•			•	•		•
<b>FLOOR EXPOSED (AC)</b> RPF-FSN2E					•		•			•		•							
<b>FLOOR CONCEALED (AC)</b> RPFI-FSN2E					•		•			•		•							

# Centralised Controllers

Control each indoor unit individually, one specific zone or even multiple systems from one location!



**airCloud** Pro HC-IoTGW



- Remote access via smartphone app or web
- Unlimited number of systems, zones and users
- Intuitive scheduling function
- Troubleshooting with access to error history and alerts
- Filter sign display to quickly overview daily maintenance needs
- Ideal for all types of applications

## CENTRAL STATION EX PSC-A128EX3

- Control capacity: max 2,560 indoor units (+15x Extension Adapter PSC-AD128EX3)
- With energy calculation software (PSC-AS01EXC), determine each tenant's energy usage
- Easy monitoring with simplified interface
- Best option for middle-large size buildings
- Remote access! Operate Central Station EX from your laptop PC or touch-panel PC

## CENTRAL STATION EZ PSC-A64GT

- Control capacity: max 64 remote control group of indoor units
- Compact and optimised 170x250mm body screens fitting in even small walls
- Easy monitoring with simplified interface
- Ideal for middle sized buildings

## CENTRAL STATION MINI PSC-A32MN

- Control capacity: max 32 remote control group of indoor units
- Compact and optimised 120x140mm body screens fitting in even small walls
- Easy monitoring with simplified interface
- Ideal for small sized buildings

## SMALL TO LARGE SYSTEMS & FIXED OR CLOUD-BASED



		HC-IoTGW	PSC-A128EX3	PSC-A64GT	PSC-A32MN	
Capacity Comparison	Total Connection capacity	RC group	64 (*6)	2,560 (*1)	64	32
		Group	64 (*6)	2,048 (*1)	64	32
		Block	Unlimited (*7)	512 (*2)	4	2/4/8/16
		Area	Unlimited (*7)	512 (*2)	-	-
		Indoor unit	80 (*6)	2,560 (*1)	160	160
		Outdoor unit	16 (*6)	1,024 (*1)	64	64
	Building scale		Small to Large	Large	Medium	Small
Operation		Web + Mobile Phone	Touch screen + Web (New!)	Touch screen	Touch screen	
Display	Operation panel size options	Adaptive	7	2	3	
	Layout	-	●	-	-	
	List options	-	3	-	-	
Operation unit	All together	●	●	●	●	
	By layout	-	●	-	-	
	By area	●	●	-	-	
	By block	●	●	●	●	
	By group	●	●	-	-	
	By RC group	-	-	●	●	
	By indoor unit	●	●	-	-	
Control Functions	Main 5 functions (*5)	●	●	●	●	
	Individual controller lock	●	●	Δ (*3)	●	
	Filter sign reset	●	●	●	●	
	Outdoor unit capacity control	-	●	-	Δ (*4)	
	Outdoor unit noise control	-	●	-	-	
Monitor Functions	Main 5 functions (*5)	●	●	●	●	
	Individual controller lock	●	●	●	●	
	Alarm status & code	●	●	●	●	
	Filter sign	●	●	●	●	
	Air inlet temperature of indoor unit	-	●	-	●	
	Air inlet temperature of outdoor unit	-	●	-	●	
Schedule Functions	Weekly	●	●	●	-	
	Setting times per day	16	16	10	10	
	Special day setting	5	5	-	-	
	Holiday setting	-	●	-	-	
	Annual/Summer/Winter schedule	Future Version	●	-	-	
Other Functions	Alarm history (records number)	Unlimited	10,000	100	100	
	External in/output history	-	1,000	-	-	
	Management report visualisation(*11)	Energy Estimation (*8) - Future	●	●	●	
	Data output by external media	Download from Web - Future	SD card, USB flash device	-	-	
	Individual WRC clock synchronisation	-	●	-	-	
IoT Functions	Connectivity	Ethernet + 4G (*9)	-	-	-	
	Future Extendability	Firmware OTA (*10) Web + Mobile Update	-	-	-	

(\*1) One Extension Adapter (PSC-AD128EX3) enable CENTRAL STATION EX to control additional 160 RC groups /128 groups / 160 IDUs / 64 ODU's, and up to 15 adapters can connect to one Central Station EX.

(\*2) No restriction on the number of H-LINK.

(\*3) Individual Feature Control in Each Remote Controller is not available.

(\*4) Applicable only with Schedule function or external signal input. You cannot set it up directly from monitoring panel.

(\*5) Main 5 functions meaning: 1) Run/Stop 2) Operation mode 3) Temperature setting 4) Fan speed 5) Louvre control.

(\*6) Ability to connect unlimited number of "HC-IoTGW" in one project and control all AC units via one single screen on Web or Mobile Phone.

(\*7) Unlimited creation of zones, across multiple "HC-IoTGW" units within the same project. (\*8) Visualization of outdoor unit energy consumption.

(\*9) 4G available through optional 4G module; 4G module package comes with global SIM and pre-paid global data plan.

(\*10) OTA: Over-the-air firmware update, provides always up-to-date firmware and latest functionalities.

(\*11) Mini, EZ: Accumulated operation time ( min ), Accumulated thermo - ON ( min ).

EX: Accumulated operation time ( min ), Accumulated thermo - ON time ( min ), Average air intake temperature of indoor unit, Average air intake temperature of outdoor unit, Average setting temperature, Average RC sensor temperature.

# Individual controllers

## A new generation of room controller now available!

The user experience of our latest controls has become more intuitive and stylish than ever

NEW

### ADVANCED-COLOUR CONTROLLER (PC-ARFG2-Z)



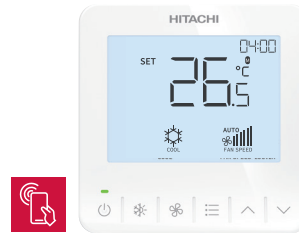
#### The award winning control solution

- Coloured screen displaying visual charts and descriptive texts
- Access to all existing Hitachi VRF indoor unit features including user features settings, installation & maintenance settings.
- Energy consumption monitoring
- Ideal for indoor units with motion sensors, cassettes with elevating grilles
- Multiple languages available

*\*Except Sleep Mode timer*

NEW

### ECO-COMPACT CONTROLLER (PC-ARCA)



#### Value without compromise

- Segment screen displaying pictograms
- Essential controls in a glimpse
- On/Off weekly schedule
- Additional advanced features such as: GentleCool, Power-Saving Peak-Cut mode and Sleep Mode Timer
- Embedded IR receiver, ideal for ducted units

## Controls from anywhere in the room

### ADVANCED WIRELESS REMOTE CONTROLLER (PC-AWR)



- Wireless remote controller with more features
- Several temperature units and settings available; 0.5°C/1.0°C/1.0°F
- Ideal for controlling the unit from anywhere in the room e.g. residential spaces

### WIRELESS REMOTE CONTROLLER (PC-LH8QE)



- Budget option featuring primary control settings
- 1.0°C temperature step
- Ideal for visitors to control the unit from anywhere in the room e.g. hotel room

# FROM BASIC TO ADVANCED CONTROLS

Advanced Colour Controller



NEW! PC-ARFG2-Z

Eco Compact Controller



NEW! PC-ARCA

Advanced Wireless Remote Controller



PC-AWR

Wireless Remote Controller



PC-LH8QE

Connection Capacity	No of RC-Group	1	1	-	-
	No of indoor units	16	16	-	-
Product Size	Width*Height*Depth (mm)	120*120*16.5 (D: thinnest part)	90*90*15.5 (D: thinnest part)	140*55*16.8	140*52*19.3
Screen		Colour LCD with backlight	Segment LCD with backlight	Segment LCD with backlight	Segment LCD with backlight
Embedded IR receiver		-	●	-	-
Smartphone App	Use With airCloud Tap	● (support NFC)	● (support NFC)	-	-
Essential Operations	Run / Stop	●	●	●	●
	Operation Mode	●	●	●	●
	Auto Mode Setting	●	●	●	●
	Temperature Setting	●	●	●	●
	Fan Speed	●	●	●	●
	Louvre Direction	●	●	●	●
Advanced Feature Settings	Simple Timer	●	● (On/Off Timer)	● (On/Off Timer)	● (On/Off Timer)
	Weekly Operation Schedule	●	●	-	-
	Power Savings Setting	●	● (Capacity Control only)	-	-
	Night Quiet Operation	●	-	-	-
	Power Savings/Night Quiet Schedule	●	-	-	-
	Power Consumption Display	●	-	-	-
	AutoBoost	●	●	-	-
	Comfort Setting	●	● (GentleCool only)	-	-
	Sleep Mode	-	●	-	-
	Motion Sensor Setting (1)	●	-	-	-
	Setback Setting	●	-	-	-
	Elevating Grille	●	-	-	-
	Filter Reminder Time Reset	●	●	●	●
	Filter Auto-Cleaning (1)	●	-	-	-
	Individual Louvre Setting	●	●	-	-
	Louvre Open/Close	●	-	-	-
	Ventilation	●	-	-	-
	Total Heat Exchanger SET	●	-	-	-
Display Settings	Adjusting Date/Time	●	●	-	-
	Daylight Saving Time	●	-	-	-
	Run Indicator Brightness Adjustment	●	● (Only On/Off setting)	-	-
	Display Adjustment	●	-	-	-
	Temperature Units (°C/°F)	●	●	●	- (°C only)
	Temperature setting at 0.5°C step	●	●	●	- (1.0°C only)
	Room Temperature Display	●	●	-	-
	Language available	EN, JPN,CN (traditional & simplified),FR, ES,PT	EN	EN	EN
Service Functions	Keypad Touch Sound	●	●	-	-
	Lock Function	●	● (Lock function individually)	-	-
	Password Setting	●	-	-	-
	Hotel Mode	●	-	-	-
	Power Saving Details Setting	●	-	-	-
	Temperature Range Restriction	●	● (in Function Selection)	-	-
	Dual Setpoint	●	-	-	-
	Main/Sub Display	●	-	-	-
	Set Room Name	●	-	-	-
	Set Contact Information	●	-	-	-
Installation Functions	NFC Setting	●	●	-	-
	Simple Maintenance Check Menu	●	-	-	-
	Test Run	●	●	-	-
	Function Selection	●	●	-	-
	Thermistor Selection	●	● (in Function Selection)	-	-
	Input/Output	●	●	-	-
	Thermistor Calibration in Controller	●	● (in Function Selection)	-	-
	Fan Speed At Thermo-Off	●	● (in Function Selection)	-	-
	Indoor Unit Address Change	●	●	-	-
	Address Check Operation	●	-	-	-
	Address Initialization	●	-	-	-
	Setting Initialization	●	●	-	-
	Main/Sub Controller Setting	●	●	-	-
	Priority Setting	●	-	-	-
	Cancel Preheating Control	●	-	-	-
Check Menu	Elevating Grille Setting	●	-	-	-
	Power Up Setting	●	-	-	-
	Setback Trigger Unit	●	-	-	-
	Refrigerant Leak Sensor Setting	●	-	-	-
	Check 1	●	●	-	-
	Check 2	●	●	-	-
Other features	Alarm History Display	●	●	-	-
	Display Model Number	●	-	-	-
	Check PCB of the Units	●	-	-	-
	Self Check	●	-	-	-
	Synchronise Date/time with Central Controller	●	●	-	-
	Stop operation delay	●	●	-	-
	Emergency operation	●	●	-	-
Two WRC Control	●	●	-	-	
Alarm Display	●	●	-	-	
Filter cleaning reminder display	●	●	-	-	

(\*1) Available when the controller is connected with selected indoor unit offering this feature.



## Temperzone Australia Pty Ltd

### ENQUIRIES

ausales@temperzone.com  
nzsales@temperzone.com

### AUSTRALIA

Sydney: (02) 8822 5700  
Melbourne: (03) 8769 7600  
Brisbane: (07) 3308 8333  
Adelaide: (08) 8115 2111

### DISTRIBUTORS

Newcastle: (02) 4962 1155  
Perth: (08) 6399 5900  
Launceston: (03) 6331 4209

### NEW ZEALAND

Auckland: (09) 279 5250  
Hamilton: (07) 839 2705  
Wellington: (04) 569 3262  
Christchurch: (03) 379 3216

[hitachiaircon.com.au](http://hitachiaircon.com.au)  
[hitachiaircon.co.nz](http://hitachiaircon.co.nz)



Due to ongoing product development and improvements, the specifications, designs and information conveyed in this brochure are subject to change without notice. Unit colours shown are as close as possible to actual unit. The information contained in this catalogue is merely informative. Hitachi Cooling & Heating declines any responsibility in the broadest sense, for damage, direct or indirect, arising from the use and / or interpretation of the recommendations in this catalogue.