

# SPECIFICATIONS



<b>Model</b>	<b>CWP 90RELSFY-S3</b>
Item No.	573-009-002
Cooling capacity (net) *	9.9 kW
Cooling capacity range (gross)	4.1 kW ~ 10 kW
Heating capacity *	8.9 kW
Heating capacity range	3.7 kW ~ 8.9 kW
Supplementary Electric Heat	3.0 kW
Electrical input - cooling	2.6 kW
Electrical input - heating (reverse cycle)	2.4 kW
EER / AEER (cooling) *	3.80 / 3.74
COP / ACOP (heating) *	3.69 / 3.63
Unit Controller	UC8
Refrigerant	R32
Refrigerant charge	0.9 kg
Minimum floor area (@2.4m below ceiling diffuser)	1.6 m <sup>2</sup>
Compressor type	inverter scroll
Water connections	3/4" male BSP
Nominal EWT on cooling	30°C
Nominal EWT on heating	20°C
Nominal Water Flow @ EWT – LWT = 5k	0.6 l/s
Entering system pressure drop @ nominal flow	62 kPa (9 psi)
Min. water temp. Heat cycle at nominal flow	10°C
Min. water temp. Cool cycle at nominal flow	15°C
Min. water temp. Cool cycle with water regulating valve	5°C
Max. EWT Heat cycle at nominal flow	30°C
Max. EWT Cool cycle at nominal flow	50°C
Min. water flow @ nominal EWT	0.17 l/s
Max. water pressure – excluding hoses	3200 kPa (464 psi)
Power supply **	1ph. 230V ac 50Hz + N + E
Compressor run amps at rating cond.*	10.5 A
Indoor fan motor size	500 W (EC)
Nominal airflow at rating conditions	375 l/s
Indoor fan motor (1ph.) - full load	4 A
Control circuit breaker (internal)	10 A
Running amps (total system)	11 A
Max. running amps (total system, incl.elec heat)	15.5 A
RCD type recommended	type F, 30mA, 1 pole
Net weight (excl. water)	90 kg

**Accessories:**

Water hoses 600mm long, rated 1720 kPa (250psi)	3/4" female BSP, optional
Replacement filter - rated EU2/G2	119-000-087 387x405x13

**Optional:**

TZT-100 Room temperature controller	201-000-350
-------------------------------------	-------------

Refer to temperzone for other options, eg remote sensors

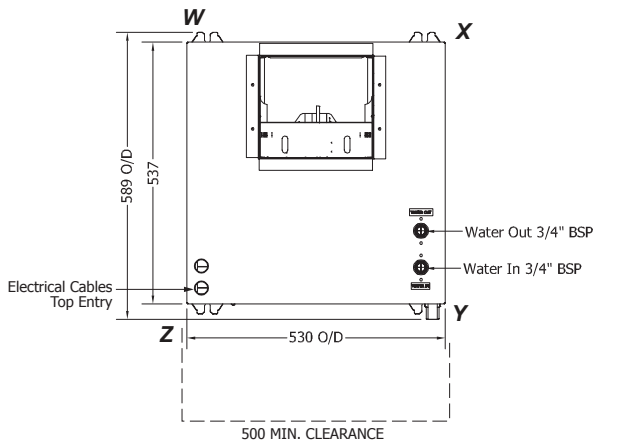
\* Tested in accordance with AS/NZS 3823

\*\* Voltage range: 216–253V



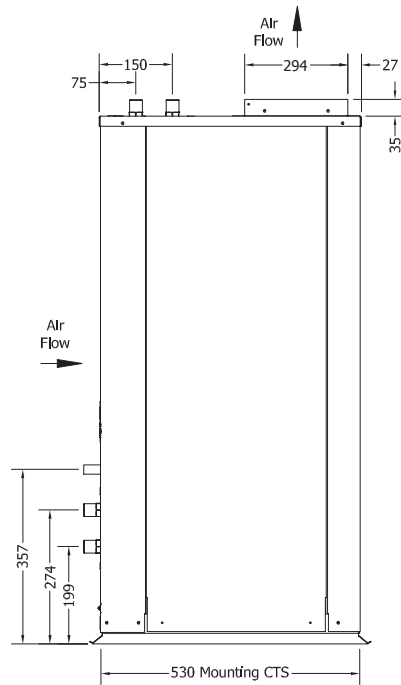
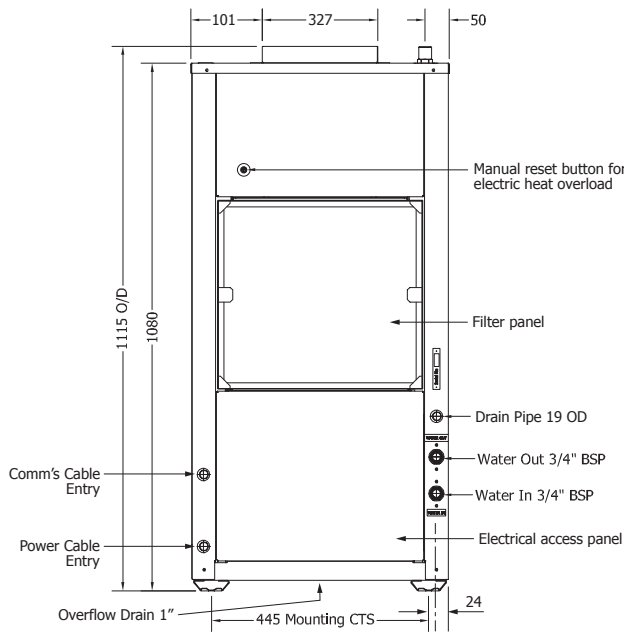
Not to Scale

**CWP 90RELSFY-S3 Standard**



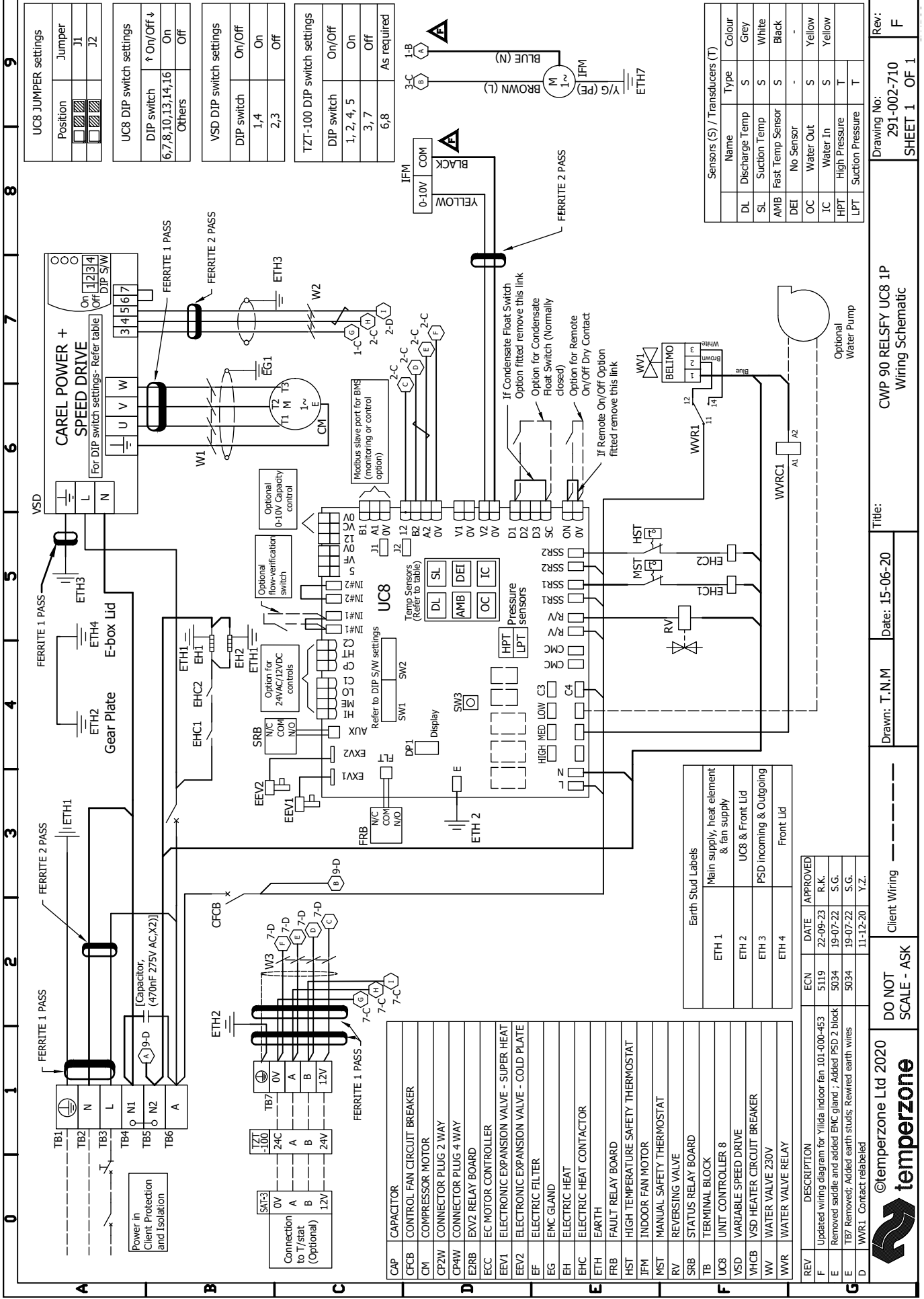
POINT LOADS (kg)			
W	X	Y	Z
28	18	24	20

Allow adequate clearance to access the front of the unit for future service and maintenance. Installed location must be ventilated at base level.



**NOTE**

Specifications are subject to change without notice due to the manufacturer's ongoing research and development programme.



0 1 2 3 4 5 6 7 8 9

**UC8 JUMPER settings**

Position	Jumper
J1	On
J2	Off

**UC8 DIP switch settings**

DIP switch	On/Off
6,7,8,10,13,14,16	On
Others	Off

**VSD DIP switch settings**

DIP switch	On/Off
1,4	On
2,3	Off

**TZT-100 DIP switch settings**

DIP switch	On/Off
1,2,4,5	On
3,7	Off
6,8	As required

**Sensors (S) / Transducers (T)**

Name	Type	Colour
DL	Discharge Temp	S
SL	Suction Temp	S
AMB	Fast Temp Sensor	S
DEI	No Sensor	-
OC	Water Out	S
IC	Water In	S
HPT	High Pressure	T
LPT	Suction Pressure	T

Rev: 291-002-710  
 Drawing No: 291-002-710  
 SHEET 1 OF 1

Drawn: T.N.M  
 Date: 15-06-20  
 Title: CWP 90 RELSIFY UC8 1P Wiring Schematic

DO NOT SCALE - ASK  
 Client Wiring

©temperzone Ltd 2020  
**temperzone**

**Earth Stud Labels**

Label	Description
ETH 1	Main supply, heat element & fan supply
ETH 2	UC8 & Front Lid
ETH 3	PSD Incoming & Outgoing
ETH 4	Front Lid

REV	DESCRIPTION	ECN	DATE	APPROVED
F	Updated wiring diagram for Yilida indoor fan 101-000-453	5119	22-09-23	R.K.
E	Removed saddle and added EMC gland; Added PSD 2 block	5034	19-07-22	S.G.
E	TB7 Removed; Added earth studs; Rewired earth wires	5034	19-07-22	S.G.
D	WVR1 Contact relabelled		11-12-20	Y.Z.

